



Chicago ASPENews



Chicago Regional Chapter of the American Society of Plumbing Engineers
Vol. 53, No. 4
December 2021

Chicago Chapter General Meeting Thursday, December 9, 2021

La Villa Restaurant

3638 N. Pulaski Road
Chicago, IL 60641

**BOOSTER NIGHT
HOLIDAY PARTY &**



AGENDA

5:30pm - 9:00 pm:

Open Bar: Call Liquor, Beer & Wine

Hats off to all the **outstanding Affiliates**, Chicago ASPE, and our members!

Program: No technical program tonight, just a great night of socializing with good friends, and a chance to try out your skills on a select number of games!

6:30pm Dinner, (\$45 for ASPE Members \$50 Non-Members). **RSVPs must be received by 6:00 PM on Monday, December 6th**
(RSVPs received after this time will be charged a \$5 late fee).

Please RSVP on the Chicago.aspe.org website in lieu of calling or emailing, thank you for your cooperation!

MENU

Appetizers:

- Sausage Skewers
- Meatballs
- Focaccia Bread
- Shrimp Cocktail

First Course:

- Salad w/ Ranch, French, and House Dressings

Entrées:

- Pepper Steak
- Baked Chicken
- Bowtie Pasta w/ Marinara
- Mashed Potatoes
- Grilled Vegetables

Drinks:

- Coffee, tea, soda & open bar



Chicago ASPENews



2021-2022 ASPE Chicago Meeting Schedule

Date	Technical Presentation & Manufacturer Spotlight	CEU	Location
Friday, September 10, 2021	Stephen Triphahn Memorial ASPE Chicago Golf Outing	N/A	Hilldale Golf Club 1625 Ardwick Drive Hoffman Estates
Thursday, September 16, 2021	Presentation Topic: Hot Water Heat Pumps: An Emerging Technology for Today's Energy Trends Speaker: Chris Wisinski Mfr Spotlight: Bornquist - New Technologies Speaker: Chris Wisinski	0.1	Westwood Tavern & Tap 1385 N. Meacham Rd. Schaumburg, IL
September 22-26, 2021	ASPE Technical Symposium San Diego, CA		San Diego, CA
Thursday, October 21, 2021	Presentation Topic: Flue Gas Vent Materials & Standards Speaker: Bill Summers Mfr Spotlight: Centrotherm Speaker: Josh Stelter of Lyall, Thresher & Assoc	0.1	Venuti's 2251 W. Lake Street Addison, IL
Thursday, November 18, 2021	Presentation: Chicago Plumbing Code Amendments Speaker: Grant Ullrich - Chicago Managing Deputy Commissioner Mfr Spotlight: Herkowski Stickler & Associates Speaker: Phil Traynor	0.1	The Berghoff 17 W. Adams Street Chicago, IL
Thursday, December 09, 2021	Booster Night Holiday Party & Casino Night	N/A	La Villa Restaurant 3638 N Pulaski Rd Chicago, IL
Thursday, January 20, 2022	Presentation: Hot Water Distribution Temperatures, Legionella Control & the Need for Enhanced Scald Prevention Tactics Speaker: James Dipping - ESD Mfr Spotlight: NIBCO Speaker: Aaron Kilburg	0.1	Noon Whistle Brewing Co (NEW VENUE!) 800 E Roosevelt Road Lombard, IL 60148
Thursday, February 17, 2022	Presentation: Everything Engineers Should Know about Hot Water Return Design (Part 1: Theory) Speaker: Christoph Lohr - IAPMO Mfr Spotlight: TBD Speaker: TBD	0.1	Westwood Tavern & Tap 1385 N. Meacham Rd. Schaumburg, IL
Thursday, March 18, 2022	ASPE Chicago Product Show and Technical Seminars Co-located with ILPHCC Drury Lane Conference Center, Oakbrook Terrace, Illinois	0.4	Drury Lane Conference Center, Oakbrook Terrace, Illinois
Thursday, April 21, 2022	Presentation: Performance Roof Drain Design Speaker: Craig Froeter Mfr Spotlight: TBD Speaker: TBD	0.1	Church Street Brewing Co (NEW VENUE!) 1480 Industrial Drive, Unit C Itasca, IL 60143
Thursday, May 19, 2022	Presentation Topic: Plumbing Installation How To's Speaker: Jim Majerowicz Mfr Spotlight: TBD Speaker: TBD	0.1	Plumbers Local 130 Training Center 1400 W Washington Blvd Chicago, IL 60607
Friday, June 17, 2022	Stephen Triphahn Memorial ASPE Chicago Golf Outing	N/A	Hilldale Golf Club 1625 Ardwick Drive Hoffman Estates

If you would like to present any of these topics or become a meeting sponsor, please contact Chris Rohan at aspe.chicago.vptech@gmail.com.

Feeling Lucky?? Then you should join us for:

The Chicago ASPE Booster Night Holiday Party

and



Thursday, December 9th | 5:30 to 9:00 p.m.

La Villa Restaurant
3632 N. Pulaski Rd.
Chicago, IL

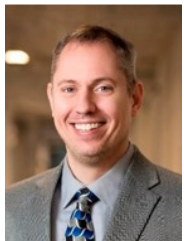
The 2021 Chicago ASPE Booster & Casino Night is just around the corner. Don't miss out on the fun with gaming for amazing prizes at the blackjack, craps, roulette tables and more!

Stay tuned for more information!!

Attention Affiliates: Sponsorship opportunities are still available!

Please contact Darren Rich for more information: Ph# 847.421.0053

aspe.chicago.vpaff@gmail.com



PRESIDENT'S MESSAGE

Greetings ASPE Chicago Chapter Members: I want to thank everyone who made it out to our November Meeting at The Berghoff in Chicago. We nearly packed the room. We had close to 60 people show up, including some members of the Plumber's Local130.

A huge thank you to Grant Ullrich the Managing Deputy Commissioner for the City of Chicago, for his presentation on the updates to the Chicago Plumbing Code, Phil Traynor from HSA for the Manufacturer Spotlight, introducing us to the new HSA team after the merger with Deery-Pardue & an extra thanks to HSA and Viega who sponsored the Cocktail Hour (and didn't close out the tab, so everyone drank for free the whole night).

Our next chapter meeting is our largest attended monthly meeting, our annual Booster Night at La Villa. We will be doing another casino night. Bring your luck to the games, whether you prefer craps, blackjack, roulette, or the money wheel there are opportunities for everyone to play and win. And we will be providing \$2,000 worth of prizes so come out and place your bets. Collect the tickets you win and put them in the prize bowl you want the most. Check out the food menu on the front page of this newsletter. Please RSVP early so we can be sure we account for everyone.

The Season for Giving Back:

Now that the weather is getting colder, we are quickly closing in on our holiday party. With that in mind our chapter annually has been very generous with the Toy-4-Tots collection. Please keep in mind that with the current shipping delays that toys will be especially hard to come by this year, so please shop early.

With all the Covid shutdowns a much larger number of families are in desperate need, please consider increasing your donations this season. Bring an unwrapped toy or a multitude of toys to Booster Night Holiday Party on Dec 9 where we will have representatives from the Marine Corps present to accept our donations.



An Introduction to our Leaders for the ASPE Chicago Product Show

Brian Yelton and Eric Cottrell from Inland Sales have graciously volunteered to lead the planning for our joint Product Show with PHCC. Brian is also on the committee for PHCC so his input will aide both teams. We are planning on joining PHCC in March for a joint EXPO show. If you are a manufacture who is not associated with the PHCC show, please reach out to us and we can work out what needs to be set up. We will be reaching out to manufactures and representatives in the near future looking for their support to the ASPE Chicago Chapter. Please stay tuned for more information.

Brian Yelton - brian.yelton@inlandsalesgroup.com

Eric Cottrell - eric.cottrell@inlandsalesgroup.com

Scott Jagodzinski - ASPE.Chicago.President@gmail.com

An extra incentive to attend meetings (Note: Booster Night will not have a drawing – 2 winners in Jan)

We have a very large group of members in the Chicago chapter. 2nd only to NYC. But we do not have enough physical representation at our meetings. We would love to see more engineers come and check it out. Not only do you get the opportunity to network with your fellow engineers and meet your local representation, but there is also always a great speaker looking to provide you with some information on a timely subject matter. For anyone who needs CEUs we have those too. Plus the food is quite delicious. Now we are adding even more to the mix. Every engineer who RSVPs on time and attends the meeting (i.e. Monday before the meeting), will be entered in for a door prize of your choosing. Winner will be announced that night and highlighted in the following newsletter. Considering we have 15-20 engineers at a typical meeting you have pretty good odds to win.

Sponsored generously by Mid-Continent Marketing & Inland Sales. (See the enclosed Flyer in this newsletter for prizes)

Continued on Page 6

CHAPTER OFFICERS

PRESIDENT

Scott Jagodzinski, CPD, GPD
Virtual Energy Solutions
847.513.4809
aspe.chicago.president@gmail.com

VICE PRESIDENT TECHNICAL

Chris Rohan, CPD
The Engineering Studio, Inc.
847.795.8810
aspe.chicago.vptech@gmail.com

VICE PRESIDENT LEGISLATIVE

Chris Winnie
SmithGroup
847.400.6017
aspe.chicago.vpl@gmail.com

VICE PRESIDENT MEMBERSHIP

Justin Wroblewski
AMS Mechanical
630.969.7000
aspe.chicago.vpm@gmail.com

VICE PRESIDENT AFFILIATE

Darren Rich
Thermal Applications Group
847.421.0053
aspe.chicago.vpaff@gmail.com

TREASURER

Jason Romano
Mid-Continent Marketing
630.973.0056
aspe.chicago.treasurer@gmail.com

ADMINISTRATIVE SECRETARY

Phil Traynor
Herkowski Stickler & Assoc. (HSA)
630.294.3485
aspe.chicago.admsec@gmail.com

CORRESPONDING SECRETARY/ SOCIAL MEDIA TECHNICAL DIRECTOR

Eric Cottrell
Inland Sales Group
630.407.7042
aspe.chicago.cspsec@gmail.com

PRODUCT SHOW CHAIRMAN

TBD
aspe.chicago.pschairman@gmail.com

ASPE CHICAGO JOBS PROGRAM COORDINATOR

aspe.chicago.careers@gmail.com

HISTORIAN

Joe Ficek
Grumman Butkus
847.316.9222
jficek@grummanbutkus.com

NEWSLETTER EDITOR, WEBMASTER

Jeff Gallagher, P.E.
Viega, LLC
224.407.1813
aspe.chicago.nle@gmail.com

AYP LIAISON

Robert Thomm
Evergreen Sales
608.339.1185
aspe.chicago.ayp@gmail.com

WOA LIAISON

Natalia Dankanich
Grumman Butkus
ndankanich@grummanbutkus.com

AMBASSADOR

Justin Wroblewski
AMS Mechanical
aspe.chicago.ambassador@gmail.com

SOCIAL MEDIA COORDINATOR

Eric Cottrell
Inland Sales Group, Inc.
aspe.chicago.cspsec@gmail.com

WEBSITE

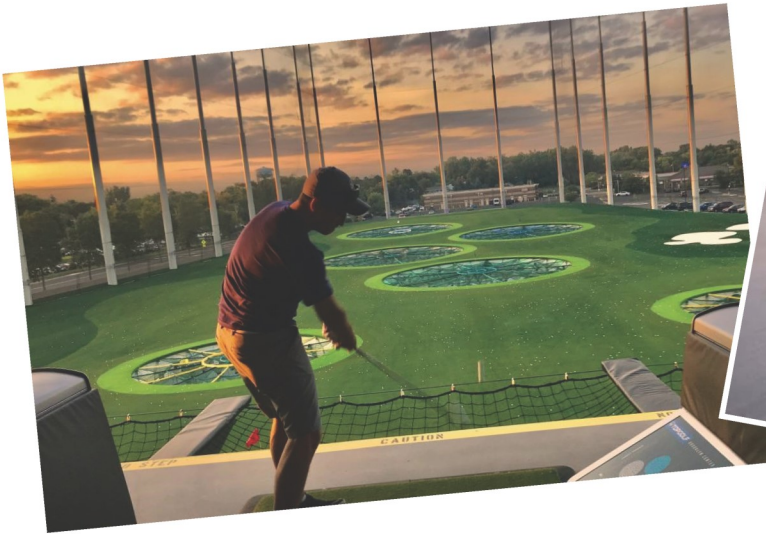
<http://chicago.aspe.org/>

FOLLOW US ON:



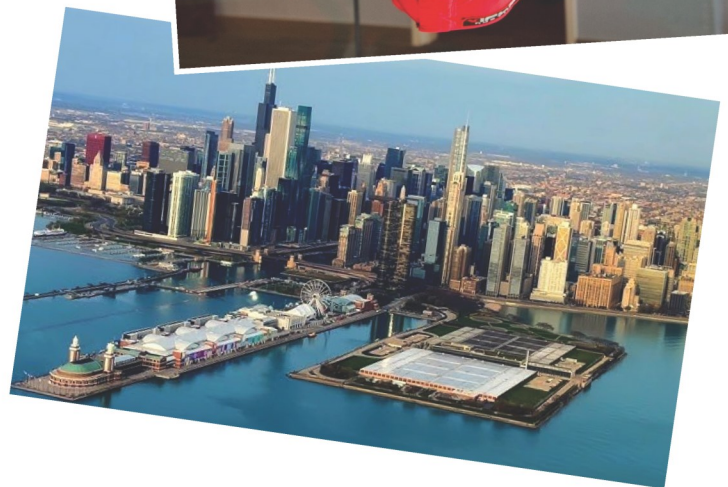


Chapter Meeting DOOR PRIZE GIVEAWAY!



Your choice of prize from the following:

- iFly Chicago Gift Card (\$150)
- High Speed Go-Kart Racing Gift Card (\$150)
- Top Golf Gift Card (\$150)
- Chicago Aero Tour (\$147)
- TV Sound Bar (\$150)
- Bluetooth Speaker (\$150)
- Bluetooth Headphones (\$150)



Eligibility:

- Must be an ASPE Member
- Must be an Engineer/Contractor
- Must RSVP by 6pm Monday before Chapter Meeting

Sponsored by Mid-Continent Marketing & Inland Sales

PRESIDENT'S MESSAGE, CONTINUED...

On top of that we are also offering one member a chance to earn a free year of membership in ASPE. The Chicago Chapter will cover the cost of your membership fee. (\$190) To win the free membership, any Active Chicago Chapter member, who is also an engineer or designer, must attend at least 4 meetings in the Chicago ASPE 2021-2022 season to be eligible. You must RSVP on time and be in attendance. Winner will be announced at the Steve Triphahn Memorial Golf Outing in June.

Do you want to be Green Certified?

ASPE Green Plumbing Design, or GPD, is now available on demand. The new program is a self-paced online certification where you can earn your certificate at your own pace. Follow along with 7 multi-part modules designed to refine your skills in sustainable design. This includes Water Conservation, Standards & Regulations, Solar Water Heating, Drain Water Recovery, Water Treatment, Rainwater Harvesting, Condensate Collection, And More!

You must have your CPD or PE to be eligible.

Register online @ ASPE Education or follow this link: <https://education.aspe.org/products/green-plumbing-design>

Compassion Waiver:

Did you know that if you are struggling or have lost your job, you can get help from ASPE to maintain your ASPE Membership? ASPE offers members the ability to request a compassion waiver to keep your membership active while you are unable to pay. Go to this link and send me an email to request a letter. The waiver is good for 3 months with a maximum of 4 renewals. <https://www.aspe.org/membership-global-community/membership/members-only/application-for-compassion-waiver-of-society-dues/> Please note that ASPE is also extending expiration of memberships 90 days.

Thanks!

Scott Jagodzinski, GPD, CPD

Chicago Chapter President

aspe-chicago-president@gmail.com



VICE PRESIDENT, TECHNICAL: TECHNICALLY SPEAKING

Greetings ASPE Chicago Chapter Members! I hope everyone had a safe and Happy Thanksgiving! It is hard to believe we are already into December and 2021 is coming to an end. I am looking forward to see what 2022 brings, which I know for our Chapter will include a few new venue locations and a product show we have not been able to put on since 2018.

Thank you to everyone that came out to The Berghoff last month! We had a great turnout with 54 in attendance. I saw a lot of new faces, including a good amount of representation from Local 130. Please remember to let us know if you need to cancel your RSVP, as we had 6 no-shows last month. Thank you to all those that gave us advance notice!

I want to apologize for the unfortunate microphone problems we had since that was brought up often in the meeting evaluations. The venue microphone was not cooperating at times and unfortunately, the sound acoustics in the room were not conducive to attempting to go without.

A HUGE thank you to HSA and Viega for opting to sponsor the bar for the entire evening! Thank you to Phil Traynor and HSA for participating in the Manufacturer Spotlight and informing us of the big changes taking place at HSA although slightly abbreviated due to some technical issues. Finally, a big thank you to Grant Ullrich from the Chicago Department of Buildings for his presentation on the many changes to the Chicago Plumbing Code. Below are some key takeaways from the presentation:

- PVC is permitted in Residential or Multi-Use buildings that do not exceed 60 feet in height.
- In Multi-Use buildings, the use of PVC is strictly limited to the residential portions of the building, which can include parking garages dedicated to the residents. Please follow this link for a detailed code interpretation on the use of PVC in Multi-Use buildings <https://www.chicago.gov/content/dam/city/depts/bldgs/general/interpretations/P7-2021-001.pdf>
- Water Hammer Arrestors certified to ASSE 1010 will be required in lieu of air chambers.
- Better aligned requirements for protection of sewers from grease with national standards.
- The amendments are optional until March 1, 2022, but if you use the amendments, all provisions of the amendments must be followed, you cannot pick and choose.

Continued on Page 8



WILLOUGHBY
COUNT ON US.



SCAN ME!

LRBHL-2220

NEW

- Contoured single-user AquaSurf® lavatory basin
- Solid surface: resistant to stains, impacts, and burns
 - Easily cleaned with everyday cleansers
 - Nine (9) available finish colors
- Pre-assembled stainless steel mounting pedestal
- Ready for new construction projects or retrofitting
- Compliant with ADA requirements for accessibility



**LIGATURE-RESISTANT SOLID SURFACE, BEHAVIORAL HEALTHCARE LAVATORY
(FOR DECK MOUNTED FAUCET)**

BEHAVIORAL HEALTHCARE

Designed to be aesthetically pleasing,
exceeding durable, while
minimizing ligature points

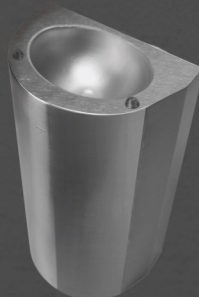
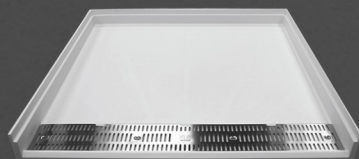
Heavy gauge, type 304 stainless steel
all-welded construction

Exposed stainless surfaces polished to satin finish

Aquasurf® cast polymer resin, a stain-, impact-,
and burn-resistant solid surface material

LAVATORIES
DRINKING FOUNTAINS
FAUCETS
SHOWERS
SHOWER BASES & PANELS
TOILETS
URINALS
DRAINS

See expansive offerings at
WILLOUGHBY.COM



WWW.INLANDSALESGROUP.COM | INFO@INLANDSALESGROUP.COM

VICE PRESIDENT, TECHNICAL: TECHNICALLY SPEAKING, CONTINUED...

If you are interested in viewing the slides from the presentation, please follow this link <https://drive.google.com/file/d/1hSuwt1x1zJgmnLdVdNFabYkLhLG9gPBh/view?usp=sharing>

If you are interested in serving on a technical committee for the future adoption of International Plumbing, Mechanical, or Fuel Gas Codes, please send an email to DOBCommissioner@CityofChicago.org

December Chapter Meeting Info:

Location: **La Villa Restaurant** – Please RSVP early and no later than 6:00 PM on Monday, December 6th.

There is no presentation this month, just a night of fun and socialization with the chance to win a lot of great prizes. Please be sure to thank all our wonderful sponsors that make this evening possible.

La Villa COVID Rules and Requirements:

The venue has indicated that per current state mandates, masks **are required** to be worn **in all indoor public areas** of the restaurant, including the bar that many frequent pre and post meeting. Masks **are not required** to be worn **in the private meeting space**. Although masks are optional in our private meeting space, we do encourage them to be worn when not eating and drinking. Any additional precautions will be the responsibility of each individual. Please note that ALL venue staff will be wearing masks.

If you have an idea for a technical presentation you want to see, or you have a great technical session you want to present, please reach out to me and we can look to get you or your topic on the list for next season. Slots will fill up quickly. We are also looking to lock in Manufacturer Spotlights and Cocktail Hour sponsors as well for some of remaining meetings this year.

Have a Safe and Happy Holiday Season and New Year!

Chris Rohan, CPD

Chicago Chapter Vice President, Technical
aspe.chicago.vptech@gmail.com

VICE PRESIDENT, LEGISLATIVE



Hello Chicago Chapter Members!

I hope you all are enjoying the holiday season. I sure am, it'll be my second daughter's first Christmas and the older kid is finally enjoying the thrill of the season. I expect some gifts to be opened prematurely, but hopefully I can keep the tree safe.

As it relates to building codes, it seems there isn't much to report. The Legislative update for the newsletter will be mostly about Subsoil Drainage system design. I hope to get some good conversation on what you all are seeing in your designs and the potential call backs after construction is completed. All of these are great lessons to share with people entering the industry that are tasked with responsibilities they've never had before. As the expression goes, "Sharing is Caring" and I care about all of you, enjoy!

Subsoil Drainage Design:

It's one of the most passive systems within a building that often falls into responsibility of the Plumbing Engineer. This system goes by many names, and it's confusing until you catch on with everyone's lingo. In the International Building Code it's called a "foundation drain" and others frequently call it "drain tile". The system is poorly understood and often designed based off of "rules of thumb". It's our job as Plumbing Engineers to see that any storm or ground water sees its way out of the building.

Luckily we aren't all on our own, as a part of any new construction, a soils analysis should be performed by a Geotechnical Engineer. This same report would be of great interest to both the Architect and Structural Engineer, so it shouldn't be added cost solely from a Plumbing Engineer's request.

Continued on Page 9

INTELLIGENT PUMP CONTROL OPERATION



PATENT NO.: 6,322,325 PATENT NO.: 6,565,325
PATENT PENDING



The Ion IntelliPump, an advanced float-based pump controller can be used with both traditional style switches or with Ion sensors.

- Multiple mode types including:
Duplex Mechanical Alternator | Duplex | Triplex | Quadraplex
- Mountable Nema 4x display
- Adjustable Pump On/Off and Emergency Pump Run Delay
- Pump Up or Pump Down Functions
- External Silence, Reset and Alternation Control
- Dry contacts for Seal Fails, Pump Fails, Float/Ion Sensor Fail, Common Alarm, and High & Low Alarms
- Works with both traditional style switches or Ion sensors
 - Ion sensors allow for out of sequence detection in both up and down directions. In addition, Ion sensors use strain gauge technology to overcome reliability and operation issues typical of mechanical floats



815-886-9200
Metropolitanind.com

VICE PRESIDENT, LEGISLATIVE, CONTINUED...

If you don't receive the soils report from the Geotechnical Engineer, formally request from the project team. Within the soils report will be descriptions of the soil that was encountered, the depth of the water table, a recommendation (or lack thereof) for a Subsoil Drainage (SSD) system and maybe even some guidelines on size of the SSD pipe, spacing beneath the building and the anticipated water flow from the site.

Armed with the soils report, you won't be getting much more information (at least in my experience) so you would be able to layout the system and size the pump.

You might be asking, "Well what if the report doesn't tell me the anticipated flow from the site?"

This is where it gets tricky and having a few rules of thumbs will be in order. I offer here some guidance based on my experience with two methods I've used to calculate the size of the sump pump.

Method #1 – Area Method:

This method involves looking at two things: The footprint of the building and the soils report. The footprint of the building should be simple enough to calculate if you have drawings to scale, or can measure in your Autodesk software. The soils report will tell us how much of the building needs to be provided with a subsoil drainage system and also will list if the soils contain clay or sand. My rule of thumb is to size the SSD pumps at a ratio of 1 GPM per 100 SF for clay soils and a ratio of 2 GPM per 100 SF for sandy soils. If your soil report lists both, then you could either assume the larger ratio, or you could set your ratio somewhere in the middle. As this system protects the building, it is better to err on the side of caution and put in larger pits or pumps if you're unsure. Reach out to the project team, the owner, more experienced coworkers or your preferred mentor as needed. This is a liability item, so do your due diligence and be transparent about any assumptions.

Method #2 – Linear Pipe Method:

I use this method when the soil report recommends only the perimeter of a building to be provided with a SSD system. When I was introduced to this Method, the calculated SSD flow from Method #1 was very close to the calculated flow using this Method. This helped to validate this Method as viable, however the spacing of the SSD was 30'-0" on center. When I looked at employing this Method on other projects with 20'-0" on center SSD spacing, it typically led to drastically larger pumps when compared to Method #1. The rule of thumb for this Method is to assume ground water capture is based on the pipe size, a 4" perforated pipe with the geotextile wrap (to keep soil out of the pipe) adds 0.25 GPM per linear foot of installed pipe while a 6" pipe adds 0.5 GPM per linear foot.

Designing the Subsoil Drainage System cont'd:

The capacity required for the pump system should be known after using one of these two methods, at this point you will need to call/email a rep to discuss how many pumps want to split the load and how much redundancy is expected. Each of these are great things to talk through with the Client for transparency. I start with n+1 redundancy to have 100% of my design flows capable if one pump breaks-down.

Once the pump system is selected, I usually quality control review my underground system as I schedule the pump. It's good to confirm we are following the Geotechnical Engineer's recommendations in addition to any requests that may have come from Owner, Architect or Structural Engineer. Then I look at the SSD system capacity and compare the flow rate (GPM) to the number of "main" branches that connect into the sump pit. With help from the Manning's Formula, we can verify if the main branches can convey the amount of water we are expecting the sump pumps to be able to handle.

Manning's Formula?

The Gauckler-Manning formula states:

$$V = \frac{k}{n} R_h^{2/3} S^{1/2}$$

It's a formula used to determine the maximum flow rate a pipe can convey. If you've never heard of it or used it, I recommend you look it up or send me an email and I can help get you started.

Continued on Page 11



REPCO ASSOCIATES

Representing Manufacturers of Quality

Plumbing Products Since 1969



Thank you
for your
support!



1775 West Armitage Court • Addison, IL • 60101

630-932-9900 Phone • 630-932-9911 Fax

For more information please contact info@repcoassociates.com or visit our website.

www.repcoassociates.com

VICE PRESIDENT, LEGISLATIVE, CONTINUED...

Knowing the Manning's Formula and calculating for full-pipe flow, we see that a 4" pipe can carry ~75 GPM, a 6" pipe can carry ~225 GPM and an 8" pipe can carry ~500 GPM. I was assuming a surface friction of 0.015 and a 1% slope, however your system might be different.

If a single 4" SSD pipe terminates into the sump pit but the calculated SSD flow is greater than 75 GPM, then we know the ground water would never be captured at the rate we have calculated. Upsizing of the pipe terminating into the sump pit would be required, or you could increase the number of pipes terminating into the sump pit. I usually specify the terminating pipe(s) to be hard pipe while the network of SSD pipe remains perforated and wrapped with the geo-textile fabric.

What do you use when you size the SSD system?

If you have questions on any of this, feel free to reach out to me at aspe.chicago.vpl@gmail.com and I can give a few pointers/clarifications.

International Code Council – 2024 Codes :

The process of updating the International Building Codes for the 2024 edition, is still underway. There have not been any recent updates from the Committee Action Hearings in Spring, I will be continually monitoring this.

City of Chicago Updates:

To stay up to date on the happenings of the City Council and Committees, you can find the regularly updated calendar here <https://chicago.legistar.com/Calendar.aspx>

State of Illinois Updates:

There has been no action related to the State of Illinois Plumbing Code. Additionally, there are no scheduled Illinois Plumbing Code Advisory Council Meetings. If that changes, I will let you know. To keep up on scheduled IDPH Events, the regularly updated calendar can be found here: <http://www.dph.illinois.gov/event>

Please reach out to me if you have any code questions, code updates, ideas for topics of discussion, or you are looking for any interpretations and I will try and include pertinent information in future newsletters.

Stay safe and healthy!

Chris Winnie

Chicago Chapter Vice President, Legislative
ASPE.Chicago.VPL@gmail.com



PLUMBING
TECHNICAL SERVICES

VALUE ENGINEERING: QUALITY NEVER GOES OUT OF STYLE

**Learn more about the benefits of
using a cast iron plumbing system.**



Don't Value-Engineer the Quality Out of Your System

Don't value-engineer the performance out of your next DWV plumbing project. Consider the true cost of installation when comparing piping solutions.

Reach out to your local Tech Services rep to schedule a time to go over the ASPE approved CEU Value-Engineering Considerations presentation.

McWanePlumbingTechServices.com/contact



VICE PRESIDENT, MEMBERSHIP / AMBASSADOR

Greeting Members,

ASPE Chicago, is offering one member a chance to earn a free year of membership (\$190). To win the free membership, any active Chicago Chapter member, who is also an engineer or designer, must attend at least 4 meetings to be eligible. You must RSVP on time and be in attendance at the meeting. We will announce the winner at the Steve Triphahn Memorial Golf Outing in June.

Our current membership numbers are steady. We currently have 250 members in the Chicago chapter. If you know of a member that is currently struggling paying due ASPE does offer a compassion wavier which can help a member out. Please reach out to me if this is a program that you would like to utilize.

If you are a manufacturer rep that is starting to visit engineering firms again, please reach out to me if you know of firms that have engineers that are not signed up with ASPE so I can reach out to them.

*******PLEASE READ THIS IF YOU WANT ENGINEERS TO BE ABLE TO FIND YOU AND YOUR PRODUCTS QUICKLY AND EASILY!!!!*******

ASPE Chicago has been gathering up VCF contact cards for their engineers to use. This file is generated from (and usable in) Microsoft Outlook. The intent is for our **ASPE Chicago Engineer members to have quick access to search for ASPE Affiliate members AND THE PRODUCTS/MANUFACTURERS THEY REPRESENT**. This is located on the members only portion of the website.

Please see the attached instructions on what our Chapter is looking for. If you would like to have your contact information included for our members, please try and create a VCF file and send it to me.

If you have already provided this VCF card to me THEN PLEASE VERIFY YOU HAVE DONE IT RIGHT by checking our Affiliate Membership Directory here (password is "activeASPEmember!"): <https://chicago.aspe.org/aspe-chicago-affiliate-directory.html>

Please do not hesitate to contact me if you have any questions.

I am looking forward to seeing you all at the tables this month. Please register early if you plan on attending.

Stay Healthy,

Justin Wroblewski, CPDT

Chicago Chapter Vice President, Membership / Ambassador

ASPE.Chicago.VPM@gmail.com / aspe.chicago.ambassador@gmail.com / Jwroblewski@ams-pmt.com

The screenshot shows a Microsoft Outlook contact card for Justin Wroblewski. The card includes fields for Full Name, Company, Job title, File as, Internet, E-mail, Display as, Web page address, IM address, Phone numbers, and Addresses. A red arrow points to the photo field with the text "Suggest including a photo". Another red arrow points to the Notes field with the text "Please populate the notes section of your MS Outlook contact to include the following:". A third red arrow points to the Products field with the text "If you carry multiple manufacturers, please add them to the notes section". A fourth red arrow points to the Addresses field with the text "Add all the contact info you like. Maybe include a link to your companies line card if posted online?". A fifth red arrow points to the Products list with the text "The varies products your company carries. Please utilize the list provided and delete what is not applicable".

Example:
Manufactures Rep
Product Lines:
Products:
Accessories
Actuators
Air Valves & Systems
Automatic Valves
Carriers
Compressors
Computer Software & Cad Systems
Control, Automatic & Flush Valves
Design Consulting
Disaster Preparedness/Prevention/Recovery
Drains/Drain Systems
Drinking Fountains/Water
Coolers
Faucets
Faucets - Sensor Operated
Fire Protection Equipment
Fire Pumps, Engines, Controllers, Accessories
Fixtures - Stainless Steel
Fixtures - Tubs/Toilets/Basins
Grease Oil & Solids Interceptors
Hvac
Industry Association
Media/Association
Pipe Couplings, Fittings & Systems
Piped Gas Systems



VICE PRESIDENT, AFFILIATE

Greetings ASPE Members and Happy Holidays to all!

December is upon us and we are excited for Booster / Casino Night coming up on Thursday the 9th. Great Friends, Great Food, Great Fun, and Great Prizes.....\$2,000 worth of prizes to be exact! Hopefully you will come join us and bring new members!

Don't Forget to Bring a toy or 2 for our annual Toys for Tots collection..... More and more families are in need and we usually do an impressive job! Lets keep that tradition up!

Its not too late to Sponsor this Great Event!

We have Bar and General Sponsorships still available.

We need the help of all our Affiliates, Reps and Manufacturers!

A BIG Thank you to those who have supported this event already

General Sponsor—\$150.00

Your company will be listed on a sign thanking all of our sponsors and listed in the ASPE January Newsletter. There are an unlimited number of General Sponsorships Available.

Bar Sponsor—\$400.00

This sponsorship includes everything in the General Sponsorship as well as a sign specifically thanking your company hanging by the bar. At this point, we are not limiting the number of Bar Sponsorships! Drink All you want (But be careful!!!!)

Please let me know as soon as possible if you would be interested in supporting this event at any level.

Reps!!!! Please don't only consider doing a sponsorship for your company, but please reach out to your Manufacturers and see if they would also like to take advantage of a sponsorship and thank the engineers that are so important to their success!

Don't forget to encourage new ASPE memberships when you do Lunch and Learns at engineering firms.

Let's continue to grow what is already the greatest ASPE Chapter in the Country!!

Please do not hesitate to reach out to me with any thoughts and ideas you would like to see brought up in front of the ASPE Board. Your feedback and input is always welcome!

See everyone soon!

Darren Rich

Chicago Chapter Vice President, Affiliate

P# 847.421.0053 aspe.chicago.vpaff@gmail.com



ADMINISTRATIVE SECRETARY

Greetings Members,

Thank you to all of those who attended our November meeting. It was a great night with a very informative presentation on the Chicago Code updates by Grant Ullrich. If you couldn't make it, I believe we will be providing the PDF version of the presentation for our members so they can review. I hope the holidays are a great season for all and we have a time to relax!

Sincerely,

Phil Traynor, HSA

Chicago Chapter Administrative Secretary

aspe.chicago.admsec@gmail.com

ATTENTION MANUFACTURERS AND MANUFACTURER REPS!

**ADVERTISEMENT SPACE IS NOW AVAILABLE IN THE
CHICAGO ASPE MONTHLY NEWSLETTERS!**

NEW LOWER AD SPACE PRICING IS AS FOLLOWS:

Full PAGE AD.....\$200

1/2 PAGE AD.....\$125

1/4 PAGE AD.....\$75

**DON'T MISS OUT ON THIS GREAT OPPORTUNITY TO REACH OUT TO THE CHI-
CAGO ASPE COMMUNITY CONSISTING OF ALMOST 700 VIEWERS—ONE OF
THE LARGEST MARKETS IN THE INDUSTRY!**

**AD SPACE IS VERY LIMITED AND IS FIRST COME, FIRST SERVED SO
DON'T DELAY!!**

Please contact Darren Rich for more information: P# 847.875.8659

aspe.chicago.vpaff@gmail.com

ORDER YOUR ASPE CHICAGO BADGE!

Are you tired of being the only one at the meeting without a fancy ASPE Chicago name badge? Do you want to update your badge so it has your new name or company?

The Chicago Chapter is proud to offer once again our badge promotion!



Costs:

Badges: \$15
Shipping (optional): \$5

Make checks payable to "ASPE Chicago Chapter" and either drop off your check at one of the Chapter Meetings or mail it to:

**ASPE Chicago Chapter
c/o Mark Mannarelli/Syska Hennessy Group
330 N. Wabash Ave, Ste. 1505
Chicago, IL 60611**

Name and Company will be printed on the badge as listed below - if you leave blanks or list other names, they WILL be printed on the badge. If you would like your badge mailed to you, please include this information. You can mail or email this form. Badge order will not be processed until payment is received. Send emails to mannarelligm@gmail.com

Please indicate your preferences:

Name: _____
Company: _____

Fastener style (please circle one):

- Clip
- Magnet

This promotion is for ASPE Chicago members only!

CORRESPONDING SECRETARY: INDUSTRY NEWS

Back at it AGAIN!! Love this quick turnaround from my personal favorite spot, The Berghoff to our Booster Night! I hope you all had a great Thanksgiving and I look forward to seeing you all at Casino Night! I will be wearing an Ugly Christmas Sweater...maybe some of you may want to join in on that!

I would also like to mention that ASPE CHICAGO has now joined Social Media!! please feel free to send over pictures you have of some jobs you are working on, and pictures from the golf outing or other ASPE events you may have at ASPE.chicago.social@gmail.com

Follow us on:    

Please see below a number of different opportunities around our community that would benefit those of you who chose to invest your time.

American Society of Sanitary Engineering (ASSE)

<https://www.asse-plumbing.org/asse/midyear>

2022 ASSE International Mid-Year Meeting
April 5th-7th at the Chicago Plumbers Local 130 Campus
1400 W. Washington Blvd, Chicago, IL 60607

American Institute of Architects (AIA)

Eastern Illinois Chapter

2021 Annual Meeting & Design Awards

Date: December 12th

Time: 5pm - 9pm

Location: CD&ME 23320 S. LaGrange Rd, Frankfort, IL 60423

INFO: <https://aiaaic.org/meetinginfo.php?id=71&ts=1638244209>

Illinois Chapter of ASHRAE

<https://illinoisashrae.org/>

Chapter Meeting

Currently only Chapter membership meetings

Illinois Association of Plumbing-Heating-Cooling Contractors (ILPHCC)

Contractors can register for CEUs here

<https://www.ilphcc.com/>

National Fire Protection Association (NFPA)

Event List: <https://www.nfpa.org/Training-and-Events/Resources/Events-calendar>

Society of Fire Protection Engineers (SFPE)

No Upcoming Events At This Time [http://](http://www.chicagosfpe.org/join-us/events/)

www.chicagosfpe.org/join-us/events/

Illinois Rural Water Association (IRWA)

IRWA Annual Technical Conference

February 15-17th

Keller Convention Center

Details Coming Soon

<http://www.ilrwa.org/>

National Rural Water Association (NRWA)

No Events in Chicagoland Area

https://nrwa.org/annual_events/

American Water Works Association Illinois Section

Find all up coming events here (there are multiple events)

https://www.isawwa.org/events/event_list.asp

If there are any other organizations that you would like to stay current on, please send me an email and they will be added to the list for our next newsletter.

Eric Cottrell, Inland Sales Group

Chicago Chapter Corresponding Secretary

aspe.chicago.cspsec@gmail.com