



Chicago ASPENews



Chicago Regional Chapter of the American Society of Plumbing Engineers
Vol. 46, No. 11
June, 2015

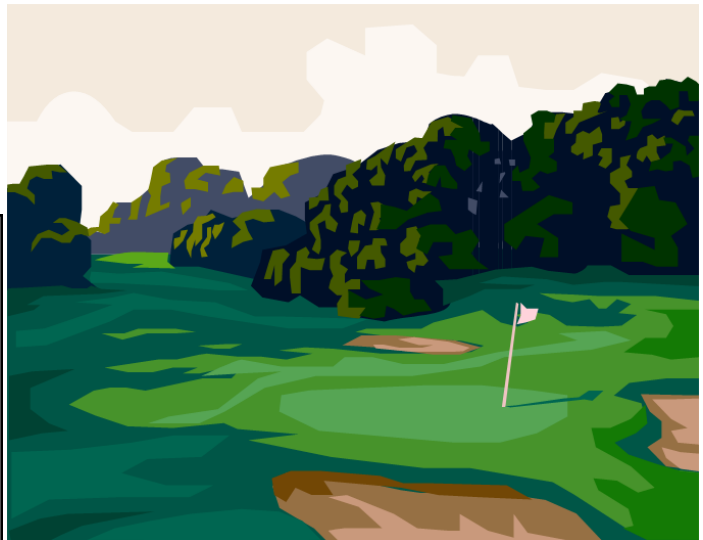


Chicago Chapter Annual Golf Outing Friday June 19, 2015



Hilldale Country Club
1625 Ardwick Drive
Hoffman Estates, IL

- *Beverages will be served on the course throughout the day.*
- *There will also be special displays and activities as you play the course.*
- *Golf Prizes and Door Prizes! Plenty to choose from!*



AGENDA

7:30am Breakfast and warm up!
8:30am Shotgun tee-off. **Don't be late!**
3:00pm Cocktails (cash bar)
4:00pm Buffet Dinner

RSVP as soon as possible to our Golf Outing Chair,
Steve Triphahn!

- ◇ Call: 224.293.6333
- ◇ Email: steve.triphahn@wtengineering.com

Special Thanks to:

Daugherty Sales for providing
breakfast!

Metropolitan Industries for
providing lunch!

Fluid Technologies Sales for
providing the beverage carts!

**All Affiliate Members and
Manufacturer's Representatives** for
their continuous support to the ASPE
Chicago Chapter!

Local chapters are not authorized to speak for the Society



PRESIDENT'S MESSAGE

The 2014-2015 Board of Directors has left the building

We held elections at our May meeting, below is your new Board of Directors. Congratulations to all! We have several returning board members, just shifting positions. We also have two rookies on the board; **Scott**

Jagodzinski, who has always helped out in the back ground, now he will be getting some well-deserved exposure. Also, **Chris Wisinski** will be heading up our education end of things, and will do a fine job.

THE NEW BOARD OF DIRECTORS!!

- **PRESIDENT – MARK MANNARELLI**
- **VICE PRESIDENT TECHNICAL – APRIL RICKETTS**
- **VICE PRESIDENT EDUCATION – CHRIS WISINSKI**
- **VICE PRESIDENT LEGISLATIVE – FRANCISCO DeHOYOS**
- **VICE PRESIDENT MEMBERSHIP - CHRIS SBARBARO**
- **VICE PRESIDENT AFFILIATE – MATT PARDUE**
- **TREASURER - SEAN ALLARD**
- **ADMINISTRATIVE SECRETARY – DAVID ERICKSON**
- **CORRESPONDING SECRETARY – SCOTT JAGODZINSKI**

Welcome the new Board Members at the Golf outing in June.

NEW, NEW, NEW seems to be the word of year for ASPE Chicago;

- 1) **We have a new newsletter editor and webmaster – Jeff Gallagher**
- 2) **We have a new AYP Director – Emily Smith**
- 3) **We have a new Product Show Chairman – Mark Nasuta**
- 4) **We have a new Product Show Venue – LaMeridian in Rolling Meadows**

June will be the Annual Golf outing, thanks to Steve Triphahn for setting this up AGAIN! I believe it is close to being full, so if you want to sponsor a foursome or a hole, I would get a hold of Steve immediately.

We also have our annual Picnic this summer, don't miss it.

Coming up this fall:

ASPE Symposium – October 1-4, 2015 in beautiful St Louis, MO

Chicago ASPE Product Show – September 16, 2015 – LaMeridian Banquets

Thank you one more time for allowing me to serve as your President. I have a lot of people to thank, and I will do that in person.

Probably the most memorable experience for my run was the way we handled and performed during the ASPE National Convention in Chicago 2014. I will say thanks to Frank Sanchez for doing a bang up job as the host chairman, and to all the volunteers who helped with the convention effort.

Finally, I have been on the board for I think **16 years** straight. I will miss it, but can't wait to get to a meeting at 5:30 instead of 4:00!

Continued on next page...

CHAPTER OFFICERS

PRESIDENT

Rick Butler
Lochinvar
224.238.8515
rbutler@lochinvar.com

VICE PRESIDENT TECHNICAL

Mark Mannarelli
Syska Hennessy Group
312.450.6308
mmannarelli@syska.com

VICE PRESIDENT EDUCATION

Matt Pardue
Deery-Pardue Associates
630.350.7575
mpardue@deery-pardue.com

VICE PRESIDENT LEGISLATIVE

J. Francisco DeHoyos
Wight & Company
312.969.7000
aspe.chicago.vpl@gmail.com

VICE PRESIDENT MEMBERSHIP

April Ricketts, PE, CPD, LEED AP
CDM Smith
312.346.5000
rickettsa@cdmsmith.com

TREASURER

Sean Allard, CPD
McGuire Engineers
312.930.2200
sallard@mepcinc.com

ADMINISTRATIVE SECRETARY

David J. Erickson Sr.
Viega LLC
312.519.5629
david.erickson@viega.us

CORRESPONDING SECRETARY

Chris Sbarbaro, PE, CPD, GPD, LEED AP
Grumman/Butkus
csbarbaro@grummanbutkus.com

PRODUCT SHOW CHAIRMAN

Mark Nasuta
Deery-Pardue
mnasuta@deery-pardue.com

ASPE CHICAGO JOBS

PROGRAM COORDINATOR
TBD

GOLF OUTING CHAIRMAN

Steve Triphahn
W-T Engineering, Inc.
224.293.6301
steve.triphahn@wtengineering.com

HISTORIAN

Donald Johnson

NEWSLETTER EDITOR,

WEBMASTER

Jeff Gallagher, P.E.
Viega, LLC
224.407.1813
Jeff.gallagher@viega.us

AYP LIAISON

Emily Smith, LEED AP BD+C
Primera Engineers, Ltd.
esmith@primeraeng.com

WEBSITE

<http://chicago.aspe.org/>

FACEBOOK

<http://www.facebook.com/iau.chicagochapter>

<https://www.facebook.com/groups/ASPE.Chicago/>

LINKEDIN

www.linkedin.com/groups?home=&qid=2393408

PRESIDENT'S MESSAGE CONTINUED...

Sad News-

We have learned with regret the death of Dennis Jurs; ASPE Chicago Member for several years. Dennis was with CLA-VAL. He passed during the Memorial Day weekend in a bicycle accident. The entire chapter offers sincere condolences to his family.

Enjoy the summer, have fun, be safe!!

Rick Butler, President

rbutler@lochinvar.com; 224 238.8515



VICE PRESIDENT, TECHNICAL: TECHNICALLY SPEAKING

Chicago Chapter,

I would like to wish everyone a warm and happy summer, once it arrives? Remember to mark your calendars for the Summer "PIG ROAST" AUGUST 8TH. All family members are invited and it's free to all!!!

GO HAWKS! THE NEXT STANLEY CUP CHAMPIONS!

I would like to thank the previous board members for a very productive year and for their continued efforts and commitment in helping make the chapter strong and still the largest in the organization. Thanks again to all the manufacturer reps and manufacturers who continually amaze me on how much they contribute to make this chapter so successful. Without your support the chapter would not be in the state it currently is in. Thanks to all the spotlight presenters for the presentations which help us pay for added costs throughout the year.

The upcoming **43rd Annual Chicago Chapter Product Show** will be held on Wednesday September 16th. In previous years the Product show was on the third Thursday of April. Please note the venue has been changed to the Meridian Banquets located at 1701 W. Algonquin Rd. in Rolling Meadows. Please look for upcoming e-blasts reminding individuals of the change of date and show times.

We are currently looking for individuals who would be interested in presenting at the show. The presentation needs to be approved by the state to earn credit for continuing education. Those interested please go to the following site for information pertaining to apply for approval:

www.ilga.gov/commission/jcar/admincode/068/068007500E05100r.html

Mark Nasuta is this years product show chairman and he can be reached at the following e-mail address for information on booth selection and any additional information needed. Additional information will be sent to manufacturers and members in upcoming reminder emails throughout the summer.

mnasuta@Deery-Pardue.com

We are looking for (4) four presentations to fill the seminar portion of the product show.

Also we will be taking spotlight presentations again for the upcoming year. Presenters can email me at mannarel-igm@gmail.com to sign up. The months of October and November have already been filled.

We will again produce the Chicago Chapter calendar that will be spear headed by Scott Jagodinski. Please look for additional information coming this summer for advertisers needed to add their look to the calendar.

The summer picnic "Pig Roast" is August 9th and we have added a few games for adults and children (egg toss, water balloon toss, ring toss, etc.) to get everyone involved. Games will be provided with prizes for the kids. This is a great way to meet members and their extended families which I think is fantastic. Please join the board and make this a successful day. Remember the event is open to all family members and friends.

Continued on next page...



VICE PRESIDENT, TECHNICAL: TECHNICALLY SPEAKING CONTINUED...

I would like to thank Rick Butler for his dedication and hard work over the years. I can say that he has been on the board for a very, very, very, very long time and has added and contributed immensely. Rick has become one individual that has earned his respect from his peers through his continued commitment to the chapter. What will Rick do with his free time, now that he has decided not to run for another position? My guess is spend time with his wife and kids and continue to get as much fishing in as possible!

Best of luck!

I would like to welcome Chris Wisinski and Scott Jagodinski (2) two new board members elected last month to this years upcoming board.

Thank you,

Mark G. Mannarelli, Vice President, Technical

mmannarelli@syska.com



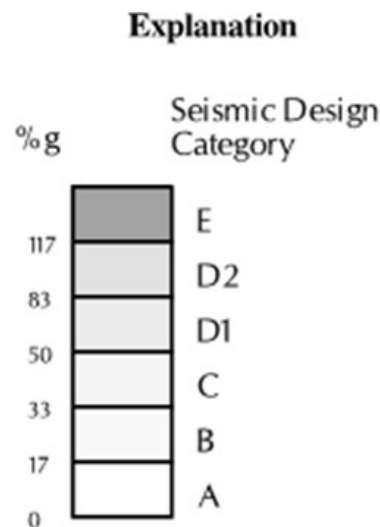
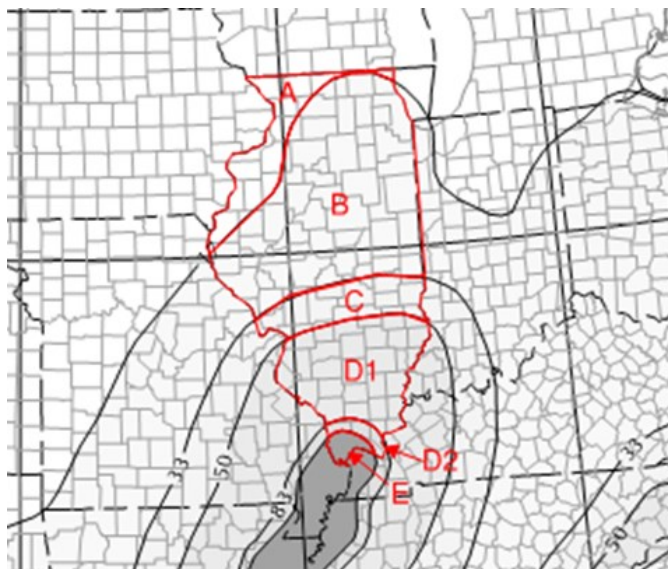
VICE PRESIDENT, LEGISLATIVE

On May 30 2015, a 3.4 magnitude earthquake took place in Mount Vernon, Illinois. March 25, 2015, a 2.9 magnitude earthquake happen in Lake in the hills (just a few miles northwest from Chicago) On January 27 2015, a 2.3 magnitude earthquake was felt in Herrin Illinois.

According to the USGS seismic tracking reports, the state of Illinois has had measurable ground movement at least once every four months.

In most of the common used plumbing and fire protection specs there is a section that indicates that the installation shall meet the minimum requirements for seismic conditions. Here is what those code lines refer to:

Seismic zone classification for the state of Illinois: (A less ground movement to E more ground movement)



Here is one of those instances were structural design goes hand in hand the mechanical piping. Besides securing the plumbing equipment, and the provision of flexible connections, we should consider paying more attention at proper bracing for seismic applications.

Here are just a couple of important codes. Nevertheless, I would recommend to read the entire ASCE Chapter 13 for a better comprehension.

Continued on next page...

VICE PRESIDENT, LEGISLATIVE CONTINUED...

ASCE Chapter 13

SEISMIC DESIGN REQUIREMENTS FOR NONSTRUCTURAL COMPONENTS

13.1.3 Component Importance Factor.

All components shall be assigned a component importance factor as indicated in this section. The component importance factor, I_p , shall be taken as 1.5 if any of the following conditions apply:

- 1. The component is required to function for life-safety purposes after an earthquake, including fire protection sprinkler systems.*
- 2. The component contains hazardous materials.*
- 3. The component is in or attached to an Occupancy Category IV structure and it is needed for continued operation of the facility or its failure could impair the continued operation of the facility.*

All other components shall be assigned a component importance factor, I_p , equal to 1.0.

13.1.4 Exemptions.

The following nonstructural components are exempt from the requirements of this section:

- 1. Architectural components in Seismic Design Category B other than parapets supported by bearing walls or shear walls provided that the component importance factor, I_p , is equal to 1.0.*
- 2. Mechanical and electrical components in Seismic Design Category B.*
- 3. Mechanical and electrical components in Seismic Design Category C provided that the component importance factor, I_p , is equal to 1.0.*
- 4. Mechanical and electrical components in Seismic Design Categories D, E, and F where the component importance factor, I_p , is equal to 1.0 and either:
 - a. Flexible connections between the components and associated ductwork, piping, and conduit are provided.*
 - b. Components are mounted at 4 ft (1.22 m) or less above a floor level and weigh 400 lb (1780 N) or less.**
- 5. Mechanical and electrical components in Seismic Design Categories D, E, and F where the component importance factor, I_p , is equal to 1.0 and
 - a. Flexible connections between the components and associated ductwork, piping, and conduit are provided.*
 - b. The components weigh 20 lb (89 N) or less or, for distribution systems, weighing 5 lb/ft (73 N/m) or less.**

13.6 MECHANICAL AND ELECTRICAL COMPONENTS

13.6.1 General.

Mechanical and electrical components and their supports shall satisfy the requirements of this section. The attachment of mechanical and electrical components and their supports to the structure shall meet the requirements of Section 13.4. Appropriate coefficients shall be selected from Table 13.6-1.

EXCEPTIONS:

Light fixtures, lighted signs, and ceiling fans not connected to ducts or piping, which are supported by chains or otherwise suspended from the structure, are not required to satisfy the seismic force and relative displacement requirements provided they meet all of the following criteria:

- 1. The design load for such items shall be equal to 1.4 times the operating weight acting down with a simultaneous horizontal load equal to 1.4 times the operating weight. The horizontal load shall be applied in the direction that results in the most critical loading for design.*
- 2. Seismic interaction effects shall be considered in accordance with Section 13.2.3.*
- 3. The connection to the structure shall allow a 360 range of motion in the horizontal plane. Where design of mechanical and electrical components for seismic effects is required, consideration shall be given to the dynamic effects of the components, their contents, and where appropriate, their supports. In such cases, the interaction between the components and the supporting structures, including other mechanical and electrical components, shall also be considered.*

13.6.2 Component Period.

The fundamental period of the mechanical and electrical component (and its attachment to the building), T_p , shall be determined by the following equation provided that the component and attachment can be reasonably represented analytically by a simple spring and mass single degree-of-freedom system:

Continued on next page...

VICE PRESIDENT, LEGISLATIVE CONTINUED...

$$T_p = 2\pi \sqrt{\frac{W_p}{K_p g}}$$

Where:

T_p = component fundamental period,

W_p = component operating weight,

g = gravitational acceleration,

K_p = stiffness of resilient support system of the component and attachment,

determined in terms of load per unit deflection at the center of gravity of the component

Alternatively, the fundamental period of the component in s (T_p) is permitted to be determined from experimental test data or by a properly substantiated analysis.

TABLE 13.6-1 SEISMIC COEFFICIENTS FOR MECHANICAL AND ELECTRICAL COMPONENTS

MECHANICAL AND ELECTRICAL COMPONENTS	a_p^a	R_p^b
Air-side HVAC, fans, air handlers, air conditioning units, cabinet heaters, air distribution boxes, and other mechanical components constructed of sheet metal framing.	2.5	6.0
Wet-side HVAC, boilers, furnaces, atmospheric tanks and bins, chillers, water heaters, heat exchangers, evaporators, air separators, manufacturing or process equipment, and other mechanical components constructed of high-deformability materials.	1.0	2.5
Engines, turbines, pumps, compressors, and pressure vessels not supported on skirts and not within the scope of Chapter 15.	1.0	2.5
Skirt-supported pressure vessels not within the scope of Chapter 15.	2.5	2.5
Elevator and escalator components.	1.0	2.5
Generators, batteries, inverters, motors, transformers, and other electrical components constructed of high deformability materials.	1.0	2.5
Motor control centers, panel boards, switch gear, instrumentation cabinets, and other components constructed of sheet metal framing.	2.5	6.0
Communication equipment, computers, instrumentation, and controls.	1.0	2.5
Roof-mounted chimneys, stacks, cooling and electrical towers laterally braced below their center of mass.	2.5	3.0
Roof-mounted chimneys, stacks, cooling and electrical towers laterally braced above their center of mass.	1.0	2.5
Lighting fixtures.	1.0	1.5
Other mechanical or electrical components.	1.0	1.5
VIBRATION ISOLATED COMPONENTS AND SYSTEMS^b		
Components and systems isolated using neoprene elements and neoprene isolated floors with built-in or separate elastomeric snubbing devices or resilient perimeter stops.	2.5	2.5
Spring isolated components and systems and vibration isolated floors closely restrained using built-in or separate elastomeric snubbing devices or resilient perimeter stops.	2.5	2.0
Internally isolated components and systems.	2.5	2.0
Suspended vibration isolated equipment including in-line duct devices and suspended internally isolated components.	2.5	2.5
DISTRIBUTION SYSTEMS		
Piping in accordance with ASME B31, including in-line components with joints made by welding or brazing.	2.5	12.0
Piping in accordance with ASME B31, including in-line components, constructed of high or limited deformability materials, with joints made by threading, bonding, compression couplings, or grooved couplings.	2.5	6.0
Piping and tubing not in accordance with ASME B31, including in-line components, constructed of high-deformability materials, with joints made by welding or brazing.	2.5	9.0
Piping and tubing not in accordance with ASME B31, including in-line components, constructed of high- or limited-deformability materials, with joints made by threading, bonding, compression couplings, or grooved couplings.	2.5	4.5
Piping and tubing constructed of low-deformability materials, such as cast iron, glass, and nonductile plastics.	2.5	3.0
Ductwork, including in-line components, constructed of high-deformability materials, with joints made by welding or brazing.	2.5	9.0
Ductwork, including in-line components, constructed of high- or limited-deformability materials with joints made by means other than welding or brazing.	2.5	6.0
Ductwork, including in-line components, constructed of low-deformability materials, such as cast iron, glass, and nonductile plastics.	2.5	3.0
Electrical conduit, bus ducts, rigidly mounted cable trays, and plumbing.	1.0	2.5
Manufacturing or process conveyors (nonpersonnel).	2.5	3.0
Suspended cable trays.	2.5	6.0

^a A lower value for a_p is permitted where justified by detailed dynamic analyses. The value for a_p shall not be less than 1.0. The value of a_p equal to 1.0 is for rigid components and rigidly attached components. The value of a_p equal to 2.5 is for flexible components and flexibly attached components.

^b Components mounted on vibration isolators shall have a bumper restraint or snubber in each horizontal direction. The design force shall be taken as $2F_p$ if the nominal clearance (air gap) between the equipment support frame and restraint is greater than 0.25 in. If the nominal clearance specified on the construction documents is not greater than 0.25 in., the design force is permitted to be taken as F_p .

J. Francisco DeHoyos, Vice President, Legislative
aspe.chicago.vpl@gmail.com



VICE PRESIDENT, MEMBERSHIP

June Greetings,

Thank you all who attended the May Post Meeting. We were able recognize folks celebrating membership anniversaries and vote in the new Chapter officers.

I am looking forward to serve as the incoming Chapter Vice President Technical. I would like to thank the outgoing VP Tech (and President-Elect) Mark Mannarelli, for his outstanding work on the Board...I got some big shoes to fill, but am grateful for the challenge. Congrats also to the new Chapter VP Membership, Chris Sbarbaro.

This summer, the Board will coming up with the calendar for the 2015-2016 Chapter Year. I want to ensure that the meeting lineup has topics of interest to all members – old and new, so:

- Chapter Members – Please let me know what topics you are interested in hearing about. Can be whatever seems of interest – plumbing design, new technologies, Code issues, etc.
- Potential Speakers – Please let me know if you have any questions regarding what the Chapter's minimum presentation requirements are in order for us to issue continuing education credits.

My last items as outgoing VP Membership...

- If you have a membership anniversary and did not get your pin at the May meeting and would like to get it at the Golf Tournament, please let me know ASAP.
- New members to welcome to the Chicago Chapter:
 - ◇ Trevor McDougall
 - ◇ Joel Frank
 - ◇ Frank Gallagher
 - ◇ Heidie Loudermilk

Until Next Time...

April Ricketts, PE, CPD, LEED AP BD+C, Vice President Membership

rickettsa@cdmsmith.com: 312.346.5000



ADMINISTRATIVE SECRETARY

Greetings Members,

We had a fantastic turnout at Westwood Tap and Tavern for our May meeting; we had over 60 attendees; the elections were held, annual pins were given out. Steve Schira at Liquid Tech won \$105 from the 50/50 raffle and donated his portion back to Feed our Staving Children, and the best for last George Pagosh from RC Sales was the free dinner winner.

Our next event will be the Annual Golf Outing at Hilldale Country Club in Hoffman Estates on June 19th, with breakfast in the snack shop at 7:30 am and a shot gun start at 8:30am. A HUGE THANKS (and that's with all caps) to Steve Triphahn for his continued support and time, to be our Golf Outing Chairman.

I hope to see you there and thank you for supporting those who support you.

David J. Erickson Sr., Administrative Secretary

david.erickson@viega.us: 312.519.5629

Pathogen Control by Design

Design strategies to minimize microbial growth in commercial plumbing systems

Viega and Tim Keane of Legionella Risk Management are offering a training course on how to maintain water quality and minimize microbial growth in commercial plumbing systems. Don't miss this opportunity to learn about waterborne pathogens and how to guard against them.

Pathogen Control by Design

- Case studies of Legionnaires' disease outbreaks
- Legionella guidelines and standards from a liability perspective
- Design factors that impact pathogen control



Tim Keane is a consultant with Legionella Risk Management Inc. and is one of the country's leading engineering experts in methods to control and minimize the risk of Legionella.

He has 25 years experience in industrial and commercial water treatment consulting with the last 10 years being focused on waterborne pathogen control.

He also has 10 years experience as a Project Engineering Manager both in new construction and facility operations.

He has worked with healthcare, commercial, institutional, industrial and municipal facilities in the US and internationally and has been involved in the following areas; new construction plumbing design review, waterborne pathogen risk management program development and implementation, plumbing system risk assessments, outbreak investigations and consulting on water treatment issues.

Tim has given several presentations on ground breaking issues related to Legionnaires' disease. He has presented at the American Water Works Association (AWWA) 2012 Water Quality Technology Conference, the International Emerging Technology Symposium and the 2014 American Society of Plumbing Engineers (ASPE) Convention.

See the back of this flyer for dates and locations

To register, go to: www.viega.us/training

For more information call 1-800-976-9819, ext. 200

The global leader
in plumbing, heating
and pipe joining systems

viega

July 21 Chicago, IL

Chicago Marriott O'Hare
8535 W Higgins Rd
Chicago, IL 60631

Additional Dates and Locations:

September 22 Houston, TX

October 14 New York City, NY

Course Fees - FREE

- Course Includes: Pathogen Control by Design training, airfare, lodging and meals
- \$200 refundable deposit for those requiring airfare
- Course Time: 8:30 AM - 4:30 PM
- CEU credits available where applicable



To register, go to:

www.viega.us/training

For more information call

1-800-976-9819, ext. 200

Viega LLC

Phone: 1-800-976-9819
insidesales@viega.us



Hurry, space is very limited!

**The global leader
in plumbing, heating
and pipe joining systems**

viega

AYP LIAISON

The AYP group had another successful happy hour event with our first ever "Mingle with a Professional" at the Headquarters Beercade of River North. Thank you to Mike McGaughn for joining us as our "professional." He is a wealth of knowledge and may have even recruited a few of us to join Chicago's ASSE chapter! Also a big thank you to Bryan Fonseca on behalf of Repco for their sponsorship of the evening. I hear Bryan actually has a rather high score documented for the Gallagher video game if anyone is interested in a challenge at a future event. ASPE general meetings will be taking a break for the summer, but with the nice weather comes plenty of opportunities for AYP events and happy hours at Chicago's amazing beer gardens. I see some more mingling, learning, and even some philanthropy opportunities in the summer future.

Just a reminder that the AYP group is meant to inspire and get to know the young faces of ASPE. If anyone is interested in joining the AYP committee or leading a seminar, activity, or social, please contact Emily Smith (esmith@primeraeng.com) to discuss details. This group is about you and your needs and all ideas are welcome and encouraged!

Emily Smith, Chicago Chapter AYP Liaison
esmith@primeraeng.com



CORRESPONDING SECRETARY: INDUSTRY NEWS

Congratulations to the new comers of the ASPE board as well as those re-elected. It is always good to pay back the society that does so much for us. I hope to see you all at the Golf Outing and family picnic. Have a safe and fun summer!!!

American Society of Plumbing Engineers (ASPE)
(<http://chicago.aspe.org/>)

Chicago ASPE Chapter Annual Golf Outing

Date: Thursday, May 21, 5:30 PM

Location: Hilldale Golf Club

1625 Ardwick Dr., Hoffman Estates, IL

Details: <http://chicago.aspe.org/>

Chicago ASPE Chapter Annual Family Picnic

Date: Saturday, Aug 8

Location: Schiller Woods, Grove 12

Near Irving Park Rd. and Cumberland Ave, Schiller Park, IL

Details: <http://chicago.aspe.org/>

American Society of Sanitary Engineering (ASSE)
(<http://www.asse-plumbing.org/index.html>)

Nothing scheduled at the time of this writing.

National Fire Protection Association (NFPA)
(www.nfpa.org)

NFPA Conference & Expo

Dates: June 22-25, 2015

Location: McCormick Place

2301 S Martin Luther King Dr, Chicago, IL 60616

Details: <http://www.nfpa.org/conference>

NFPA training throughout the US:

Details: <http://www.nfpa.org/training/events%20calendar.aspx>

American Society of Professional Estimators (ASPE)
(<http://www.aspechicago.org/>)

2015 ASPE Annual Meeting & Estimator's Summit

Dates: June 24-28, 2015

Location: Hilton San Diego Resort & Spa
San Diego, CA

Details: <https://www.regonline.com/builder/site/default.aspx?EventID=1671824>

USGBC - Illinois Chapter (LEED)

(<http://www.usgbc-illinois.org/education/chapter-events-calendar/>)

See link above for several events.

Society of Fire Protection Engineers (SFPE)
(<http://www.sfpe.org/>)

Nothing scheduled at the time of this writing.

Illinois Fire Prevention Association (IFPA)
(www.ifpanet.org)

Nothing scheduled at the time of this writing.

Continued on next page...

CORRESPONDING SECRETARY: INDUSTRY NEWS CONTINUED...

Illinois Chapter of ASHRAE

(<http://www.illinoisashrae.org/>)

ASHRAE Illinois Chapter Meeting

Date: Tuesday, June 9, 5:30 PM

Location: Holiday Inn Chicago Mart Plaza (LaSalle

Room)

350 West Mart Center Dr, Chicago, IL 60654

Details: <http://illinoisashrae.org/meetinginfo.php?id=103>

ASHRAE Illinois Chapter Annual Golf Outing

Date: Thursday, Sept 24, 8:00 AM

Location: St. Andrews Golf Course

2241 Route 59, West Chicago, IL 60185

Details: <http://illinoisashrae.org/calendar.php>

Refrigeration Service Engineer's Society (RSES)

(www.rses.net)

No upcoming meetings due to "Summer break"

PAMCANI

(www.pamcani.org)

PAMCANI has developed an industry-wide calendar listing events throughout the year that can be found here: [http://](http://www.calendarwiz.com/calendars/calendar.php?crd=pic&op=cal&month=6&year=2015&PHPSESSID=45f1ce63e07654bffa4aaadd507e79d)

www.calendarwiz.com/calendars/calendar.php?crd=pic&op=cal&month=6&year=2015&PHPSESSID=45f1ce63e07654bffa4aaadd507e79d

Illinois Association of Plumbing-Heating-Cooling Contractors (ILPHCC)

(www.ilphcc.com)

Nothing scheduled at the time of this writing...

National Rural Water Association (NRWA)

(<http://www.nrwa.org/>)

2015 Water Pro Conference

Dates: Sept 28-30, 2015

Location: Oklahoma City, OK

Details: <http://nrwa.azurewebsites.net/about-us/future-nrwa-events/>

American Water Works Association (AWWA)

(www.awwa.org)

2015 Annual Conference & Exposition

Dates: June 8-10, 2015

Location: Anaheim Convention Center
Anaheim, CA

Details: <http://www.awwa.org/conferences-education/conferences/annual-conference.aspx>

Chris Sbarbaro, PE, CPD, GPD, LEED AP BD+C, Corresponding Secretary

csbarbaro@consentini-il.com



Chicago ASPENews



2014-2015 Preliminary ASPE Chicago Meeting Schedule

Date	Primer & Technical Presentation	Location
August 9, 2014	ASPE Chicago Chapter Family Picnic & Pig Roast	Schiller Woods Grove #12 Irving Park Rd & Cumberland Ave Chicago, IL
September 18, 2014	Chicago Chapter September Product Show will not be provided this year due to the ASPE Convention being in town	ASPE Convention and Exposition McCormick Place Convention Center 2301 S. Lakeshore Drive, Chicago, IL
October 16, 2014	Manufacturer Spotlight: Viega "Condensing Water Heaters—Things to be Aware Of " by Lochinvar	La Villa Restaurant 3632 N Pulaski Rd Chicago, IL
November 20, 2014	Manufacturer Spotlight: Lochinvar ICC Joint Meeting—"New 2015 International Code Items That Affect The Design of Plumbing Systems" by Fred Grable	Athena Restaurant 212 S Halsted St Chicago, IL
December 18, 2014	Another Fun Booster Night—Game Night!	La Villa Restaurant 3632 N Pulaski Rd Chicago, IL
January 15, 2015	Manufacturer Spotlight: Uponor Water Heater Piping Design by Chris Wisinski	Athena Restaurant 212 S Halsted St Chicago, IL
February 19, 2015	Manufacturer Spotlight: Meilner Sales "Booster Pumps" by Ed Ross of QuantumFlo, Inc.	Westwood Tavern & Tap 1385 N. Meacham Rd Schaumburg, IL
March 19, 2015	Manufacturer Spotlight: Bornquist "Water Softeners: Sizing and Configurations" By: Steve Lamere, Marlo Incorporated	La Villa Restaurant 3632 N Pulaski Rd Chicago, IL
April 16, 2015	Manufacturer Spotlight: Moen "Alternate Materials for Pipe and Fittings, and Effects to the Illinois Code" by: Uponor	Venuti's 2251 W. Lake Street Addison, IL
May 21, 2015	Manufacturer Spotlight: Maddock Industries, Inc. "Medical Gas Presentation—Tips for Designers, Code Issues and Lessons Learned" by Tim Dance, Medical Gas Certifier	Westwood Tavern & Tap 1385 N. Meacham Rd Schaumburg, IL
June 19, 2015	Annual Golf Outing	Hilldale Golf Club 1625 Ardwick Drive Hoffman Estates, IL
August 8, 2015	ASPE Chicago Chapter Family Picnic & Pig Roast 11:00 am to 4:00 pm	Schiller Woods, Grove #12 Cumberland Ave. & Irving Park Rd. Chicago, IL

If you would like to present any of these topics or become a meeting sponsor, please contact Mark Mannarelli at mmannarelli@syska.com.