



Chicago ASPENews



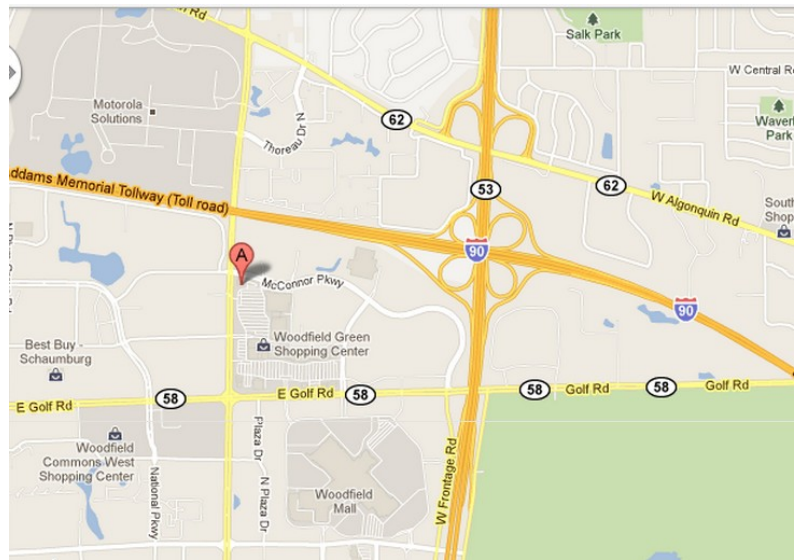
Chicago Regional Chapter of the American Society of Plumbing Engineers
Vol. 46, No. 7
February, 2015



Chicago Chapter General Meeting Thursday February 19, 2015



Westwood Tavern & Tap
1385 N. Meacham Road
Schaumburg, IL 60713



AGENDA

- 5:30pm Cocktail Hour
- 6:30pm Dinner, (\$35 ASPE Members with RSVP/\$40 Non-Members and Walk-ins)
- 7:15pm **Manufacturer Spotlight:**
Meilner Mechanical Sales
- 7:30pm Presentation – *Booster Pumps* by Edward Ross of QuantumFlo, Inc.



RSVP as soon as possible to Mark Mannarelli, VP Technical!

- ◇ Call: 312.771.4057
- ◇ Email: Chicago.ASPE.RSVP@gmail.com
- ◇ Go to Chicago.aspe.org and RSVP!

MENU

Appetizers:

- House salad
- Soup of the day

Main Course:

- Fresh rolls and butter
- Prime rib—hardwood smoked black angus beef served with homemade au jus
- Vegetable medley
- Twice baked potatoes

Dessert:

- NY style cheesecake

Drinks:

- Iced-tea
- Coffee & soft drinks

Local chapters are not authorized to speak for the Society



PRESIDENT'S MESSAGE

President's Message

Seems all of us are off to a very busy 2015! There is a lot of activity out there which keeps us all working hard. Let's not forget ASPE Chicago in our daily grind, and I say that as my article was submitted a few days late.

January Meeting Recap

Another great Spotlight by Uponor/Deery-Pardue Associates. Matt Pardue gave a great presentation on new PEX technologies. Athena again gave us great food. Chris Wisinski, from Bornquist, had a presentation on Water Heating Piping that was very well done!

We also had another good pot for the 50/50 raffle.

THANKS to all that attended!

February Meeting

For our February meeting, we are going to the suburbs to the Westwood Tavern (one of my fav's) see details as you read on

2015 ASPE Chicago Calendar Update

Hope everyone got their calendars, if not let any board member know.

ASPE Chicago Product Show 2015 Update

Mark Nasuta and his committee have been hard work hunting down a new location for the product show. Again, if you would like to get involved in the product show please contact Mark @ mnasuta@deery-pardue.com

AYP (ASPE Young Professionals) - We need your help, you younger folks!

Please get us ideas on other events the 'younger crowd' would like. Unfortunately the first planned event of the year had to be postponed due to lack of RSVPs. Would a lunch event be better for a meeting? Please give us your input. E mail Theresa Allen: tallen@grummanbutkus.com

2015 CPD Exam

If anyone is interested look inside at the VP Education article for more information

Student Chapter

Chris Sbarbaro has been reaching out to other tech schools, Universities and Community Colleges to try and stir up a little more activity in this area for the Student Chapter.

Enjoy reading the rest of the newsletter!

Rick Butler, President

rbutler@lochinvar.com; 224 238.8515

~Survey for ASPE members 35 and younger~

Attention all Chicagoland ASPE Young Professionals – in order to better serve your needs, please take 2 minutes to fill out the following brief survey!

<https://www.surveymonkey.com/s/FBHCRXN>

Your participation will help us plan great events for this year! Thank you for your time and I hope to see you at this month's meeting!

Theresa Allen, Chicago Chapter AYP Liaison

tallen@grummanbutkus.com

CHAPTER OFFICERS

PRESIDENT

Rick Butler
Lochinvar
224.238.8515
rbutler@lochinvar.com

VICE PRESIDENT TECHNICAL

Mark Mannarelli
Syska Hennessy Group
312.450.6308
mmannarelli@syska.com

VICE PRESIDENT EDUCATION

Matt Pardue
Deery-Pardue Associates
630.350.7575
mpardue@deery-pardue.com

VICE PRESIDENT LEGISLATIVE

J. Francisco DeHoyos
Wight & Company
312.969.7000
aspe.chicago.vpl@gmail.com

VICE PRESIDENT MEMBERSHIP

April Ricketts, PE, CPD, LEED AP
CDM Smith
312.346.5000
rickettsa@cdmsmith.com

VICE PRESIDENT AFFILIATE

Nevo Martelli
nmartelli@262apex.com

TREASURER

Sean Allard, CPD
McGuire Engineers
312.930.2200
sallard@mepcinc.com

ADMINISTRATIVE SECRETARY

David J. Erickson Sr.
Symmons
847.287.0922
derickson@symmons.com

CORRESPONDING SECRETARY

Chris Sbarbaro, PE, CPD, GPD, LEED AP
Consentini
csbarbaro@cosentini-il.com

PRODUCT SHOW CHAIRMAN

Mark Nasuta
Deery-Pardue
mnasuta@deery-pardue.com

ASPE CHICAGO JOBS

PROGRAM COORDINATOR
TBD

GOLF OUTING CHAIRMAN

Steve Triphahn
W-T Engineering, Inc.
224.293.6301
steve.triphahn@wtengineering.com

HISTORIAN

Donald Johnson

NEWSLETTER EDITOR,

WEBMASTER & AYP LIAISON
Theresa Allen, P.E., CPD, GPD, LEED AP
Grumman/Butkus Associates
847.316.9285
tallen@grummanbutkus.com

WEBSITE

<http://chicago.aspe.org/>

FACEBOOK

<http://www.facebook.com/lauchicagochapter>

<https://www.facebook.com/groups/ASPE.Chicago/>

LINKEDIN

www.linkedin.com/groups?home=&qid=2393408



VICE PRESIDENT, TECHNICAL: TECHNICALLY SPEAKING

January's Meeting Recap

I would like to thank our presenter last month **Chris Wisinski** for his presentation on water heater piping. It was very informative and appeared that he had everyone's attention. Great job! Also thanks to **Matt Pardue** for his Manufacturer Spotlight presentation on Uponor Pex piping. Thanks to both of you for your support of the Chicago Chapter! I can't say enough how your support has helped throughout the years while being involved with the chapter.

We are currently looking at obtaining presenters for our upcoming Product Show that has moved to September (in lieu of April). Please contact Mark Nasuta at mnasuta@Deery-Pardue.com or for information on presenting this September at the Product Show or for next year's upcoming monthly meetings.

February's Meeting

Well it's almost that time for Valentine's Day! Make sure to get your favorite person(s) a card or flowers. This month's presentation will focus on booster pumps. The presenter will be Edward Ross, Northern Regional Manager for QuantumFlo, Inc. His territory covers New England to Alaska. Ed has 26 years of experience in the plumbing and domestic water booster system industry. He has vast knowledge in the design and sizing phase with engineers, coupled with numerous years of experience in the selection, sales, and startup/commissioning phase of these systems. Ed has an MBA in International Business and Finance from Point Park University in Pittsburgh, PA. Ed currently resides in Pittsburgh, PA with his wife April, and their two children. Ed will be presenting on "Pressure Booster System Applications."

Continued on next page...



Manufacturer Spotlight



***This month we would
like to thank:***



MEILNER

MECHANICAL SALES INC.

Thank you for your support!

VICE PRESIDENT, TECHNICAL: TECHNICALLY SPEAKING CONTINUED...

Definition of a Booster Pump

Booster pumps are devices used to increase the pressure of existing fluid flow systems. They are designed to help pumping systems achieve higher flow rates and overcome high system head. Typically, booster pumps are used in water systems or applications that have low waste contamination. They have a variety of commercial, municipal, and military applications and are used in a range of industries, including aerospace, mining, and food processing. Booster pumps work in conjunction with other pumps; they themselves cannot transport any fluid in a system. They are designed only to "boost" the performance of an existing pumping system. Booster pumps are typically centrifugal pumps, relying on one or more impellers to draw and move fluid.

My prediction for this year's Super bowl!

Congratulations to the New England Patriots!

For Your Reading Pleasure

I was searching the internet for the definition of a water booster system and came across this website www.inspectapedia.com which I thought had rather great incite on water booster pumps. It also talks about life expectancy of water pumps, water conservation measures, well flow rates and additional information pertaining to pumps. Additionally, it has articles on water pump cavitation, water pump duty cycle etc.

What the heck is FRACKING?

Fracking is the process of drilling down into the earth before a high-pressure water mixture is directed at the rock to release the gas inside. Water, sand and chemicals are injected into the rock at high pressure which allows the gas to flow out to the head of the well. The process is carried out vertically or, more commonly, by drilling horizontally to the rock layer. The process can create new pathways to release gas or can be used to extend existing channels.

Is Fracking putting our drinking water at a high level of contamination?

I read an article in [Water On-line](http://www.wateronline.com/doc/the-big-fracking-question-is-drinking-water-at-risk-0001) written by Blaise Ekechukwu and Jafar Soltan that talks about the understanding of what impact fracking has on the water we drink, water in industry, our economy and society as a whole. It also talks about the impact on the environment, risks being taken by companies and the solutions that should be considered. Check out the article here: <http://www.wateronline.com/doc/the-big-fracking-question-is-drinking-water-at-risk-0001>

Thank you,

Mark G. Mannarelli, Vice President, Technical

mmannarelli@syska.com



VICE PRESIDENT, EDUCATION

It was good to see everyone last month at Athena! We have some exciting opportunities for members to further their education including:

- Possible CPD review course in March for the upcoming test in April. Please contact me if you are interested in this.
- Mel Persin is offering courses at Oakton Community College on BIM (Building Information Modeling). This Spring 2015 they are offering an Introduction to BIM course. This is an introductory course using Autodesk Revit MEP software to learn BIM and Autodesk Revit for Mechanical, Electrical and Plumbing/Piping design and layouts. The course is fifteen weeks duration meeting on each Saturday between 1:00 – 5:00 PM starting January 31 through May 9. There are both credit and non-credit sections. Mel can be reached at mpersin@oakton.edu if you would like more information.

Matt Pardue, Vice President, Education

mpardue@deery-pardue.com



VICE PRESIDENT, LEGISLATIVE

2015 State of Illinois New Laws

New laws in relation to our industry that took effect on January 1st 2015 are as follows:

Architecture & Engineering Licensure (HB 4535/PA 98-0993): Allows architects, professional engineers, and structural engineers to opt out of submitting the Test of English as a Foreign Language certification if they have earned an advanced degree from an accredited institution in the United States.

- This law replaces everything after the enacting clause of the Illinois Architecture Practice Act, the Professional Engineering Practice Act and the Structural Engineering Practice Act of 1989. In the provisions concerning application for licensure, it provides that an applicant who has graduated from an architectural program outside the United States and whose first language is not English that subsequently earns an advanced degree from an accredited educational institution in the United States shall not be required to submit certification of passage of the Test of English as a Foreign Language (TOEFL) or a test of spoken English.

Storm Shelter Law (HB 2513/PA 98-0883): Provides that all new school building construction governed by the "Health/Life Safety Code for Public Schools" must include in its design and construction a storm shelter.

This law amends the School Code. It provides that, after the effective date of the amendatory Act, all new school building construction governed by the "Health/Life Safety Code for Public Schools" must include in its design and construction a storm shelter that meets the minimum requirements of the ICC/NSSA Standard for the Design and Construction of Storm Shelters (ICC-500), published jointly by the International Code Council and the National Storm Shelter Association. It also provides that nothing in this language precludes the design engineers, architects, or school district from applying a higher life safety standard than the ICC-500 for storm shelters.

Non-Natural Cosmetic Ban (SB 2727/PA 98-0638): Establishes a ban in Illinois on "microbeads," which are small plastic beads often used in cosmetic products like exfoliating face washes. Concerns have been raised that these beads are getting into the water supply and releasing toxic chemicals like PCBs, which are consumed by wildlife, and then in turn, consumed by humans. Over-the-counter drugs containing synthetic plastic microbeads cannot be sold in Illinois after December 31, 2019.

Elevator Safety (SB 641/PA 98-1090): Brings Illinois law into compliance with new standards for elevator safety inspectors. As of Jan. 1, 2014, the responsibility for setting standards for elevator inspectors was transferred from the American Society of Mechanical Engineers to the American National Standards Institute (ANSI). The legislation adds generic language so the statute does not need to be changed each time certification organizations change.

Sewer Cleaning Vehicles (SB 2620/PA 98-0942): Provides that weight limitations up to 66,000 pounds are allowed for sewer cleaning vehicles when operated or hired by a municipality when executing the emergency repair of sewers. These vehicles may not operate on the interstate or cross bridges. This will only apply to Cook, Lake, McHenry, Kane, DuPage, and Will Counties.

Library Procurement (SB 3071/PA 98-0952): Allows local libraries and library districts to accept contract bids other than the lowest bid for certain projects when the cost of those projects exceed \$20,000 and the lowest bid fails to meet the library's established specifications, including terms of delivery, quality and other requirements. The bill also identifies the types of contracts not subject to competitive bidding. It exempts emergency expenditures from competitive bidding when the emergency expenditure is approved by three-quarters of the members of the board.

Peer Reviews:

Our industry is in the fast track most of the time, and with deadlines piling up, and clients demanding more than the existing project actual phase, the possibilities of missing or placing wrong information are present. In the past few years MEP consulting firms have started offering project review services. These services, commonly called "peer reviews", are an independent opinion of the design approach of the different building systems.

Continued on next page...

VICE PRESIDENT, LEGISLATIVE CONTINUED...

The most important benefit, besides catching mistakes, is that we learn about the effect certain codes have on a particular design due to location, population, or sizing.

A good peer review will have three sections:

1. Code Violations
2. Data Discrepancy
3. Recommendations

Code violations: The constant effort to improve engineering design is always affecting the building codes. These code changes can seriously compromise a project. That being said, it is very important to write the code violation number and the date that section of the code became official. In the event that you do not agree with the citation, request an interpretation of the referenced code section. Some codes can be interpreted in more than one way.

Data Discrepancy: This is generally produced by having more than one person inputting data on project and/or by transferring information from a similar job into the current project. In order to save time, it is a very common to take standard notes, symbol lists, details, and even schedules from previous jobs to be applied in the current project. When this happens and the deadline is due, it is very difficult to catch everything that does not apply to the current job (like labels with wrong targets, information that is missing in schedules, descriptions of abbreviations or symbols, fixture types, etc.).

Keep in mind that if this information is missing from the submitted documents, it could be that it was simply not located in the correct place.

Recommendations: Recommendations are included when the peer reviewer sees that the client's specific design requests are not being complied with, or a different design approach could generate a beneficial cost impact. If you decide that some or all of the recommendations won't be implemented into your design, it is very important to respond indicating the reasons why. Most of the time the recommendations are outside of the parameters that limited the original design approach. Additionally, the client will be happy to know that the design engineer is paying attention to all the details and the design as a whole.

Peer reviews are essentially the "lessons learned" during the design phase.

J. Francisco DeHoyos, Vice President, Legislative

aspe.chicago.vpl@gmail.com



VICE PRESIDENT, MEMBERSHIP

February Greetings,

I recently attended ASHRAE's Convention and the AHR Exposition, which was held in Chicago in January. It was nice to bump into a few of you at the event, which makes sense since some of us are members in both organizations. It was also nice to see a few plumbing related booths mixed in at their typically HVAC predominant Product show. Since we are two sides of the same coin, it would be neat to see about having a joint event with the local ASHRAE Chapter. Any interest?

Welcome to the newest members of the ASPE Chicago Chapter:

- Brian Arendt
- Rich Lussier
- Gary Chelette
- Shane Exner

Until Next Time...

April Ricketts, PE, CPD, LEED AP BD+C, Vice President Membership

rickettsa@cdmsmith.com: 312.346.5000



ADMINISTRATIVE SECRETARY

Greetings Members,

If you missed the January meeting at Athena Restaurant you missed a great meeting with awesome food, friends and a presentation on "Water Heater Piping Design" by Chris Wisinski. The 50/50 raffle was for Chicago Collation for the Homeless who will receive \$80.00 and Emily Smith at Primera received the other half.

Our next meeting is at Westwood Tavern & Tap 1385 N. Meacham Rd Schaumburg, IL that starts with a 5:30pm Cocktail Hour. The main presentation is "Booster Pumps" by Patrick O'Boyle and the Manufacture Spot Light is on Meilner Sales.

Please RSVP at <http://chicago.aspe.org/> or contact Mark Mannarelli, VP Technical, via phone at 630-901-6446 or email at: Chicago.ASPE.RSVP@gmail.com.

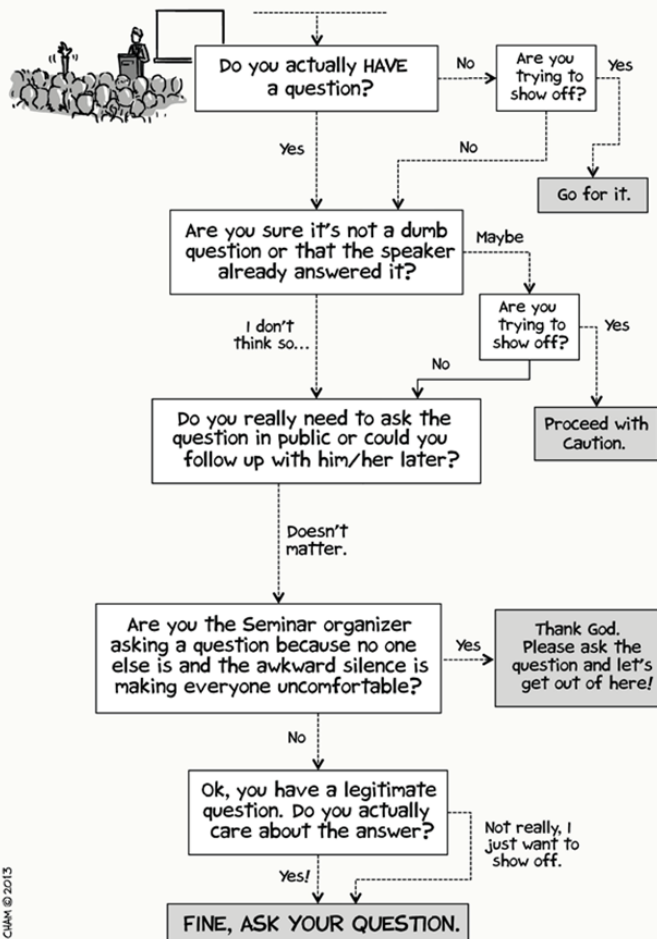
As I close I will leave you with a quick informational fun fact: It takes seventeen (17) trees to make one ton of paper, one ton of paper pollutes 20,000 gallons of water and one ton of paper consumes three cubic yards of land fill if not recycled! So please recycle when possible!

David J. Erickson Sr., Administrative Secretary
derickson@symmons.com: 847.287.0922



FROM LAU—CHAPTER MASCOT

Should you ask a Question during Seminar?





ATTENTION ASPE YOUNG **PROFESSIONALS!**



***Join fellow AYPs on Thursday, March 5th from 5pm-7pm
for a casual networking happy hour at***

**Mo's Cantina - River North
155 West Kinzie St, Chicago**

***Drinks and light appetizers will be provided
courtesy of the Chicago Chapter!***

Questions or want to RSVP? Contact Theresa Allen @ tallen@grummanbutkus.com

Upcoming Workshops and Education Events

Workshops in Milwaukee, WI Next Month

ASPE is teaming up with the Wisconsin Chapter for two full days of training and education.

On World Plumbing Day we are hosting a full-day workshop on **March 11** on [Plumbing Engineering for Engineers](#) presented by Douglas Nelson, P.E., GPD. This workshop awards 0.75 CEUs and will help boost your career while learning about a multitude of systems. Registration: \$250 for ASPE members and includes lunch.

And finally, participate in a [one-day Revit MEP 2015 workshop](#) on **March 12**. Registration: \$300 for ASPE members and includes a computer rental, lunch, and 0.8 CEUs per day and *space is limited*.

Not an ASPE member and want to save on membership and training? All training workshops mentioned above offer you an opportunity to join ASPE and participate in the workshops at a discounted rate. Information is provided on the respective webpages or you can call ASPE Education at 224-217-9019 for more details.

ASPE Education & Training | 6400 Shafer Court | Suite 350 | Rosemont, IL 60018
Phone: 224-217-9016
aspeeducation@aspe.org | www.aspe.org

GUEST COLUMN: ASHRAE, CPDTS & DESIGN GOALS

ANNOUNCEMENT: William Smith, FASPE, Named ASPE's New Executive Director/CEO

The ASPE Society is pleased to announce the appointment of William M. Smith, FASPE, as the Society's new Executive Director/CEO. He will continue to build and maintain relationships with other industry organizations to ensure that the public's health and safety are kept at the forefront of legislation and regulations regarding plumbing system design, installation, inspection, and maintenance.

**See this week's ASPE PIPELINE for the full story.*

WINTER IS COMING!

And the AHR 2015 Expo is over!

This year ASPE was invited to the annual meeting of the ASHRAE Associate Society Alliance (AASA), which is an international organization working to enable its members to participate collaboratively in the advancement of the arts and sciences of air-conditioning, heating and refrigerating technologies and to foster effective and fruitful exchanges of ideas and information between international participants. This forum invited a discussion on the effectiveness of AASA and discussed the ways to further enhance the participation of its members. Water was recognized as a key element to the health and safety of the world's population, and we need to work together to help make water accessible to all.

We also discussed:

The Technology Council (CCTC) <https://www.ashrae.org/File%20Library/docLib/HonorsandAwards/2014-06-Tech-Council-Report--CCTC-Olesen.pptx>

And

The United Nations Environment Programme (UNEP)
<http://www.unep.org/>

There is a lot going on in the world and we can help to save lives and provide a higher standard of living for billions of people that are suffering daily.

Congratulations to our new CPDT's!

We had a tremendous response to the new CPDT Program! Congrats to all that participated and passed the exam! Your next step will be CPD. And the Chicago Chapter can help! [Watch for the CPD Training in Chicago!](#)

Top Design Goals – Failure is Not an Option

Here is something to think about: What are the goals of our deliverables?

I believe it is to include the minimum amount of information that clearly illustrates and conveys all aspects of our design, so that it can be built and function as intended.

This is accomplished by addressing the number one concern:

1. Make sure our design is correct and coordinated!
1. Make it look good, clear and consistent!

Wait; there are TWO #1's? How can that be? There are two because both items are vital to a good design.

The top concern for our drawings is that our design actually works AND fits in the space available. My slogan: "If it doesn't fit, you're design is sh*t."

The other top concern for our drawings is that they are graphically clear and correct. It doesn't matter how good your design is, if the deliverables can't be read or understood. The client may only know what they can see.

No matter how perfect and ingenious your design, if it looks like garbage, you have failed. If your drawings are beautiful, but your design doesn't work, or doesn't fit, then you have failed.

And failure is not an option.



Nous Sommes ASPE (We are ASPE)
CPD, LEED-AP BD+C, ARCSA-AP, GPD, FASPE
Member of ASPE Chicago Chapter



CORRESPONDING SECRETARY: INDUSTRY NEWS

Another great meeting at Athena last month! Please be sure to RSVP for next month's meetings to help keep costs down. It will be at the Westwood Tap out in Schaumburg again. Just a reminder that you should think about getting some CEU's/PDH's while the weather here provides limited outdoor activity. I just got my 3 month warning that my LEED professional credentials are coming due...

American Society of Plumbing Engineers (ASPE)

(<http://chicago.aspe.org>)

Chicago ASPE Chapter Meeting

Date: Thursday, Feb 19, 5:30 PM

Location: Westwood Tavern & Tap

1385 N. Meacham Rd., Schaumburg, IL

Details: <http://chicago.aspe.org/>

American Society of Sanitary Engineering (ASSE)

(<http://www.asse-plumbing.org/calendar.html>)

Chicago ASSE Chapter Meeting

No upcoming events listed.

National Fire Protection Association (NFPA)

(www.nfpa.org)

NFPA Training throughout the US.

<http://www.nfpa.org/training/events%20calendar.aspx>

American Society of Professional Estimators

(www.aspechicago.org)

Chicago ASPE Chapter Meeting

Date: Thursday, Feb 19, 5:30 PM

Location: Barbakoa

1341 Butterfield Rd., Downers Grove, IL 60515

Details: <http://www.aspechicago.org/>

USGBC – Illinois Chapter (LEED)

(<http://www.usgbc-illinois.org/events/event-calendar/>)

See link above for several events.

Illinois Fire Prevention Association (IFPA)

(www.ifpanet.org)

IFPA Monthly Meeting

Date: Tuesday, Feb 10, 6:00 PM

Location: Glendale Heights, IL

6201 Joliet Rd., Countryside IL 60525

Details: <http://www.ifpanet.org/CalendarEvent.aspx?ID=79&PBD=2/1/2015>

Society of Fire Protection Engineers (SFPE)

(<http://www.chicagosfpe.org>)

Chicago SFPE Chapter Meeting

Date: Monday, Feb 2, 11:30 AM – 1:30 PM

Location: William Tell, Holiday Inn Countryside

6201 Joliet Rd., Countryside IL 60525

Details: [http://chicagosfpe.clubexpress.com/content.aspx?](http://chicagosfpe.clubexpress.com/content.aspx?page_id=87&club_id=396690&item_id=397820)

[page_id=87&club_id=396690&item_id=397820](http://chicagosfpe.clubexpress.com/content.aspx?page_id=87&club_id=396690&item_id=397820)

Illinois Chapter of ASHRAE

(www.illinoisashrae.org)

Monthly Meeting

Date: Tuesday, Feb 10, 5:00 PM

Location: Bucca di Beppo

90 Yorktown Mall Drive, Lombard, IL 60148

Details: <http://illinoisashrae.org/calendar.php>

PAMCANI

(www.pamcani.org)

PAMCANI industry-wide calendar: www.piccal.org

Illinois Association of Plumbing-Heating-Cooling Contractors (ILPHCC)

(www.ilphcc.com)

Illinois PHCC Expo & Educational Day

Date: Friday, Mar 20, 9:00 AM – 5:00 PM

Location: Drury Lane Conference Center

100 Drury Lane, Oakbrook Terrace, IL 60181

Details: <http://www.ilphcc.com/expo>

Refrigeration Service Engineer's Society (RSES)

(www.rses.net)

RSES Monthly Meeting

Date: Tuesday, Feb 10, 2015 @ 7:00 PM

Location: Silver Stallion Restaurant

1275 Lee St., Des Plaines, IL

Details: <http://www.rses.net/>

National Rural Water Association (NRWA)

(<http://www.nrwa.org/>)

2015 Water Pro Conference

Dates: Sept 28-30, 2015

Location: Oklahoma City, OK

Details: <http://nrwa.azurewebsites.net/about-us/future-nrwa-events/>

American Water Works Association (AWWA)

(www.awwa.org)

2015 Annual Conference & Exposition

Dates: June 8-10, 2015

Location: Anaheim Convention Center

Anaheim, CA

Details: <http://www.awwa.org/conferences-education/conferences/annual-conference.aspx>

Chris Sbarbaro, PE, CPD, GPD, LEED AP BD+C, Corresponding Secretary

csbarbaro@consentini-il.com



Chicago ASPENews



2014-2015 Preliminary ASPE Chicago Meeting Schedule

Date	Primer & Technical Presentation	Location
August 9, 2014	ASPE Chicago Chapter Family Picnic & Pig Roast	Schiller Woods Grove #12 Irving Park Rd & Cumberland Ave Chicago, IL
September 18, 2014	Chicago Chapter September Product Show will not be provided this year due to the ASPE Convention being in town	ASPE Convention and Exposition McCormick Place Convention Center 2301 S. Lakeshore Drive, Chicago, IL
October 16, 2014	Manufacturer Spotlight: Viega "Condensing Water Heaters—Things to be Aware Of " by Lochinvar	La Villa Restaurant 3632 N Pulaski Rd Chicago, IL
November 20, 2014	Manufacturer Spotlight: Lochinvar ICC Joint Meeting—"New 2015 International Code Items That Affect The Design of Plumbing Systems" by Fred Grable	Athena Restaurant 212 S Halsted St Chicago, IL
December 18, 2014	Another Fun Booster Night—Game Night!	La Villa Restaurant 3632 N Pulaski Rd Chicago, IL
January 15, 2015	Manufacturer Spotlight: Uponor Water Heater Piping Design by Chris Wisinski	Athena Restaurant 212 S Halsted St Chicago, IL
February 19, 2015	Manufacturer Spotlight: Meilner Sales "Booster Pumps" by Ed Ross of QuantumFlo, Inc.	Westwood Tavern & Tap 1385 N. Meacham Rd Schaumburg, IL
March 19, 2015	Manufacturer Spotlight: Bornquist "Water Softeners: Sizing and Configurations" By: Steve Lamere, Marlo Incorporated	La Villa Restaurant 3632 N Pulaski Rd Chicago, IL
April 16, 2015	"Alternate Materials for Pipe and Fittings, and Effects to the Illinois Code" by: Uponor	Venuti's 2251 W. Lake Street Addison, IL
May 21, 2015	Manufacturer Spotlight: Symmons "Medical Gas Presentation—Tips for Designers, Code Issues and Lessons Learned" by Tim Dance, Medical Gas Certifier	Westwood Tavern & Tap 1385 N. Meacham Rd Schaumburg, IL
June 19, 2015	Annual Golf Outing	Hilldale Golf Club 1625 Ardwick Drive Hoffman Estates, IL
August 8, 2015	ASPE Chicago Chapter Family Picnic & Pig Roast	TBD
If you would like to present any of these topics or become a meeting sponsor, please contact Mark Mannarelli at mmannarelli@syska.com .		