



Chicago ASPENEWS



Chicago Regional Chapter of the American Society of Plumbing Engineers
Vol. 43, No. 4 November, 2011



Chicago Chapter General Meeting Thursday November 17, 2011



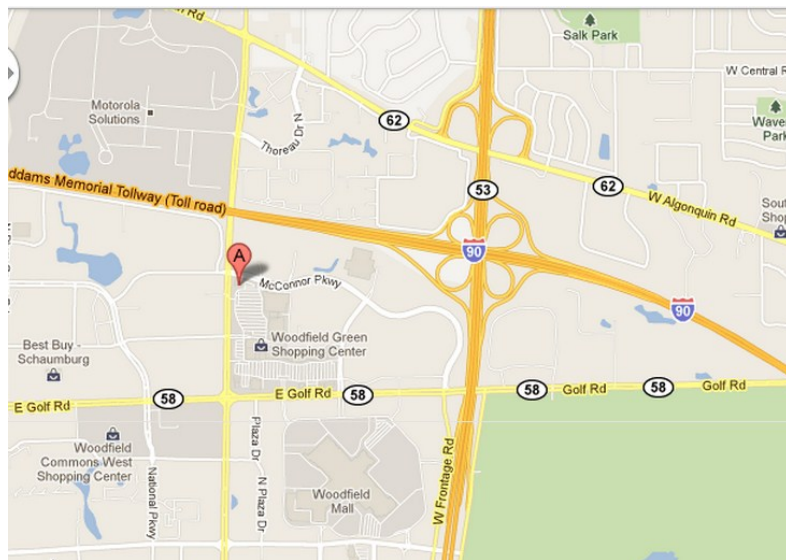
Westwood Tavern & Tap

1385 N. Meacham Road
Schaumburg, IL 60173

Plenty of free parking!



Please bring at least one new un-wrapped toy; the Marines will be by to pick up toys for Toys for Tots!



AGENDA

- 5:30pm Cocktail Hour, cash bar and free appetizers
- 6:30pm Dinner, (\$30 ASPE Members with RSVP/\$35 Non-Members and Walk-ins)
\$20 for military veterans
- 7:30pm **Presentation – *The Evolution of Plumbing Fixtures and the Current State of High Efficiency Plumbing Fixture Design, Construction and Implementation***
Presenter: Tim Smith, President of Engineered Building Solutions & ASPE Vice President, Technical.

RSVP as soon as possible to Rick Butler, VP Technical!

- ◇ Return the enclosed card for those of you getting this via US Mail
- ◇ Call: 224 238.8515
- ◇ Fax: 815 477.9984
- ◇ Email: Chicago.ASPE.RSVP@gmail.com

MENU

Appetizers:

- Cheese and veggie tray

Dinner:

- Caesar Salad
- Chicken Dumpling Soup
- Marinated and Grilled Flank Steak (alternate pasta dish available)
- Fire Roasted Sweet Potatoes
- Vegetable Medley

Dessert:

- Key Lime Pie

Beverages:

- Coffee, Tea, Water
- Cash Bar

Local Chapters are not authorized to speak for the Society



PRESIDENT'S MESSAGE

The Show Must Go On

This is a popular phrase in show business and it reminds us that regardless of the situations we face, the show must still be put on for the patrons. During our October meeting we faced some technical difficulties before the technical presentation.

However, we worked as a team and were able to resolve the issue. Thank you all for your collaboration and understanding, these efforts ensured we had another successful meeting. During that rainy October night, we had not one, but two great presentations, *The Value of ASPE and Networking* by Jason McDonald followed by *pH Neutralization* by Mark Girgenti of Burt Process Equipment.

ASPE Chicago Jobs Program

The Chicago Chapter has a jobs program going. We have a list of skilled professionals who are looking for work. If you are hiring, please email Jason McDonald at JasonSAMcDonald@gmail.com or call him at 312 798.9225 and let him know what your criteria are. We will pass that information on to our members who are looking. And if you are looking for work, you can let us know, too. This information is kept confidential.



ASPE Chicago Scholarship

ASPE Chicago Chapter, in an effort to promote the field of plumbing engineering, created the ASPE Chicago Chapter Engineering Scholarship to recognize a graduating high school student or college student who is/will be participating in an engineering curriculum.

ASPE Chicago Chapter will grant a maximum of two (2) \$1,000 (U.S.) scholarships in any one application year. The award will be paid directly to the college, university or technical school into the scholarship recipient's tuition payment account. Please go to our website for more information (<http://chicago.aspe.org>).

2012 ASPE Chicago Plumbing Classes

Please remember that the ASPE Chicago Chapter Plumbing Engineering Basics Class will start again in **March 2012**. The syllabus and registration have been attached to this newsletter and will be available on our website (<http://chicago.aspe.org>).

2011 ASPE Technical Symposium

By the time you read this newsletter, the 2011 ASPE Technical Symposium in sunny Orlando will be over. We knew it would be a success and we hope you all enjoyed the great technical sessions and networking opportunities. ASPE Chicago Chapter gave away three free trips; these trips included symposium registration, travel and lodging. Please stay tuned because in the December ASPENEWS you will read all the adventures of the ASPE Chicago Chapter in Disney World. By the way, Lau, ASPE Chicago mascot, stayed in Chicago, he didn't want to face Tim Smith alone, especially considering that he was going to be fully armed with a bag of golf clubs. He regrets not being there, but is looking forward to attending the ASPE Convention in Charlotte next year.

Have you befriended Lau on Facebook? If not, please do so, he shares useful information on his page and hopes to serve as a meeting point to boost networking.

<https://www.facebook.com/#!/profile.php?id=100001781686543&sk=info>.

Booster Night

"Wine is constant proof that God loves us and loves to see us happy." Benjamin Franklin.

Booster Night is possible thanks to the strong financial support we receive from our Affiliates, Manufacturers and Manufacturer Representatives as their contributions help us defer some of the costs associated with this holiday celebration, and assures we have a "happy" time during our event. Mick Bradford, ASPE Chicago Affiliate Liaison, will be sending out a letter soon with more information. Thank you very much for your continued support!

(continued on page 3) ----->

CHAPTER OFFICERS

PRESIDENT

Frank Sanchez, CPD
Grumman/Butkus Associates
847 316.9251
fxs@grummanbutkus.com

VICE PRESIDENT TECHNICAL

Rick Butler
Lochinvar
224 938.8515
rbutler@lochinvar.com

VICE PRESIDENT LEGISLATIVE

Mark Mannarelli
Environmental Systems Design
312 456.2354
mmannarelli@esdgglobal.com

VICE PRESIDENT MEMBERSHIP

Tony Navarro, PE
Lehman Design Consultants
312 901.9733
tnavarro@lehmandesigninc.com

TREASURER

Sean Allard, CPD
Environmental Systems Design
312 580.0533
sallard@esdgglobal.com

ADMINISTRATIVE SECRETARY

J. Francisco DeHoyos
dbHMS
312 915.0557
fdehoyos@dbhms.com

CORRESPONDING SECRETARY

Keith Seier, CPD
Environmental Systems Design
312 456.2338
kseier@esdgglobal.com

AFFILIATE LIAISON

Mick Bradford
Miller Sales
630 458.8816
mick@miller-sales.com

EDUCATION CHAIRMAN

Dan Fagan, PE, CPD
Cannon Design
312 960.8301
dfagan@cannondesign.com

NEWSLETTER EDITOR

Jason McDonald, CPD
Grumman/Butkus Associates
312 798.9225
JasonSAMcDonald@gmail.com

WEBMASTER

Jim Moynihan
Chicago Technical Sales
630 889.7121
CTSalesinc@aol.com

GOLF OUTING CHAIRMAN

Steve Triphahn
W-T Engineering, Inc.
224 993.6301
steve.triphahn@wtengineering.com

HISTORIAN

Donald Johnson

WEBSITE

<http://chicago.aspe.org/>

PRESIDENT'S MESSAGE (cont'd)



Marine Toys for Tots Foundation, a fine ASPE Chicago tradition

The Marine Toys for Tots Foundation started in Los Angeles in 1947. It is run by the United States Marine Corps Reserve which donates toys to children whose parents cannot afford to buy them gifts for Christmas. The mission of the program "is to collect new, unwrapped toys during October, November and December each year, and distribute those toys as Christmas gifts to needy children in the community in which the campaign is conducted", and hoping to "deliver a message of hope to less fortunate youngsters that will assist them in becoming responsible, productive, patriotic citizens."

Two thousand and eleven marks ASPE Chicago Chapter's seventh year contributing to this great cause, and as in previous years, we would like to invite you to donate **new unwrapped toys** (for infants - 15 year olds). Please bring them to our November meeting at the popular Westwood Tavern & Tap in Schaumburg.



For more information please visit the Marine Toys for Tots Foundation Chicago at <http://chicago-il.toysfortots.org/local-coordinator-sites/lco-sites/default.asp>, or give me a call if you have any questions.

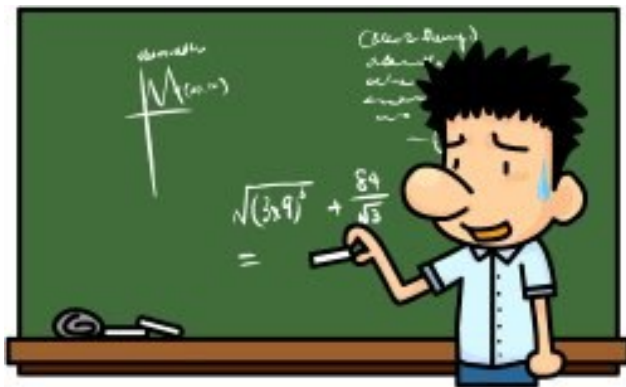
Finally, please read the rest of our newsletter as your Board of Directors puts in countless hours to keep you updated on industry events and legislative updates.

That's it for now; I hope to see you all on November 17 at Westwood Tavern & Tap in Schaumburg.

Frank Sanchez, CPD; President, and proud keeper of Lau
fxs@grummanbutkus.com; 847 316.9251

ASPE CHICAGO OFFERS PLUMBING ENGINEERING BASICS COURSE

The Chicago Chapter is proud to begin offering our continuing education course in **Plumbing Engineering Basics**, starting in the **March 7, 2012**. The course will be held Wednesday nights at the offices of ESD, 475 W. Jackson Blvd. in Chicago. The course consists of two semesters of 8 weeks each, and was last offered in 2008. Those who have participated in previous years overwhelmingly agree that the course was a worthwhile and outstanding value. For course description and information on how to register, see the flyer included with this newsletter.



ATTENTION AFFILIATES!!!

BOOSTER NIGHT is almost here, the best meeting of the year! You will be receiving an e-mail soon with the letter asking for contributions to help defray the costs for the night. Feel free to contact your manufacturers and ask for a contribution. There will be sponsorship recognition at the meeting. Look forward to seeing you at the November meeting at Westwood Tavern & Tap

in Schaumburg.

Mick Bradford, Affiliate Liaison
mick@miller-sales.com, 630 688.2635





TECHNICALLY SPEAKING

First off, early RSVP's would be most appreciated. It makes our meetings run a lot smoother for everyone.

October Meeting Recap

Thanks again to Mark Girgenti with Burt Process Equipment for the technical presentation. It was interesting on how one has completely different pH Neutralization systems for the certain types of applications, a little more elaborate than the old pH test strips. Also how throwing more water for dilution is basically wasting water. A special thanks to our past high school A/V techs who got us up and running after a cable issue.

This Month's Meeting

We are out to the "Burbs" again - Westwood Tavern & Tap in Schaumburg. We have a very "Topical" topic: "The Evolution of Plumbing Fixtures and the Current State of High Efficiency Plumbing Fixture Design, Construction and Implementation." We also have a special guest speaker, Mr. Timothy Smith, one of our own past BOD members and a Past President of the greatest Chapter in the world.

Timothy A. Smith, CPD, FASPE is President of Engineered Building Solutions, LLC. Tim has over 32 years of experience in the Consulting Engineering profession. He has specialized in Plumbing, Fire Protection and Civil design for over 25 years and is currently the Vice President Technical for the Society. Tim has served on the Society Board of Directors for over 10 years.

As we know, water conservation is always a hot topic. The price of water is also going to become a huge factor very soon, especially in the suburbs; quoting a local headline: "Get ready for 70% water rate hike if Emanuel gets his way". This will be a growing concern, whereas high efficiency fixture design will be a necessity, not a luxury. Not only is Lake Michigan water an issue, but the cities and counties that utilize local aquifers have a growing concern on the future capabilities of these aquifers.

The Chicago Chapter prides itself in offering several key presentations on water conservation in the past. This one will be right up there with the rest, with the most current information on these fixtures.

FINALLY: DON'T FORGET YOUR TOYS, UNWRAPPED, FOR THE TOYS FOR TOTS COLLECTION BY THE MARINES.

Rick Butler, Vice President Technical
rbutler@lochinvar.com; 224 238.8515

SAVE 5 BUCKS!!

It is easy, just RSVP 48 hours before our next meeting and not only you will pay the member rate but also you will be entered on a free dinner raffle.





HELLO AGAIN FROM YOUR FRIENDLY VP LEGISLATIVE

First and foremost, are there any ASPE members (in good standing) who have a college student or know of a college student enrolled in the engineering field? The ASPE Chicago Chapter Engineering Scholarship is now in the process of awarding two (2) students the amount of \$1,000 in any one application year. The scholarship is limited to chapter member's immediate family. To qualify, the student needs to be enrolled in an engineering curriculum. This is another great benefit for ASPE members and their families. The application must be returned by December 1, 2011 to be considered. Please see me at the November meeting or send an email to me at mmannarelli@esdglobal.com for additional information or to obtain an application.

Backflow Prevention

What is backflow, cross-connection and back siphonage?

- ⇒ **Backflow** is the flow of water or other liquids, mixtures, or substances into the distributing pipes of a potable supply from any source other than that intended. In drainage systems it is the reversal of flow.
- ⇒ **Cross-connection** is any physical connection or arrangement between two otherwise separated piping systems-one of which contains potable water and the other of which contains liquid or another substance of unknown or questionable safety-whereby flow may occur from one system to the other, the direction of flow depending on the pressure differential between the two systems.
- ⇒ **Back siphonage** is the flowing back of potentially contaminated or polluted water into the potable water supply piping due to a negative pressure in the potable water supply pipe.

How can I protect my plumbing systems?

Some of the common or typical backflow devices that help guard against backflow, cross-connection and back siphonage in water systems are: Air gap, RPZ (reduced pressure zone), double check detector, atmospheric vacuum breaker, pressure vacuum breaker and spill resistant vacuum breaker all are called out in the Chicago plumbing code as well as the Illinois State Plumbing Code.

Remember that most backflow devices should be tested and maintained annually. Refer to Illinois Plumbing Code section **890.1130 b** and Chicago Plumbing Code section **29(18-29-608)** for the appropriate device for your application and any maintenance requirements. Always check with the local code authority as well for backflow requirements.

For example:

Chicago requires that all mop receptors be provided with elevated vacuum breakers (7'-0" A.F.F.) where numerous outlying suburbs require the vacuum breaker on the mop receptor faucet.

I have included a great web site below for information on backflow. It gives numerous subjects pertaining to backflow such as testimonials, historical documents, and related sites for additional information.

<http://www.backflowpreventiontechzone.com>

Mark Mannarelli, Vice President Legislative
mmannarelli@esdglobal.com; 312 456.2354



NEWS FROM YOUR ADMINISTRATIVE SECRETARY

Greetings, the snow season is about to start. The October Chicago Chapter Meeting was a success partially thanks to the help of one our members, Ed Lichner from Luczak Sales, who came to the rescue providing the necessary electronics to ensure the presentation by Mark Gigenti from Burt Process Equipment was a success.

A total of 56 members attended the event. If you missed it you also missed a great food menu.

- **Free Dinner Raffle** winner was **Scott Jagodzinski**.
- **50/50 Raffle** winner was **Kent Swanson** from Metropolitan industries.

This month, ASPE Chicago Chapter will donate \$130.00 to **U.S Marine Corps Reserve Toys For Tots Program**.

http://www.toysfortots.org/contact_us/default.asp Please remember to bring your new unwrapped toys to our next meeting. Thank you for your participation.

Francisco DeHoyos, Administrative Secretary
fdehoyos@dbhms.com; 312 915.0557 ext. 251



MEMBERSHIP REPORT

Advancing the Profession

Have you ever used a Hunter's Curve? I imagine many of you have one at your desk, or have used a table or chart derived from Roy B. Hunter's timeless research. Wait, did I write timeless? Allow me to rephrase, the Hunter's Curve is becoming less timeless as time passes. Check it out:

In 1940, when the world was at war and the Allies were looking as bad as Rocky in the early rounds of a title match, Mr. Hunter released several research papers; the primary document was titled *"Methods of Estimating Loads in Plumbing Systems"*. His research was mostly an effort in statistics that would soon become the standard for sizing water supply piping. This standard of practice would endure for the next 70 years, a span much longer than any of Rocky's opponents! Today, we refer to the culmination of Roy Hunter's research as the Hunter's Curve and plumbing engineers have used it without falter (that is, until recently).

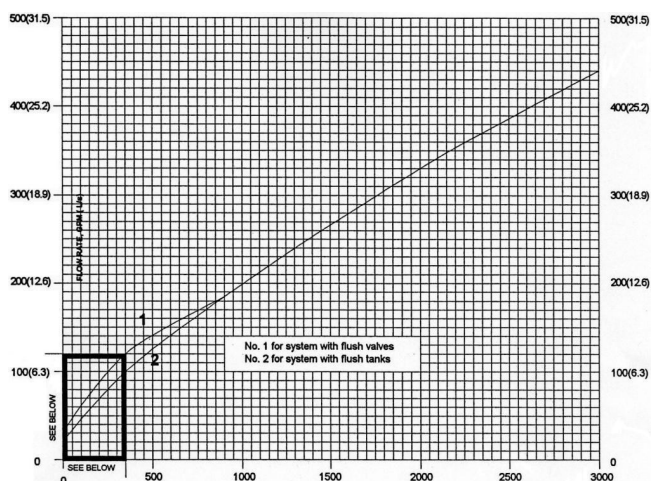
With the dawn of green buildings and a relentless focus on reducing the use of natural resources (i.e. potable water) the plumbing industry has responded with low consumption fixtures. Because the Hunter's Curve is based on the probability and expectation of water use, today's practice of reducing water consumption has upset the 'correctness' of Hunter's Curve. So where, in today's continually evolving design world, does one go to relearn pipe sizing?

This is the exact question ASPE Research is looking to answer. If you go to www.aspe.org, you can find a listing in the Research Foundation's Future Project List that states: *'Today's modern plumbing systems utilize flow control devices, automatic sensors, and timers and in general are just more efficient than the systems with which Hunter worked. The Foundation believes it is appropriate to revalidate these findings so that more efficient designs can be utilized in the construction of these systems.'*

Yes, ASPE intends to rewrite the book.

We have come full circle and you ask, why the hell is the Membership guy talking about research? The answer is simple; I am communicating to you the VALUE of ASPE. ASPE has a core motive to **Advance the Profession of Plumbing Engineering**. The Society is here to improve the industry through improving the profession. You are a part of that because of your membership, your dues help finance this *Historic and Unprecedented Undertaking!* Well, perhaps I am over-exaggerating a bit, Hunter gets credit for the first crack at pipe size standards, I digress. Being a member in ASPE means you have helped Advance the Profession! Good Job! You are really making waves. That's great! So, when your membership is up and you are looking at the renewal form, ask yourself: would Mr. Hunter re-up? Probably more scary, where would we be if he didn't? Think about it.

Tony Navarro PE, Vice President Membership
tnavarro@lehmandesigninc.com; 312 201.9733



NOT AN ASPE MEMBER? JOIN TODAY!

<https://aspe.org/Membership>



INDUSTRY NEWS

November brings us turkey and dressing but it also gives us our first product show and some great technical seminars within our industry. Support our industry and attend one of following industry meetings. If there is an organization you would like me to contact, please send me an e-mail at kseier@esdglobal.com.

American Society of Sanitary Engineering (ASSE) (www.asse-plumbing.org/Chapters/region04_il.html)

2011 ASSE Annual Meeting
November 9 – 12
New Orleans, LA
Cost: \$250 Members, \$300 Non-members
Contact: <http://asse-plumbing.org/am11.html>

Society of Fire Protection Engineers (SFPE) (www.chicagosfpe.org)

*November Chapter Luncheon Meeting – U of C Library
Addition Fire Protection*
Monday, November 7
11:30 sign-in with lunch at 12:00
Greek Islands Chicago, 200 S. Halsted St., Chicago, IL
Cost: Members with reservations \$25, Members walk-in and guest \$30, Firefighters in uniform \$15, fulltime students with valid ID \$10
Contact Jessica Dahl at jhubert-dahl@janusfiresystems.com or <http://chicagosfpe.clubexpress.com>

PAMCANI

PAMCANI has developed an industry-wide calendar listing events throughout the year. Go to www.piccal.org

Illinois Association of Plumbing-Heating-Cooling (ILPHCC) (www.ilphcc.com)

Illinois PHCC Expo
March 23, 2012
Drury Lane Conference Center, Oakbrook Terrace, IL
Contact: More info to follow

Illinois Fire Prevention Association (IFPA) (www.ifpanet.org)

IFPA November Meeting
Tuesday November 8; 7:00pm
Presentation: *Holiday Meeting*
Clubhouse; 298 Oakbrook Center; Oak Brook, IL
Cost: TBD
Contact/RSVP: <http://www.ifpanet.org/RSVP.aspx?DB=Cal&ID=42> at www.ifpanet.org

Illinois Chapter of ASHRAE (www.illinoisashrae.org)

ASHRAE Chapter Meeting
Tuesday, November 8, 2011
2:30pm registration
3pm-7pm seminars “Net Zero Buildings” and “Update on ASHRAE Standard 90.1 – 2010”
4:30pm cocktails and dinner (between presentations)
Jimmy’s Charhouse; 2290 Point Blvd.; Elgin, IL
Cost: \$65 for both seminars and dinner
Contact/RSVP: www.illinoisashrae.org or call 708 636.3604

USGBC – Illinois Chapter (LEED)

Events Calendar - <http://usgreenbuildingcouncilchicagochapter.roundtablelive.org/calendar?EventView=Mode=1&EventListViewMode=2&SelectedDate=9/9/2011&CalendarViewType=1>

Refrigeration Service Engineer’s Society (RSES) (www.rses.net)

RSES November Meeting
Tuesday, November 8, 2011; 7:00pm
Presentation: *Basic Economizer Troubleshooting*
The O’Hare Center, 10275 W. Higgins Rd., Rosemont, IL.
Notes: Free Parking, Free Admission

RSES December Meeting
Tuesday December, 13, 2011; 7:00pm
Presentation: *Frequency Drives and V-Belt Driven Fans*
The O’Hare Center, 10275 W. Higgins Rd., Rosemont, IL.
Notes: Free Parking, Free Admission



Keith Seier, Corresponding Secretary
kseier@esdglobal.com; 312 456.2338



NETWORKING AND THE VALUE OF ASPE

You folks have been hearing the sales pitch for ASPE over the past few months. It's true that membership has been dwindling and we (ASPE), both on the Chicago Chapter level and on the Society level, want to do all we can to keep each of you as members AND to recruit new members.

I want to give you a real world example of the value (and power) of networking in ASPE that involves me personally. And please let me preface this by telling you that I am writing this on the plane as my new wife, Laura, naps on the way to our honeymoon. PLEASE don't tell her I am working on ASPE stuff!

Many of you have heard that Laura and I are relocating from Chicagoland to Evansville, IN. Actually, she is already there and I will follow as soon as I find employment down there. The main tool I have been using in my job search is ASPE! There are two different paths that became available to me and both are DIRECT results of my involvement with ASPE.

When I first mentioned that I was looking for work in Evansville, some of our ASPE sales representatives and manufacturers (both current and past) were eager to help. I was quick to learn that there are far more than the two design firms in Evansville that I initially thought. Soon, my Evansville contact list grew to more than 30 names and 15 firms because of my ASPE friends – Glen Smith, Paul Riedinger, Ed Lichner and Victor Rilling.

As I started contacting some of the folks on my list, another ASPE opportunity came to light. This is a cool story and I hope you will all follow along. As you read through this, keep in mind that if I was not involved with ASPE, this opportunity would have NEVER happened! Ready? Here goes....

Central Indiana Chapter President Jim Rodgers emailed me at the end of August asking for suggestions on things to do on an upcoming trip to Chicago. I replied with a couple suggestions (e.g., Ford City Mall, Baby Doll Polka Club, Cabrini Green and things like that); I also mentioned that I am moving to Evansville and asked if he knew anyone down there who might be looking for a plumbing engineer.

Jim replied immediately saying that they are trying to start a satellite ASPE chapter in Evansville and sent me a meeting announcement for a lunch meeting IN Evansville on September 15, same day as our Chicago Chapter meeting. Everything inside me told me that I HAD to be at that meeting – the reason I missed the first Chicago Chapter meeting with our new President Frank Sanchez at the helm. My apologies to Frank and the rest of the Board for missing that; but, I think you guys all understand.

So, now I am ready to go to an ASPE meeting in Evansville on September 15 – an opportunity to network with the very people I need to meet! But, it gets BETTER! True, the fact that the lunch for designers and engineers was paid by the presenter (VERY cool) didn't hurt. Here is the awesome part – Jim asked if I would be willing to help his Administrative Secretary talk about ASPE. Of course I will help promote ASPE. And then the idea sunk in – not only will I be meeting the people I need to meet, I actually might get to talk to ALL of them! This is what some of us refer to as a Golden Opportunity!

As it turned out, September 15, 2011 became one of my best days ever professionally as the ASPE planets aligned over Evansville. Not only was I given some props by the local host of the meeting, Larry Fox, and the CI ASPE's Pierre Deubelbeiss, but Pierre turned the floor over to me immediately and for about 15 minutes I was able to talk with 25-30 of my soon-to-be peers both about me being on the job hunt and about how amazing ASPE is. I opened with the fact that I was there to network and never imagined I would have a chance to talk with ALL of them. It was awesome! I basically got to interview in front of all those people at once. I am happy to say that as soon as we get back from the honeymoon, I will be having my third interview as a direct result of that ASPE meeting!

ASPE has truly opened doors for me. The fact that I have been President of this amazing Chicago Chapter a couple times probably hasn't hurt. But, I think there is no denying the importance of networking in ASPE. I am getting help from old members, new members and more. This is a big reason why we ask you to step up and get involved. Why we ask you to put yourself out there and meet someone new at our meetings. Something we do not mention even though it is both a way of networking and thanking those sales reps and manufacturers who come by our offices for a quick visit, catalog update or lunch and learn – give them a few minutes of your time. You never know when one of you might be able to help out the other. No matter what happens in my job search, I will be eternally grateful to ASPE and the gentlemen I have men-

NETWORKING AND THE VALUE OF ASPE (cont'd)

tioned in this article for helping put me in a position to get my name AND face in front of potential employers. This is the value of ASPE at work!

Last thing I want to say is how much I appreciate my current employer, Grumman/Butkus Associates, and especially our President Dan Doyle (CPD and longtime ASPE Chicago member by the way) for the incredible support I have been given. Dan was the very first one to offer me leads in and around Evansville. Folks, it is difficult knowing that I will soon be leaving a firm that has been both home and family for the past 15 years. And it is a weird feeling openly looking for a job while still employed and openly discussing it with friends at work AND with my boss! G/BA and Dan Doyle, please know that your support has been SO appreciated and I cannot thank you enough.

With that, my ASPE friends, I will let you back to your work. If you get nothing else from this literary masterpiece, please understand that networking is vital especially in these, as you have heard so often over the past few years "tough economic times." The only way we can get through this is **together**. Help each other out. Give each other some of your time. Be welcoming to new people. Shake hands. Exchange smiles. Okay, it's getting deep in here now; so, I'll stop. I'll give you all an update when I can!

UPDATE: Wow, that was quick! Since I started this article, I am happy to report that I got an offer and we have decided to accept! I will start working in Evansville, IN at the end of November! I am excited for the challenge and know that there will be much to learn. How did I get in touch with these guys? Well, I said hello to a consulting engineer at the ASPE meeting on September 15, sat at his lunch table and then he introduced me to someone from this firm. I had an interview with them the next day and now here we are waiting for me to end my days with Grumman/Butkus and start my days with my new company. This door would NOT have opened without ASPE!



Jason McDonald, Newsletter Editor
jsm@grummanbutkus.com; 847 316.9204

OCTOBER MEETING ATTENDANCE

The following list of individuals attended the October 20, 2011 meeting of the ASPE Chicago Chapter. In accordance with ASPE Society policy, these individuals are entitled to 0.75 RU's towards the required 24 RU's needed every two years to maintain CPD registration. Meeting attendance is also recognized by the Illinois Department of Professional Regulation to count as 1 PDH towards the required 30 PDH's needed every two years to renew Professional Engineering licenses.

Andy Cornell	Francisco DeHoyos	Mark Girgenti	Scott Jagodzinski
Bill Bauer	Frank Sanchez	Mark Kaulas	Sean Allard
Bob Jackson	George Sobyra	Mark Mannarelli	Stuart Zwang
Bob Turk	Greg Luczak	Mark Nasuta	Theresa Allen
Chris Wisinski	Greg Nagrant	Michael Cwanek	Tom Hamilton
Craig Shannon	Harold Weil	Michael Hanney	Tom Higgins
Damon Cameron	Jason McDonald	Mike Cusack	Tom Lang
Dan Courtney	Jason Romano	Mike Imaoka	Tony Dauginas
Darren Rich	Jeff Cochran	Mike Ponx	Tony Navarro
David DeBord	Joe McCleery	Mike Temes	Wayne Robinson
David Hood	Joel Pedigo	Nevo Martelli	
David Lehman	Julius Ballanco	Paul Riedinger	
E.J. Kedzie	Keith Seier	Ray Cruz	
Ed Lichner	Ken Cutler	Ray Dean	
Emily Smith	Kent Swanson	Rick Butler	

2011-2012 ASPE CHICAGO MEETING SCHEDULE

DATE	TECHNICAL PRESENTATION	LOCATION
September 15, 2011	<i>12 Myths of VFD Booster Systems</i> presented by Richard Hansen of SyncroFlo/ FTI Pumps and Controls	Parthenon 314 S Halsted St Chicago, IL
October 20, 2011	<i>Active PH Neutralization/Industrial Waste Treatment</i> Presented by Mark Girgenti of Burt Process Equipment	La Villa Restaurant 3632 N Pulaski Rd Chicago, IL
10/27/2011 - 10/30/2011	<i>ASPE Technical Symposium, Orlando, FL</i> http://aspe.org/node/716	Disney World
November 17, 2011	<i>The Need for Water Conservation and the Evolution of High Efficiency Plumbing Fixtures</i> Presented by Timothy A. Smith, Engineered Building Solutions & Society Vice President, Technical	Westwood Tavern & Tap 1385 N. Meacham Rd Schaumburg, IL
December 15, 2011	<i>Booster Night - Special Entertainment</i>	La Villa Restaurant 3632 N Pulaski Rd Chicago, IL
January 19, 2012	<i>ASPE Chicago Movie Night</i> <i>Related to Plumbing Industry</i>	La Villa Restaurant 3632 N Pulaski Rd Chicago, IL
February 16, 2012	<i>Legionella, Other Waterborne Pathogens and Electric Faucets</i> <i>Discussion on new ASHRAE Legionella Code</i> Presented by Delta Faucets	Parthenon 314 S Halsted St Chicago, IL
March 15, 2012	<i>Gas Rebate Program for Water Heaters and Kitchen Equipment</i> NICOR <i>Plus gas piping for Water Heaters</i>	La Villa Restaurant 3632 N Pulaski Rd Chicago, IL
April 19, 2012	<i>41st Annual ASPE Chicago Product Show and Seminars</i> <i>(seminar suggestions are welcome!)</i>	White Eagle 6839 N Milwaukee Ave Niles, IL
May 17, 2012	<i>Sales for Engineers</i> <i>Emergency Wash Stations</i> <i>Reduction of Lead in Drinking Water Act</i> <i>Tour related to plumbing</i>	Westwood Tavern & Tap 1385 N Meacham Rd Schaumburg, IL
June 21, 2012	<i>Annual Golf Outing</i>	Hilldale Golf Club 1625 Ardwick Drive Hoffman Estates, IL

If you would like to present any of these topics or become a meeting sponsor, please contact Rick Butler at rbutler@lochinvar.com, 224 238.8515