

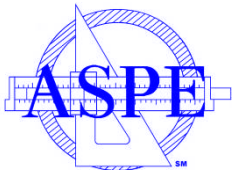


Chicago ASPENews



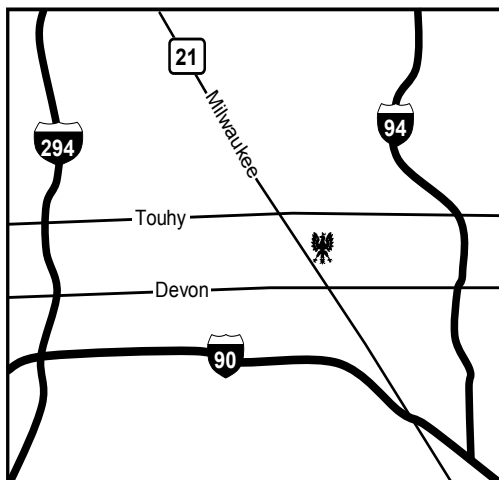
Chicago Chapter of the American Society of Plumbing Engineers
Vol. 40, No. 9 April, 2009

38th ANNUAL ASPE CHICAGO PLUMBING SHOW & TECHNICAL SEMINARS



Thursday April 16, 2009

White Eagle Restaurant; 6839 N. Milwaukee Ave.; Niles, IL
Seminars, Exposition, Dinner, Door Prizes
Plenty of FREE Parking



Over 200 Manufacturers and Representatives will be showing their engineered plumbing products. Show admission is **FREE!!!** Buffet dinner tickets will be available at the door on the day of the show or in advance (\$25.00/ticket) by mailing a check to:

Frank Sanchez, CPD
VP Legislative/ Product Show Chairman
Grumman/Butkus Associates
820 Davis Street; Suite 300
Evanston, IL 60201
Phone: 847 328.3555 x251; Fax: 847 328.4550
Email: fxs@grummanbutkus.com

11:30am - 4:30pm

- ♦ Technical Seminars (all earn ASPE CEU's; FOUR hours earn State of IL CEU's); **Cost - FREE AND free lunch - PLEASE RSVP to pkroll@metroddn.com**

3:30pm - 8:30pm

- ♦ 38th Annual ASPE Chicago Chapter Product Show; **Cost - FREE**

5:45pm - 7:00pm

- ♦ Buffet Dinner; **Cost - \$25**

Buffet Dinner Menu; 5:30pm - 7pm; \$25

- Bread and Butter — Chlebi Maslo
- Sauerkraut and Polish Sausage — Kapusta-Kielbasa
- Mushroom & Barley Soup — Gryszyby Krupnik Zuba
- Beef with Gravy — Pieczen Wolowa
- Coleslaw — Salata Kapusta
- Noodle & Chicken Livers — Kluski Watrobi and
- Mashed Potatoes — Kartofle Tluczone
- Vegetable — Jarzynny Pastry — Cjasto
- Roast Chicken — Kura Pieczona
- Coffee, Tea, Milk — Kawa, Herbata, Mleko

Local Chapters are not authorized to speak for the Society



PRESIDENT'S MESSAGE

Happy Spring! March's Meeting brought some warmth and sunshine into our lives! Craig Shannon of Deery-Pardue/Chronomite presented the Primer on Point-of-use Water Heaters and Mark Kaulas of Bornquist presented our main technical feature on **Solar Water Heating**. Thanks guys for sharing this information! It was very timely and informative, and since they both had a "green" connotation, they were perfect for St. Patrick's Day!

Thanks for the feedback! It helps us to know how to serve you better. Special thanks to those who RSVP'd and followed through with their commitment! If we could improve on this, we would be more efficient. **RSVP as soon as possible to Bruce Weiss, VP Technical! Email Chicago.ASPE.RSVP@gmail.com.**

THIS MONTH

Your Chicago Chapter is proud to present the 38th Annual ASPE Chicago Chapter Product Show and Technical Seminars! It will be Thursday, April 16 2009 at White Eagle Restaurant in Niles, IL and the seminars will run from 11:30am to 4:30pm. FREE seminars, FREE CEU's, FREE State of IL CEU's, FREE lunch, FREE Product Show, AND FREE door prizes! That's a super bargain! And if you want dinner, it's only \$25 for all that you care to eat! Such a deal! Please see additional information inside this issue! Frank Sanchez is the Product Show Chairman again this year; so contact him if you have any questions or comments. Thanks Frank and Phill Kroll (Co-chair)!



We already have quite a number of Exhibitor RSVP's and some are totally new to our show! If you are an exhibitor, be sure to get your paperwork and checks in ASAP **OR YOU MAY BE A SPECTATOR!**

We only have **ONE MORE** regular monthly meeting left this season! Don't miss it! **Election Night is in May!**

Thanks for your support! See you at the Product Show, April 16 at the White Eagle in Niles, Illinois! Please refer to the front page of the ASPE News and other articles in this issue for all of the details.

CPD REVIEW CLASS was a BIG SUCCESS

Jason and I presented the ASPE Chicago CPD Exam Review Class on Saturday March 14 at **Grumman/Butkus** in downtown Evanston, IL. We had 10 people in attendance including **2 people who flew in from St. Louis just for this class!** If you are planning to take the exam, this is the **PERFECT** way to target your studying energy in the right direction! Watch for more details prior to the next test date!

CPD Exam Will Be Held April 17 & 18, 2009

The Certified in Plumbing Design examination will be administered on Friday and Saturday, April 17 or 18, 2009 depending on available sites. The exam is an online proctored exam with approximately 200 possible testing sites across the US and Canada. The testing fee for the examination is \$375 for ASPE members, \$300 for ASPE members with PE, and \$625 for nonmembers or \$550 for nonmembers with PE. Download the **CPD Bulletin** for more information. <http://aspe.org/new/CPD/cpd.php>. **Registration closes April 3, 2009! So act NOW!!** If you are registered for the exam and want some practice questions, ASPE offers 30-question practice exams online for \$75. Go here for more info: <http://aspe.org/new/CPD/GetInfo.php>.

(continued on page 3)

CHAPTER OFFICERS

PRESIDENT

David DeBord, CPD, LEED AP
Environmental Systems Design
312 456.2359
ddebord@esdesign.com

VICE PRESIDENT TECHNICAL

Bruce Weiss, CPD, LEED AP
Affiliated Engineers
312 212.2022
bweiss@aeieng.com

VICE PRESIDENT LEGISLATIVE

Frank Sanchez, CPD
Grumman/Butkus Associates
847 328.3555 x251
fxs@grummanbutkus.com

VICE PRESIDENT MEMBERSHIP

Rick Butler
Lochinvar
815 477.9983
rbutler@lochinvar.com

TREASURER

Mark Mannarelli
Environmental Systems Design
312 456.2354
mmannarelli@esdesign.com

ADMINISTRATIVE SECRETARY

Natalia Dankanich
Grumman/Butkus Associates
847 328.3555 x208
nkd@grummanbutkus.com

CORRESPONDING SECRETARY

Jerry Fields
Luczak Sales
847 781.5100
jerry@luczak.com

AFFILIATE LIAISON

Dick Simms
Deery-Pardue & Associates
630 350.7575
dsimms@deery-pardue.com

EDUCATION CHAIRMAN

Dan Fagan, PE, CPD
OWP/P
312 960.8301
dfagan@owpp.com

NEWSLETTER EDITOR

Jason McDonald, CPD
Grumman/Butkus Associates
847 328.3555 x204
[jrm@grummanbutkus.com](mailto:jsm@grummanbutkus.com)

WEBMASTER

Jim Moynihan
Chicago Technical Sales
630 889.7121
CTSalesInc@aol.com

GOLF OUTING CHAIRMAN

Steve Triphahn
W-T Engineering, Inc.
847 895.3640
steve.triphahn@wtengineering.com

HISTORIAN

Donald Johnson

WEBSITE

<http://www.aspe.org/Chicago>
("C" is required)

PRESIDENT'S MESSAGE (continued)

Plan NOW to Attend the 2009 ASPE Technical Symposium

The *ASPE Technical Symposium* will be held Oct. 23-25, 2009 in Dearborn, Michigan. Intense educational sessions and fun special events will be included. The Engineered Plumbing Exposition (EPE) promises an array of exhibitors who will showcase the newest products in the industry. Attendees will have numerous opportunities to win prizes. Visit www.aspe.org for more updates.

Look for more info in future issues of the ASPE News as well as in PS&D and The Pipeline. And read the whole ASPE Newsletter! You're probably spending plenty of time indoors lately, so read the newsletter! You never know what you might be missing. Stay tuned for more details.

ANNUAL GRASS ROOTS BUDGET MEETING REVIEW

Sean Allard, Mark Mannarelli, and I (and Julius Ballanco of course) attended the ASPE GRBM at the ASPE business office right here in Chicago on Saturday March 21st, the first full day of Spring! That may not sound like much of a way to celebrate the Vernal Equinox but it was time well spent. It was the best attended GRBM ever! We had 23 online and about 12 or more in the office. People came all the way from California for this meeting. SO what is GRBM? It is our opportunity to review the ASPE National Budget prior to it being accepted by the National Board.



I won't bore you with all of the details, but here are some quick highlights:

1. Membership dues will **not** be increased at this time.
2. ASPE will work with anyone who is having hard times - they can request "hardship assistance" and they will work with you.
3. The ASPE webinars are great advertising opportunities for sponsors. If your company is a potential sponsor, jump on this opportunity.
4. ASPE's biggest push this year is on education...which is just what ASPE Chicago has been doing!
5. ASPE Research Foundation – within the next week or so, we will start seeing 2 white papers from the ASPE RF, which will be available for free download if you agree to return comments on them. More information can be found in the May issue of PS&D Magazine.
6. Go to www.Plumbingsafety.wordpress.com for some good plumbing safety information.
7. We need MORE volunteers for standards committees, etc. Mostly the same people volunteer all of the time. This is true locally as well as nationally.

OK! We can't be mucking around with this stuff all day! Get back to work! See you at the Product Show. If you have any questions about anything you see here, or **don't** see, please feel free to contact me at ddebord@esdesign.com. If you have any COMPLAINTS about ANYTHING, contact Frank Sanchez at fxs@grummanbutkus.com.

David DeBord, CPD LEED AP; President
ddebord@esdesign.com; 312 456.2359



PLUMBER OR PEDDLER?

Dave DeBord's recent quote of Dr. Albert Einstein is excerpted from the following tome in *The Reporter*, November 18, 1954, "If I would be a young man again and had to decide how to make my living, I would not try to become a scientist or teacher. I would rather choose to be a plumber or a peddler in the hope to find that modest degree of independence still available under present circumstances."

Something of note is that shortly after that statement, the Plumbers and Steamfitters Union in Washington, DC granted Dr. Einstein an honorary membership. I wonder what plumbing system he would have found most "relative".

Don Johnson, Chapter Historian



THE PRODUCT SHOW IS HERE!!!!

Exhibitors, if you have not registered for the Product Show or SOMEHOW managed to "misplace" your registration materials, PLEASE let me know immediately! We know that times are tough and we hope you will all show faith and come out to the Product Show. We are doing everything in our power to make sure there are lots of Engineers, Designers, Plumbers, Inspectors and everyone else there to see your products!

Registration deadline **WAS** March 27, 2009

(A \$50 late fee will apply after that date)

[Click here for a Reservation Form](#)

BOOTH SELECTION NIGHT

Date: Thursday, April 9, 2009
Time: 6:30pm
Location: Luczak Sales, Inc
1128 Tower Road
Schaumburg, Illinois 60173

2009 PRODUCT SHOW RAFFLE AND ADMISSION TICKET ONLY

THIS IS NOT A DINNER TICKET

ASPE CHICAGO CHAPTER

38TH ANNUAL PRODUCT SHOW
APRIL 16, 2009
3:30pm - 8:30pm

WHITE EAGLE BANQUETS & RESTAURANT
6839 Milwaukee Avenue; Niles, IL
(See Map on reverse side)

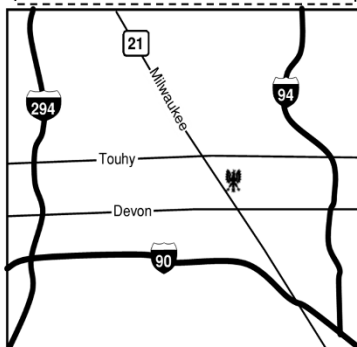
One Ticket per person. Must be present to win.

DROP IN RAFFLE BOX

P R O D U C T S H O W	Name:	_____	A D M I S S I O N O N L Y
	Company:	_____	
	Address:	_____	
	Phone:	() _____	
	email:	_____	

38TH ANNUAL ASPE CHICAGO CHAPTER PRODUCT SHOW APRIL 16, 2009

Seminars 11:30am to 4:30 pm



SEMINAR TOPICS WILL INCLUDE:

- Building Information Management - BIM
- 3D Coordination and Design Overview.
- Reclaimed Water and Water Reuse
- IPC 2009 UPDATES
- Booster Pumps- Variable Speed drives and Their Implications
- ADA Design Requirements
- Bariatric Plumbing Fixtures
- Commercial Plumbing Fixtures and Trim Selection Criteria
- Water Piping and Thermal Expansion
- Common Plumbing Errors and Mistakes
- Steam Fired Water Heaters and Control Valves
- Chemical Waste Systems and Tanks
- Fire Pump Controllers

ONE PER PERSON ONE PER PERSON
DOOR-PRIZE
SEE OTHER SIDE!

38th Annual ASPE Chicago Chapter Product Show and Technical Seminars

Thursday, April 16 2009 - White Eagle Restaurant – Niles, IL 11:30 am to 4:30 pm

ROOM 1

2009 International Plumbing Code Updates **Presented by Fred Grable, P.E. of ICC, Codes and Standards Department**

11:30 am -12:30 pm (1.0 hour)

Fred Grable, ICC Staff Engineer and former master plumber, brings extensive experience as both a plumbing contractor and engineer. He has nearly two decades of experience as an engineer for an industrial pressure piping manufacturer and in wastewater treatment equipment field services.

Fred will review the significant changes between the 2006 IPC and the 2009 IPC. He will cover items in Chapters 2 through 11, Definitions, Regulations, Fixtures, Water Heaters, Water Distribution, Sanitary Drainage, Indirect Waste, Vents, Traps and Interceptors and Storm Drainage. Make sure you bring your IPC copy and take plenty of notes.

Bariatric Fixture System Performance and Design Considerations

Presented by Pat McQuillan, of Zurn Engineered Water Solutions

12:45 pm – 1:45 pm (1.0 hour)

Pat McQuillan is the sales and marketing Manager for Strategic Accounts at Zurn Engineered Water Solutions. Pat has worked at Zurn for eight years and has been in the HVACR and plumbing industry for 20 years. Pat has a BSME from the University of Michigan, Ann Arbor, MI and an MBA from DePaul University, Chicago, IL.

This presentation gives those involved with healthcare building design insight on the capabilities and limits of bariatric fixture systems. Special consideration will be given to the design and retrofitting of bariatric patient rooms and some of the common design practices seen throughout the United States.

Reclaimed Water and Water Reuse - Latest Requirements

Presented by Julius Ballanco of JB Engineering

2:00 pm – 3:15 pm (1.0 hour)

Julius is well known throughout the country as one of the most knowledgeable experts in the plumbing industry. He is President of JBA, a renowned engineering and consulting firm in Indiana and current ASPE Society President.

Before developing any reclaimed water or water reuse system, it is important for the plumbing engineer to understand the latest requirements regulating these reclaimed water and water reuse systems. Within the past year, new documents have been published regarding the requirements for reclaimed water and water reuse systems. This program will review the new requirements and discuss how this will impact the design of these systems. Included will be a discussion of systems that have gained approval of the new requirements.

BIM / Revit: Plumbing Engineering and Construction Coordination

Presented by CADworks

3:30 pm – 4:30 pm (1.0 hour)

CADworks has provided services and products to architectural and engineering firms, and to the AEC industry at large for two decades. They bring this resultant success forward through the evolution of Computer Aided Design to Building Information Modeling. CADworks will address a spectrum of topics related to the innovative Building Information Management Software (BIM). They will provide an overview of Revit and how it is applied to Plumbing Engineering and construction coordination. Through the use of innovative technology, BIM strives for better MEP engineering and a better built environment. There will be tons of supporting visuals. Please note that this is an overview class and not a hands-on presentation.

ROOM 2

State of Illinois Continuing Education Credits are available for these seminars only

Water Piping and Thermal Expansion

Presented by Jim Richter of The Metraflex Co.

11:30 am -12:30 pm (1.0 hour)

In the 29 years Jim Richter has been working for a manufacturer of expansion joints, check valves and flexible pump connectors, he is constantly surprised by ways to make mistakes in the design and application of these products. There is nothing like a lawsuit to further your knowledge of the limits of product performance. Jim has a number of patents for products used in the industry as well as many inventions no one needs. Jim will discuss the effects of hot water expansion on plumbing systems and what items can be incorporated into plumbing hot water systems to protect piping, equipment and installations. Jim will touch on seismic requirements and will discuss mechanical expansion joints and couplings and convention pipe expansion loops.

Common Plumbing Errors and Mistakes

Presented by: George B. Swietczak

Plumbing Inspector for the Village of Villa Park, IL

12:45 pm – 1:45 pm (1.0 hour)

George started in the plumbing industry as a Local 130 apprentice in 1968, becoming a journeyman in 1971. In 1990 he was chosen by Local 130 and The United Association and The US Department of Labor to lead the instruction of Poland's Solidarity Plumbing Instructors. He is also a plumbing program instructor for the Associated Building Contractors Association since 1992, having taught each and every level I through IV. Ninety nine percent of the students from his classes have received their plumber's licenses on their first attempt.

The seminar will address the common problems that George has witnessed in his capacity as a plumbing inspector. He will discuss incorrect piping installations on both plans he reviews and installations he inspects. George will provide insight into common code violations that can be avoided with proper knowledge of the Illinois Plumbing Code guidelines.

Booster Pumps- Variable Speed Drives and their Implications on Booster Pumps

Presented by Victor Rilling of Advanced Mechanical Technologies

2:00 pm – 3:15 pm (1.0 hour)

Victor Rilling is president of Advanced Mechanical Technologies located in Phoenix, Arizona. Victor has been active in the plumbing and HVAC industry since 1995 and has owned his own manufacturer's representative firm, the mechanical room since 1999. It has since grown into Advanced Mechanical Technologies, a company that manufactures its own plumbing and HVAC packaged equipment. Variable speed drives have become common place in booster pumps and in fact have become the standard. As the pump drives have been updated, this has had an effect on the overall pumping system. He will cover why hydro-pneumatic tanks may no longer be required and the amount of start/stop cycles that the motors see and the effect this has on the system.

Commercial Plumbing Fixtures and Trim Selection Criteria

Presented by Jeremy Cantor- Delta Faucet Company

3:30 pm – 4:30 pm (1.0 hour)

Jeremy Cantor has been working in the plumbing industry for the past three years. He is currently Delta Faucet Company Manager for the Chicago Area, working closely with Architects and Engineers.

This presentation will explore commercial products for plumbing and will demonstrate what to look for when specifying commercial grade fixtures. Topic areas will include standards, fixtures and trim, as well as electronics, water conserving, and healthcare related products. The overall intention of this presentation will be to ensure that the specifying community has a better understanding for commercial grade plumbing fixtures.

ROOM 3

Accessibility Seminar: Codes and Requirements

Presented by Ron Grabski of One Source Mfg Reps

11:30 am -12:30 pm (1.0 hour)

Ron has been in the Plumbing Industry for 30 years and possesses a BS in Business from Eastern Illinois University and an MBA from the Keller Graduate School of Business in Chicago (1983). He is currently a manufacturers' representative and a consultant to the industry with numerous publications. Ron has served on the Exhibitor's Board for ASPE and has been Chairman of the Fixtures Committed for the Plumbing Manufacturer's Institute.

This seminar will address the changing demographics of the aging population and how it affects a variety of codes, regulations and requirements. It will cover what specifying engineers need to know about accessibility requirements in senior citizen housing, hospitals and retirement facilities.

Chemical Waste Systems and Tanks

Presented by Charlie Ismert of Schier Products

12:45 pm – 1:45 pm (1.0 hour)

Charlie Ismert is the Sales & Marketing Manager with Schier Products (New Berlin, Wisconsin). Charlie graduated from the University of Kansas Journalism School with a degree in Strategic (Marketing) Communications. He has been with Schier Products for over five years. Since 1972, Schier Products has been pioneering plumbing and wastewater products for drain line purity. Family-owned and operated, Schier manufactures a quality line of grease interceptors, oil separators, solids interceptors, chemical waste tanks and stainless steel floor drains.

Charlie will explain when and why we need Chemical Waste Tanks, the importance of pH, compare dilution vs. neutralization and will cover limestone neutralization. He will analyze central vs. local installation, materials, sizing, cover options, venting and maintenance of chemical waste systems. Also, we will discuss alternative applications, like neutralization systems and decontamination holding tanks.

Steam Fired Water Heaters: Controls and Applications

Presented by Norm Marshall of Patterson-Kelley

2:00 pm – 3:15 pm (1.0 hour)

PK pioneered the concept of semi-instantaneous water heaters over 50 years ago and continues to evolve and refine its models, which focus on a small heater that produces high hot water output at a closely controlled temperature.

This seminar will cover storage-free water heaters; since there is no storage tank, standby heat loss is minimized and floor space is reduced significantly. This can become handy when designing a mechanical room, and utilize that space for more profitable purposes.

Norm will talk about different applications and requirements for semi-instantaneous water heaters and will analyze the different controls available. He will compare 1/3-2/3 valves vs. fully modulating control valves and will explain its appropriate applications on HVAC and Domestic Hot Water Systems.

Fire Pump Controllers: Starting Methods and Specification Pitfalls

Presented by: Jim Moynihan of Chicago Tech Sales / Firetrol

3:30 pm – 4:30 pm (1.0 hour)

Jim is the President of Chicago Technical Sales, Inc., the manufacturers' representative for Firetrol fire pump controllers. Jim has spent 30 years in the pump and controls industry. Since 1997, Jim has concentrated on Fire Pump Controllers.

The seminar is designed for the specifying plumbing / fire protection engineer. Jim will cover the basics of fire pump motor starting methods, common specification pitfalls and coordination with your electrical engineer. Jim will talk about the various motor starting methods, why they are used, when they are used and the relative cost impact. He will also cover common specification pitfalls including requirements specific to NFPA-20, the City of Chicago and IDPH.

Lunch will be provided AT NO COST to those seminar attendees who stay for all four seminar sessions AND the Product Show. Also, you will receive a free raffle ticket. Last year we gave away a GPS Navigation System. No purchase necessary but must be present to win.



MARCH MEETING

Primer Recap

Point-of-use Water Heaters - Chronomite; Presented by Craig Shannon of Deery-Pardue & Associates

Craig Shannon of Derry-Pardue gave a very nice informal primer on Chronomite point of use tankless water heaters. He was on hand to answer questions and show off the product with samples in both chrome and white finishes. Chronomite uses state-of-the-art technology; the microprocessor meets the users' demands for superior performance with accurate, preset output temperatures, while being efficient and cost effective.

Main Technical Presentation Recap

Solar Water Heating; Presented by Mark Kaulas of Bornquist

Mark gave a riveting presentation on solar domestic water heating. The presentation covered the full breadth of the latest technology available for heating domestic water along with basic design guidelines on system sizing and design. He also provided the audience with several of his lessons learned in installing this relatively new technology. Mark will also be making available a limited portion of his power point presentation that we will post on the ASPE Chicago Chapter website when it becomes available.



WHAT'S GOING ON WITH THE PRODUCT SHOW?

Now more than ever your support and attendance is needed.

This is turning out to be a most challenging year for our industry and that applies to everyone who is involved in it. There is not an Engineer or Affiliate who has not been affected by the economic downturn. **ASPE and its members need to support each other now more than ever to show the strength of our industry and profession.**

It is important that Engineers, Plumbers, Building Engineers, Code Officials and everyone else who designs or uses plumbing products come to this show. Now is the time to view the latest products in the industry and network with your fellow professionals. On the same token, I encourage all our Affiliates to get a booth and show your wares and rub elbows with your customers, present and possibly future.

The Chicago Chapter has been going strong for 40 years and for 37 of them we have had a product show so be sure and join us for the 38th show.

Bruce Weiss, CPD LEED AP; Vice President Technical
bweiss@aeieng.com; 312 212.2022



DEAR FELLOW AFFILIATES

The **ASPE CHICAGO PRODUCT SHOW** is just around the corner. By now you should have received your packets containing your supply of **PRODUCT SHOW INVITATIONS/DINNER TICKETS**. We need to work together and get these in the hands of our Engineer friends between now and the Product Show to insure good attendance. **If you run out and need more, please contact me and I will see you get them.**

Thank you,

Richard Simms, Affiliate Liaison
dsimms@deery-pardue.com; 630 350.7575

MARCH 2009 MEETING ATTENDANCE

The following list of individuals attended the March 2009 meeting of the ASPE Chicago Chapter. In accordance with ASPE Society policy, these individuals are entitled to 0.75 RU's towards the required 24 RU's needed every two years to maintain CPD registration. Meeting attendance is also recognized by the Illinois Department of Professional Regulation to count as 1 PDH towards the required 30 PDH's needed every two years to renew Professional Engineering licenses.

Tom Babcock	Griff Gehrke	Ed Lichner	Paul Riedinger
Mike Belczak	Tom Hamilton	Mark Loth	Dennis Richards
Julius Ballanco	Ernest Havran	Greg Luczak	Javier Rodriguez
Scott Baron	Berit Herdman	Jim Majerowicz	Jason Romano
Brendan Bates	Tom Higgins	Mark Mannarelli	Ben Rubach
Matt Brickey	Herb Hymen	Nevo Martelli	Frank Sanchez
Tate Brummitt	Mike Imaoka	Joe McCleery	Chris Sbarbaro
Jeremy Cantor	Bob Jackson	Jason McDonald	Craig Shannon
Todd Cooper	Don Johnson	Paul McLafferty	Ryan Smith
Mike Cusack	Mark Kaulas	Jack Miller	George Swietczak
Mike Cwanek	E.J. Kedzie	Greg Nagrant	Brandon Taylor
Andy Daley	Patrick Kennedy	John Nieman	Robert Thompson
Mike Daley	Richard Klaess	David Nowacki	Jack Ucheal
Tony Dauginas	Robert Kogut	Jim O'Neil	Bruce Weiss
Jose DeAvila	Larry Konopacz	George Pagach	Chris Wisinski
Dan Fagan	Phill Kroll	Dave Pardue	Mel Withrow
Jim Fenny	Val Kurdaiev	Dan Patt	Marion Wnuk
Otton Finiewicz	David Lehman	Howard Pawlak	Peter Wu
Bryan Fonseca	Lindsey Lehman	Mike Ponx	
Albert Gehrke	Joe Leonard	Kerbie Reader	

This printing constitutes our record of who was in attendance. We apologize for any misspelling of names and ask that for future sign-ins, please print legibly. Thank You!



HELLO AGAIN FROM YOUR FRIENDLY TREASURER

Spring has finally arrived. It has been a long winter and it is now time for all good ASPE members to come out and participate in the annual **ASPE PRODUCT SHOW**. The Chicago Chapter is winding down another year, so only one more meeting (MAY) before the summer. So get involved and come out to the May meeting or come out and support your favorite manufacturers and representatives at the Product Show. Let us keep the Chicago Chapter the best and strongest through this time of economic change.

More water saving tips and facts:

- **In Japan, some urinals have voice-activated flush mechanisms.** According to Wikipedia, these urinals respond to as many as 30 different languages and several terms, including "fire."
- Is it possible for me to drink water that was part of the dinosaur era? Yes - water is constantly recycled. Makes you think.....?

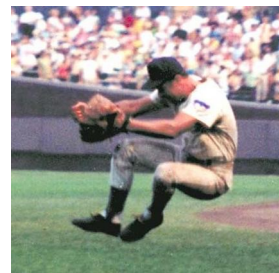
For all you baseball fans:

The average lifespan of a major league baseball is seven pitches.

Thanks,

Mark G. Mannarelli, Treasurer

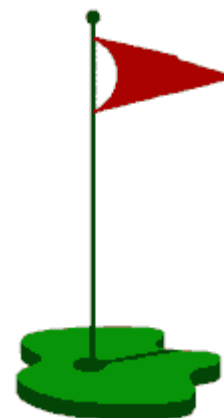
mmannarelli@esdesign.com; 312 456.2354



GOLF OUTING 2009

This year's outing will be held on **June 19, 2009** at Hilldale Country Club in Hoffman Estates. We will start with a "Shot-Gun" tee-off at 8:30am (**please** note the time – this is the **start** time, **not** the "show-up" time). Coffee, juice and rolls will be served from 7:30am–8:30am in the snack shop (sponsored by **Luczak Sales**) and beverages will be served throughout the day. There will also be special displays and activities as you play the course. As in past years, lunch will be served between the 9th and 10th holes (sponsored by **Metropolitan Industries**). Shower and locker facilities are available in the clubhouse so you can freshen up after your round. Cocktails (cash bar) will begin at 4:00pm with a buffet style dinner to follow at 5:00pm.

Reservation forms were mailed out to all Affiliate members at the end of March. As you know, because of the "Shot-Gun" start, we are limited to 152 golfers; so when this limit is filled, we cannot accept any more golfers. Reservations will be accepted on a "First Come-First Served Basis". Each Manufacturer, Sales Rep., Supplier, etc. is limited to two (2) foursomes. **Don't delay in returning the reservation form.** You don't want to be left out!



Steve Triphahn, Golf Outing Chairman
224.293.6333

MEMBERSHIP UPDATES

Remember that if you change companies, email addresses, personal information and the like, PLEASE contact your VP Membership Rick Butler ASAP (rbutler@lochinvar.com). This will ensure that you keep getting your ASPE mailings and that your directory information will be accurate. Thanks!

ASPE CHICAGO WEBSITE

When you have a couple free minutes, check out the ASPE Chicago website - www.aspe.org/Chicago. Not only will you see the current newsletter and the history of the Chapter, you will ALSO see line cards for many of our sales rep members, manufacturer and rep portions of our directory and much more! Check it out today!



2009 RIDE TO THE ROCK

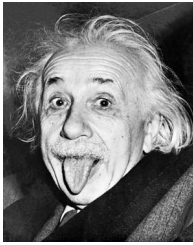
The Ride to the Rock IS back! Yes, once again, ASPE Chicago is joining forces with the Dads' Chapter of the Leukemia Research Foundation (LRF) and the LRF itself. This year will be the fourth year of this fantastic charity motorcycle rally. In the first three years of Ride to the Rock, between raffles, donations and ASPE Chicago's 50/50 raffles, we have helped raise more than **\$11,000!**

This year features a name change. In honor of the Ride to the Rock's founder, the new name is the **Kenneth G. Wentink Memorial Ride to the Rock**. We felt it was a fitting tribute to Ken who served the Chapter and Society so well for so many years AND created this rally.

The Ride to the Rock will be on **Saturday July 18** with a rain date of July 19. Breakfast and lunch will both be provided and there will be multiple raffles and lots of fun. We are shooting for 100 bikes this year! There is no conflict with NASCAR (we will be a week AFTER the races) nor is there a conflict with Sturgis (a couple weeks later). Start spreading the word and plan on joining us on July 18 for the ride from Glen Ellyn to Starved Rock State Park.

We are still working on online registration – it will be ready SOON. And MANY more details will follow. If you are interested in participating in the Ride to the Rock, whether you want to ride, help out, donate or whatever, please contact Jason McDonald or send an email to ridetotherock@gmail.com. Thanks in advance for your support!!

Jason McDonald, Ride to the Rock Co-Chair
jsm@grummanbutkus.com; 847.328.3555 x204



"I should've been a plumber."
- Albert Einstein

AS I KNOW IT: REVIEW OF BASIC STORM PIPE SIZING

The first thing we need to know is what rainfall rate in inches per hour, that we are using, based on the local authorities having jurisdiction. The numbers in the following examples are based on a 4" per hour rainfall rate, and may not apply to your project! But the same principles will apply.

HORIZONTAL PIPE SIZING

Diameter of Drain, Inches	Slope					
	1/8 inch		1/4 inch		1/2 inch	
	sq. ft.	gpm	sq. ft.	gpm	sq. ft.	gpm
3	822	34	1,160	48	1,644	68
4	1,800	78	2,650	110	3,760	156
5	3,340	139	4,720	196	6,680	278
6	5,350	222	7,550	314	10,700	445
8	11,500	478	16,300	677	23,000	956
10	20,700	800	29,200	1,214	41,400	1,721
12	33,300	1,384	47,000	1,953	66,000	2,768
15	39,500	2,473	84,000	3,491	119,000	4,946

VERTICAL PIPE SIZING

Size of Conductor or Roof Leader	Maximum Projected Roof Area	Hydraulic Capacity
inches	sq. ft.	GPM
2	725	30
2 1/2	1,300	55
3	2,150	85
4	4,600	190
5	8,373	348
6	13,000	560
8	29,000	1,200
10	52,000	2,200
12	83,000	3,500

Rainfall Calculations for Surface Areas Intensity/Duration

- Measured in Inches per Hour
- Model codes have local Rainfall Rates listed in Appendix.
- Flow Rate = Coefficient of Runoff x Intensity x Area

$$Q = C \times I \times A$$

Runoff coefficients are listed in *ASPE Data Book*.

Table 2-6

Roofs = .75 to 1.0 C value

Pavement = .70 to .95 C value

Grass/Lawns = .10 to .35 C value

The spreadsheet below is very simple to create and can be used for calculating CFS and GPM flow rates (left side of sheet) or annual rainwater in CF and gallons (right side). Note that we plugged in 2 different C values on the left side. This is to see the impact of different surfaces on the flow rate. The calculations on the right do not require a C factor because we are looking for the annual total of rainfall, not the flow rate. Please refer to the *ASPE*

DR. DAVE'S EZ-DUZIT RAINFALL CFS GPM CALCULATOR										
Area (SF)	Acres	Rainfall Rate (In/Hr)	Run-Off Coeff.	CFS	GPM	Area (SF)	Acres	Annual Rainfall (In)	Annual Rain (CF)	Annual Gallons
30,000	0.69	4.00	0.95	2.62	1,174.63	30,000	0.69	34.02	85,050	636,174
30,000	0.69	4.00	0.60	1.65	741.87	30,000	0.69	34.02	85,050	636,174

PEDH's and the appropriate code book for your project for further information.

Moral of this story: Rain is more water than you might think!

David DeBord, CPD LEED AP; President
ddebord@esdesign.com; 312 456.2359

2008-2009 ASPE Chicago Chapter Meeting Schedule

DATE	PRIMER	TECHNICAL PRESENTATION	LOCATION
September 18	Zero Power Fixtures; Repco Associates	Plumbing Fixtures and LEED; Kohler Company	<i>LaVilla 3638 N Pulaski Chicago</i>
October 16	Water Heater Controls; Luczak Sales	High Efficiency Water Heaters - When is the Proper Application?	<i>The Parthenon 314 S Halsted Chicago</i>
November 20	Medical Gas Inlets/Outlets; Ohio Medical	Booster Pumps - Variable Speed Drives and their Implications on Booster Pumps; Advanced Mechanical Technologies	<i>Rosewood Restaurant 9421 Higgins Rosemont, IL</i>
December 18	Booster Night; <i>Special Entertainment</i>		<i>LaVilla 3638 N Pulaski Chicago</i>
January 15	Acid Waste and High Purity Piping; Zurn Acid Waste Piping	Alternative Venting Methods; George Swietczak, Village of Villa Park Plumbing Inspector	<i>Rosewood Restaurant 9421 Higgins Rosemont, IL</i>
February 19	Sprinkler Heads and Cover Plates; Viking	Clean Agent Fire Systems and Proper Room Design; Reliable Fire Equipment	<i>The Parthenon 314 S Halsted Chicago</i>
March 19	Point-of-use Water Heaters; Chronometer & Deery-Pardue	Solar Water Heating; Bornquist	<i>LaVilla 3638 N Pulaski Chicago</i>
April 16	Technical Seminars	38th Annual ASPE Chicago Product Show	<i>White Eagle 6839 Milwaukee Ave Niles</i>
May 21	Elections	Vacuum Plumbing Systems; Deery-Pardue	<i>The Parthenon 314 S Halsted Chicago</i>
June 19	Annual ASPE Chicago Golf Outing		<i>Hilldale Golf Club 1625 Ardwick Drive Hoffman Estates</i>
July 18		Kenneth G. Wentink Memorial Ride to the Rock	 <i>Chicagoland to Starved Rock</i>