



Chicago ASPENews



Chicago Chapter of the American Society of Plumbing Engineers
Vol. 42, No. 1 August, 2010

Proposed 2010-2011 ASPE Chicago Meeting Schedule

PRESENTERS NEEDED!

Date	Primer	Technical	
September 16, 2010	<i>Oil Interceptors (Environmental Impact of Oil Spills)</i>		<i>Chief O'Neill's Pub 3471 North Elston Ave. Chicago, IL</i>
October 21, 2010	<i>Rain Water Harvesting</i>		<i>Westwood Tavern & Tap 1385 N. Meacham Rd. Schaumburg, IL</i>
10/30/2010 - 11/3/2010	<i>ASPE Convention and EPE http://aspe.org/2010ConventionAndEPE</i>		<i>Pennsylvania Convention Center, Philadelphia, PA</i>
November 18, 2010	<i>Code Updates</i>		<i>La Villa Restaurant 3632 N Pulaski Rd. Chicago, IL</i>
December 16, 2010	<i>Booster Night Special Entertainment</i>		<i>La Villa Restaurant 3632 N Pulaski Rd. Chicago, IL</i>
January 20, 2011	<i>Proposed Joint Meeting</i>		<i>TBD</i>
February 17, 2011	<i>Copper Systems: Industry Update and Applications</i>		<i>The Parthenon 314 S Halsted Ave. Chicago, IL</i>
March 17, 2011	<i>Plumbing and Kitchen Design</i>		<i>Chief O'Neill's Pub 3471 North Elston Ave. Chicago, IL</i>
April 21, 2011	<i>40th Annual ASPE Chicago Product Show and Seminars</i>		<i>White Eagle - 6839 N. Milwaukee Ave. Niles, IL</i>
May 19, 2011	<i>Fire Protection Systems - NFPA 13 Updates</i>		<i>Oak Brook or Schaumburg</i>
June 17, 2011	<i>Annual Golf Outing</i>		<i>Hilldale Golf Club 1625 Ardwick Drive Hoffman Estates</i>

If you would like to present any of these topics or become an official Meeting Sponsor, please contact Frank Sanchez, CPD at fxs@grummanbutkus.com, 847.316.9251

VICE PRESIDENT TECHNICAL

Dear ASPE Members,

First of all, I would like to thank you for the opportunity to serve as the Vice President Technical for the 2010-2011 term.

As you can see we are starting to put together a list of proposed seminars and I have selected a few locations.

If you would like to present any of these topics or become an Official Meeting Sponsor, please give me a call.



Regards,
Frank Sanchez, CPD
ASPE Chicago Vice-President Technical
fxs@grummanbutkus.com
847 316.9251

ALL THINGS ASPE

DEFINITIONS

You will be seeing a number of different words that mean the same thing in this newsletter. So, to help you with this, we offer you the following definitions:

- ASPE Chicago Regional Chapter = ASPE Chicago = Chicago Chapter
- ASPE Convention and Engineered Plumbing Exposition = Convention and EPE = Convention = EPE
- ASPE Chicago Product Show = Product Show
- ASPE National = Society = ASPE
- ASPE Technical Symposium = Symposium



KEEP YOURSELF CURRENT

Through our lives we move to new homes, we change Internet providers, we change jobs and so much more. Many of our ASPE members are even currently looking for work thanks to the bad economy. We need your help to help US (both the Chicago Chapter AND Society) keep in touch with you.

A lot of you have been contacted saying that your membership is about to be revoked because you got two or three notices and did not respond. In fact, some of you are no longer members and don't even know it. Quite often, we are told that you didn't even receive anything from Society. This is a HUGE reason why we need you to keep us updated – WE WANT YOU TO REMAIN AN ASPE CHICAGO MEMBER!!

So, when you move (home or work) or if you change email addresses, please contact our Vice President Membership Mark Mannarelli at mmannarelli@esdesign.com or 312 456-2354.

Thanks to you, it works for all of us.....

ASPE CONVENTIONS

In the fall of every even numbered year, Society (ASPE National) puts on the **ASPE Convention and Engineered Plumbing Exposition**. This year's Convention will be in Philadelphia, PA from October 30 through November 3. More information is here - <http://aspe.org/2010ConventionAndEPE>. The basic format of this 5-day extravaganza is business meeting, welcome party, exposition, seminars and banquet.

In the spring of each even year, ASPE Chicago elects delegates to represent the Chicago Chapter at the **Business Meeting** where 300-plus delegates from ALL the chapters and Past Society Presidents will vote on ASPE business including bylaw (ASPE's "constitution") amendments and Society Officers (Region Directors, VP's and President). This year's business meeting will conclude Monday around noon with a keynote speech by Vince Papale who many of you know played for the Philadelphia Eagles and was portrayed by Mark Wahlberg in the movie "*Invincible*".

Sunday night of the Convention is traditionally the **Welcome Party**. All convention registrants are invited to a party. This is generally an hors d'oeuvres and cash bar event and has been held at such cool local spots as Billy Bob's Texas in Fort Worth, the Rock and Roll Hall of Fame in Cleveland and the Long Beach Aquarium of the Pacific (VERY cool!) The 2010 Convention Welcome Party will be held at the Independence Visitor Center in Philadelphia (<http://www.independencevisitorcenter.com/>). It's just a short walk from the Liberty Bell and Independence Hall. Again, pretty cool!

After Monday's closing of the business meeting and keynote speech, the **Exposition** will officially open. Kids, if you've never been to the ASPE Exposition, you HAVE to go at least once in your life! Think of the best ASPE Chicago Product Show you've been to (something in our eyes is pretty darned good and professional) and multiply it by TEN! Okay, maybe even MORE! It's true – this is an amazing show and as I have said before, it makes me VERY proud to be an ASPE member.



Education is one of the most beneficial things that ASPE has to offer each of us both on the Society and Chapter levels. The Convention offers several hours of **Seminars** carrying ASPE accredited CEU's as part of your Convention registration. By the way, they will have scanners at the entrance to the Exposition that will scan your badges so you get CEU's for being on the show floor! Anyway, back to the seminars. The seminars are high quality and are presented by folks from around the country and

around the WORLD! I believe I saw something that said if you are on the Exposition floor for the maximum hours and attend all seminars possible, you could earn upwards of **10-hours of continuing education**. Not bad, huh??

The last evening (Tuesday) of the Convention is generally the **ASPE Banquet**. Everyone dresses up real nice and has a good dinner. Also, there will be some special ASPE awards presented and then music and dancing afterwards. This is really a good time and a nice way to unwind (and possibly kill a few brain cells) after the days of business meetings, product show and seminars.



ASPE CONVENTIONS (continued)

I can share good news with you – if you are an ASPE member and register for the Convention by September 17, you can get ALL of this for **\$695!** This is a BARGAIN!! If you get a coworker or two (all ASPE members) to go as well and register by September 17, your registration goes down to only **\$625** each! Now, if you bring your **BOSS**, he/she will get in FREE! There are a couple caveats here on the boss promotion – your boss must either not be an ASPE member OR be an ASPE member who has not been to an ASPE Convention since at least 2004. So, please keep that in mind but PLEASE bring your boss and show him/her just what ASPE has to offer. Register today - <http://aspe.org/sites/default/files/webfm/2010Conv/2010ConventionRegistrationForm.pdf>. You can also register online – that's what I did.

As you can see, the ASPE Convention and Engineered Plumbing Exposition (EPE) has a lot to offer. There is definitely more going on and at a far grander scale than at our Chicago Chapter Product Show held each April. Our show is more of a mix of national manufacturers and local representatives. We feel we offer the best Chapter Product Show in all of ASPE. Our Product Show Committee takes great pride in the show we put on and rightfully so. If you haven't been in awhile or even if you come every year, please mark your calendars now for **Thursday April 21, 2011!** Admission is always free and there are always plenty of door prizes. There will be more on our Product Show later in this newsletter. Speaking of door prizes, the EPE in Philadelphia will have LOTS of door prizes including things like laptops, net book computers and more. It will be WELL worth your while to spend some time on the EPE floor. They will even have lunch available just to keep you there!



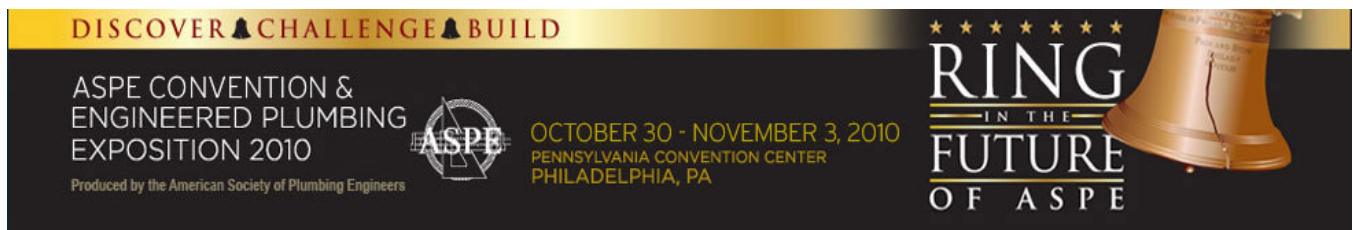
ASPE CONVENTIONS (continued)

Last thing about the ASPE Convention - there are reasonable airfares available to Philadelphia (PHL) and ASPE has arranged some good hotel rates at hotels VERY close to the Convention Center. Please use ASPE's housing form to register for **hotels** - <http://aspe.org/sites/default/files/webfm/2010Conv/2010ConventionHousingForm.pdf>. Online registration is also available. I have been asked by several people about making hotel reservations via Expedia, Hotels.com or some other discount website. Although you are free to do whatever you want, I ask that you book your rooms through ASPE. For ASPE to get good rates, they have to guarantee a certain number of room nights (much like at a Chapter meeting where we have to guarantee a minimum number of dinners). If ASPE does not meet these minimums, they will be charged a hefty penalty that will eventually be passed on to all of us. So, it is in all of our best interest to go through ASPE's housing. And if you are wondering, at ASPE Chicago meetings when we have come in under our minimum dinners, we HAVE had to pay for those dinners anyhow even though the food was never eaten. Likewise, we are sometimes penalized for having too many OVER our guarantee. This is why it is so important to RSVP!!

Okay, VERY last thing.... you can bring a **guest or spouse** to the Convention with you for a very reasonable fee. This means that he/she will be able to walk the Exposition floor with you and go to the Welcome Party and Banquet with you. ASPE is also offering quite a few day trips/excursions around Philadelphia for guests/spouses and I would guess for those of you who do not want to attend seminars or simply want to see the sights. These trips are all listed on the registration form as is the spot where you register your guest/spouse.

As I said, I think all ASPE members need to attend at least ONE Convention. There is a lot to see and do. And something I have not mentioned already, there are LOTS of networking opportunities. You can make some new friends from around the country (and world). And never know, maybe you will run across an old friend you haven't seen in years!

We hope to see you in Philadelphia this fall!



DISCOVER CHALLENGE BUILD

ASPE CONVENTION & ENGINEERED PLUMBING EXPOSITION 2010
Produced by the American Society of Plumbing Engineers

ASPE

OCTOBER 30 - NOVEMBER 3, 2010
PENNSYLVANIA CONVENTION CENTER
PHILADELPHIA, PA

RING
— IN THE —
FUTURE
OF ASPE

The banner features a gold bell on the right side.

ASPE TECHNICAL SYMPOSIA

So, the autumn of each even numbered year has the ASPE Convention and EPE. What about the odd numbered years? Well, the odd numbered years offer the **ASPE Technical Symposium**. In fact, one of the most successful was held in Chicago in October, 2005. Were you there? A lot of you WERE!

The Symposium offers us (ASPE members and non-members alike) 2½ days of **education**. There are no frills – this is about education and lots of it! There are at least 10 hours of ASPE accredited continuing education (CEU's) available. It might even be MORE than 10 hours.

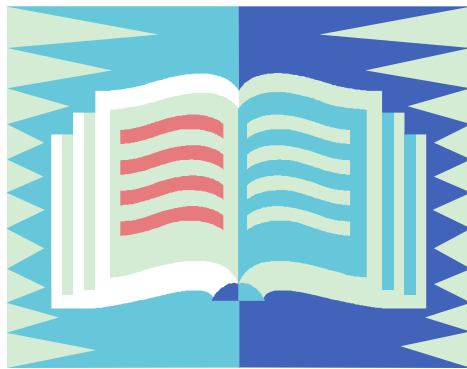
The Technical Symposium offers you another inexpensive way to get those oh-so-valuable CEU's at top quality seminars given by top quality instructors. The big difference between the seminars at the Convention and the seminars at the Symposium is this – Convention seminars are usually about an hour and fifteen minutes long and many are informational. The seminars at the Symposium are often two hours long or more and offer more of a “**workshop**” experience. Rather than learning *about* something, you often have the opportunity to learn how to *do* something.

Good news we can share about the 2011 Symposium.... it is in **Orlando, FL**! It's true! ASPE has negotiated some excellent room rates at the Buena Vista at Disney World. Yes, this means that not only do you have to go to the Symposium, you **HAVE** to take the whole family! Stay tuned for registration information coming probably late next spring.

In case you do not know, the Chicago Chapter also offers some excellent seminars. Our annual **Product Show** held each April is kind of a combination of ASPE's Engineered Plumbing Exposition (EPE) and the Technical Symposium. We have a quality product show highlighting hundreds of products. But before that starts, we have been offering 4 hours of continuing education (12 1-hour seminars total). And for the past few years, we have been offering 4 of those hours with State of Illinois CEU's to help out our plumber and inspector friends. Oh yeah, the whole day is free including lunch for seminar attendees. Not too shabby, huh?

So, mark your calendars for **Thursday April 21, 2011** for the ASPE Chicago Product Show at the White Eagle in Niles, IL and for late **October, 2011** for the ASPE Technical Symposium in Orlando, FL.





PUBLICATIONS

ASPE has LOTS of handbooks, reference books and the like to offer you as an ASPE member. ASPE even has its own magazine.

Plumbing Systems & Design (PS&D)

Each month, ASPE sends out its award winning magazine full of technical articles and information on new and developing products. This really is a great magazine and the subscription cost is included in your membership.

Plumbing Engineering Design Handbooks (PEDH)

Each year, ASPE issues each member a new volume (there are 4 volumes total) of the PEDH. The next one in line for us will be Volume 2 *Plumbing Systems*. As with PS&D, the cost is included in our annual membership dues. With the *PEDH* and *PS&D* both, there are **writing opportunities** for ASPE members. In fact, the 2008 edition of Volume 4 Plumbing Components and Equipment was rewritten by the Chicago Chapter! Except for three chapters (two of which were edited/ rewritten by a friend from the Wisconsin Chapter) the Chicago Chapter edited and/or rewrote all the chapters! Pretty cool, huh? If you are interested in doing some technical writing in either the *PEDH* or *PS&D*, just contact Society VP Technical Bill Hughes (aspevpt@aspe.org) and I am sure he will be happy to have your help.

Hunter Papers

Society just published *The Original Hunter Papers: The Foundation of Plumbing Engineering*. Now, this is something really cool that I plan to have on my bookshelf very soon. ASPE got its hands on some of the original papers written by Dr. Roy B. Hunter who laid out much of what we do as plumbing engineers today. This is a piece of history that I think should be in all our libraries. Okay, sure, maybe I am a nerd for saying that. But, I find it really neat and look forward to reading these. You can order from the ASPE Store on ASPE's website – www.aspe.org.

Handbooks

There are several other handbooks and technical publications published by ASPE. Included are books on pharmaceutical facilities, domestic water heating, the Tables book (of which ASPE Chicago still has a few copies that we can offer you at a discounted rate), the Steele books and much MUCH more. Take a look in the ASPE Store to see these and the other publications offered by ASPE. There is usually a hefty discount for ASPE members.



ASPE WEBSITE

You have seen several references to ASPE's website in this newsletter – www.aspe.org. There is literally a ton of information available to you on that website.

Contact Information

The current Society Board of Directors (<https://aspe.org/BoardOfDirectors>) and Staff (<https://aspe.org/staff>) are all listed on ASPE's website. You will find email addresses and phone numbers for just about anyone involved on the Society level.

Conventions/Symposia

Check out information on the current Convention in Philadelphia and also find registration forms. By the way, register SOON so you get the earlybird rate! Heck, bring a coworker or two and save even MORE!! <https://aspe.org/2010ConventionAndEPE>

Membership

Find out how to join ASPE, renew your membership and more - <https://aspe.org/Membership>. You can also apply for the Steele Scholarship here. We'll talk more about that later.

Members Only

There are some things on ASPE's website that are available to ASPE members only. Just login with your email and password and see what else is available to you. What? You never logged on?!?! Geez! If you have never logged on, here is what you do (and this is taken straight from the website):

INSTRUCTIONS ON HOW TO LOG INTO OUR NEW SITE

Your user name is either:

Your last name followed by your ASPE number (found on your membership card) with no spaces (i.e., smith12345)

The e-mail address we currently have on file for you

Your password is:

Your chapter code in capital letters (found on your membership card) followed by your membership number (i.e., CH12345)

It's easy! Give it a try.

ASPE MEMBERS E-mail: Password: Log in

Chicago Chapter Website

The Chicago Chapter also has a website – www.aspe.org/Chicago (you MUST capitalize the 'C'). If you've never been on our Chapter website, please check it out. We have newsletters, directory sections and much more available here. We are also working on something new to help you keep us updated when you move, change email, etc. We'll let you know when it's ready.

MEMBERSHIP

You have been reading about what ASPE membership gets you – *PEDH*, *PS&D*, etc. Membership also gets you discounts on ASPE merchandise, Convention/ Symposium registration and more. Honestly, you DO get a lot for your money. If you are reading this and are NOT an ASPE member, please go to <https://aspe.org/Membership> and apply today!



Membership Classifications

These are taken straight from the membership application which means they are directly out of ASPE's bylaws:

Full Member: Eight (8) years of experience in plumbing engineering or related engineering field, a minimum of four (4) years of which must have been in a position of responsibility for the design of plumbing systems or in a position of responsibility for the design of systems and components related to, or incorporated within, plumbing engineered and designed systems. A maximum of four (4) years of experience may be waived by the Society Membership Committee for: (a) Education: one-half (1/2) year for each completed year in a curriculum related to plumbing engineering; (b) Engineering Registration: four (4) years for Professional Engineer registration in a field that includes plumbing engineering; (c) CIPE certification: two (2) years. Dues: \$185.

Associate Member: Professionals engaged in plumbing design as consultants or engineers with fewer than eight years of industry experience. Dues: \$165.

Affiliate Member: Any individual involved in the production or marketing of plumbing products. Dues: \$185.

Special Member: Professionals in related fields, such as contractors, or those with a special interest in plumbing design whose professional background do not match the requirements for any of the other categories may apply for Special membership. Dues: \$185.

Governmental Member: Anyone employed by municipal, state, or federal governments for one of the following reasons:

Checking and/or inspection of plumbing plans and installations;

The formulation of codes, rules, requirements and regulations pertaining to the planning, designing and installation of plumbing systems, or any portion of a plumbing system;

Research and development of plumbing systems design criteria. Exception: Persons employed by a government agency for the purpose of designing and/or specifying plumbing systems, who shall be eligible to be Full or Associate members, provided they have fulfilled the experience required as outlined for each respective classification. Dues: \$185.

Student Member: Any individual attending a recognized University or college full time (12 credit hours per term minimum) in a curriculum related to plumbing design. Dues: \$25.

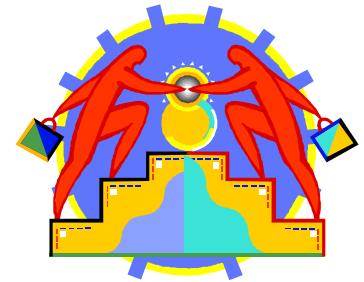


MEMBERSHIP (continued)

There is also a **Retired Member** classification that is about the same cost as a Student Membership and is for those who want to remain part of ASPE but are no longer active in the industry.

ASPE Chicago has a couple special membership promotions that you should know about:

Student Members – ASPE Chicago believes that our current engineering students will be our next plumbing engineers and we should encourage that. So, for the past several years, ASPE Chicago has offered to pay the first year's dues for our Student members. It's true! And last year, we started to also pay for renewals for any students who wanted to maintain their membership! This is an affordable way to help encourage our student members to become active in the plumbing engineering industry.



Member Bring a Member – Several years ago, the MBM (just made up this acronym) program began as a way to get our current members to recruit new members. Each new member gets a coupon for a free dinner at a Chicago Chapter meeting. That has always been the case. What the MBM program does is offers a free dinner to the member who RECRUITED the new member! All we ask is that the new member be paid in full and we will get you (the recruiter) a coupon for a free dinner. Not too shabby, huh?

Chicago Chapter Life Member - Society has a Life Member program for members who have basically dedicated their professional lives to ASPE on the Society level. But, what about those who kept those efforts on the Chapter level? This is why we instituted the Chicago Chapter Life Member program. We feel that those members who have devoted countless years of membership to the Chicago Chapter should be rewarded as well. Currently, we have only one Chicago Chapter Life Member – Don Johnson. There are certainly more in the making.



AND SO MUCH MORE

There are so many benefits to being an ASPE member and so much more that Society can offer each of us that it would require SIX newsletters! Here are some highlights of other things ASPE has to offer:

Headquarters

Society headquarters is now located at 2980 S. River Road in Des Plaines. WE have a lovely building that is immediately north of where the new casino will go. Please stop by some time. ASPE's Staff will be happy to have visitors and you will leave there with the same sense of pride had by your Chapter Officers.

Certified in Plumbing Design (CPD)

The CPD Exam is offered by Society each April. A few weeks before the exam, ASPE Chicago offers a CPD Review Class to its members (and other ASPE members in good standing). We are proud to say that for an exam that has a national passing rate of 30-40%, the passing rate for ASPE members who take the Chicago Chapter review class is 60%-plus.

The CPD program was created by ASPE to recognize those plumbing engineers who, through the passing of an exam, exhibit a professional level of plumbing design and specification expertise. This is just a one sentence description. Check out ASPE's website for a more detailed description and to find out how to register - <https://aspe.org/CPDCertification>. Yes, it IS worth getting your CPD!

More Education

As an ASPE member, you should be getting emails and brochures regarding much of ASPE's educational opportunities. ASPE conducts webinars, offers online CEU's, presents seminars and more. Likewise, the Chicago Chapter offers CEU's at each technical meeting and at our Product Show seminars each April.

If you are a CPD or PE and you attend all ASPE Chicago meetings/ seminars AND attend the ASPE Conventions/ Symposia, you just might have enough CEU's right there to take care of your bi-annual renewal (24 hours for CPD and 30 hours for PE). Think about it! Membership DOES have a value!

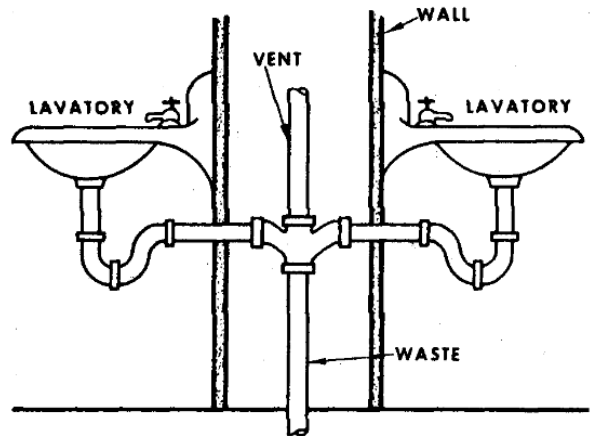
Codes, Standards and Research

The ASPE Research Foundation (ASPERF) conducts research (as you might guess) to help improve plumbing, plumbing design and plumbing engineering. When you get your membership renewal, give a thought to checking the box to donate to this excellent group. To find out more about the ASPERF, go to <https://aspe.org/AboutResearchFoundation>.



AND SO MUCH MORE (continued)

ASPE has its name on some design standards – I believe ASPE was involved in the Siphonic Roof Drainage standard. And with Society's new alliance with the International Code Council (ICC) and relationships with other organizations, you might expect ASPE's hands to be in the standards mix a little more. If you want to get involved on the Design Standards Committee or any other committee for that matter, please go to: <https://aspe.org/Committees>.



Scholarships

Each year, Society awards the Alfred Steele Engineering Scholarship (as many as five for each school year) to college students in engineering curricula. Also eligible for this scholarship are high school seniors who are committing to engineering curricula.

The Chicago Chapter has also created a scholarship along these same lines. We will be giving out as many as two (2) \$1,000 scholarships. There are still some loose ends including legal and tax questions that need to be resolved. Once they are, this will be available to ASPE Chicago members and their children. Please stay tuned as we are very excited to launch this program!

