



Chicago ASPENEWS

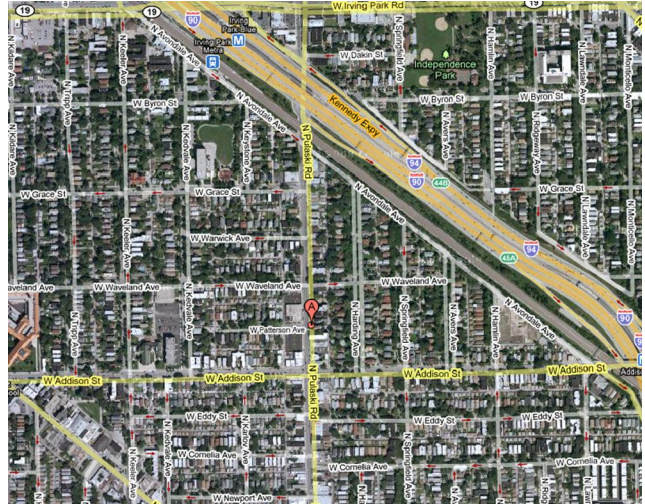


Chicago Chapter of the American Society of Plumbing Engineers
Vol. 41, No. 7 February 2010

General Meeting

Thursday February 18, 2010

LaVilla Restaurant & Banquets
3632 N Pulaski Road
Chicago, IL 60641-3019
<http://www.lavillabanquets.com/>
FREE Parking!



AGENDA

5:30pm-6:30pm
6:30pm

Cash Bar — Cocktail Hour
Dinner: Cost—\$27.00 ASPE member / \$30.00 non-member
\$25.00 ASPE member with RSVP

Menu:

Appetizers:

- Focaccia bread
- House salad with choice of dressing
- Cream of roasted red peppers soup
- Bowtie pasta with pomodoro sauce

Dinner:

- Roast loin of pork
- Chicken a-La Villa (mozzarella and mushrooms)
- Mixed vegetables
- Butter whipped mashed potatoes

Dessert:

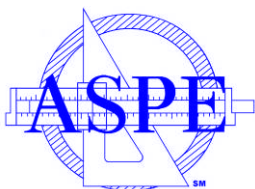
- Vanilla ice cream with chocolate strawberries and whipped cream

7:45pm

Program: **“Regional Water Supply Planning Group – Water Conservation Ordinance”** presented by Hala A. Ahmed, AICP from Chicago Metropolitan Agency for Planning (CMAP)

RSVP as soon as possible to Frank Sanchez, VP Technical!

- **Return the enclosed card for those of you getting this via US Mail**
- **Phone** 847.316.9251
- **Fax:** 847.328.4550
- **Email** Chicago.ASPE.RSVP@gmail.com



Local Chapters are not authorized to speak for the Society

PRESIDENT'S MESSAGE

I hope this month's newsletter finds you all enjoying the warmth and working on your tans. Wait, never mind – I had a brief relapse to a dream I had last night involving Hawai'i, Lady Gaga, ski jumping and somehow, ASPE. Hmm. Ga ga ooh la la. Okay, back in sunny and mild northern Illinois. How nice.



Thanks to everyone who came out to our January meeting. Frank's article will tell you some of the particulars. But, I can tell you that I learned a couple new acronyms. First, I learned that IR means infrared butt fusion. That makes me laugh. I also learned that BCF means bead and crevice free. I think that has something to do with plumbers' cracks. In all seriousness, really, thanks to everyone who came out. There was a late surge of RSVP's and we appreciate that. Folks, RSVP's are really important as they tell us how many places to set and how much food to have prepared. We are fortunate to have a couple meeting locations that are flexible and make sure everyone gets fed. However, at the same time, they could be really tough on us. The Tuesday before the meeting, we only had 10 RSVP's! Please help Frank avoid additional stress and headaches by RSVP-ing to him for the meetings you will attend – Chicago.ASPE.RSVP@gmail.com. Thanks!

As you should all know, Society (aka ASPE National) opened a new headquarters in Des Plaines. They had an Open House on January 22 with a really nice spread of food and beverage. And I must say, I felt VERY proud to call that our ASPE headquarters! They have room to move AND room to grow. Chicago Chapter member Mike Imaoka has an article later in this newsletter about the Open House. Please check it out. Another reason to be proud was the fact that SEVERAL Chicago Chapter members were in attendance. Thank you all for showing that dedication to ASPE. If you ever find yourself in Des Plaines, swing by and visit ASPE at [2980 S. River Road](http://2980.S.River.Road) (west side of the street between Devon and Touhy). They will be happy to have a visitor! Seriously, I STILL feel pride over that building. I will write more about that later.

There are some events coming up that you should know about. Lots of things going on outside of ASPE are listed in our Corresponding Secretary's, Peter Wu, article. But, I want to share some of these ASPE events and comments.

Society Board Meeting – The Society Board of Directors met from January 21-23. Included in their discussions were ASPE dues. There has been no increase in dues for the past 3 or 4 years and it is discussed every year. You will be happy to know that in light of the difficult economic times, there will be NO dues increase for 2010-2011. I will prepare you now, though, when the economy takes a significant upturn, there will probably be a small increase. Although none of us wants to pay MORE for something, let's hope this happens sooner rather than later.

Engineers Week (www.eweek.org) is February 14-20. This has been a long standing program to basically recognize and dare I say "celebrate" engineering. ASPE (Society) has put together a short presentation promoting ASPE and plumbing engineering. We are in the process of getting a copy. Please put on your thinking caps and offer us ideas for things the Chicago Chapter might be able to do to recognize Engineers Week in the coming years.

Grassroots Budget Meeting is Saturday March 13. This is basically an open discussion of ASPE's (Society) budget for the coming year. Several of your Chicago Chapter Board members and PAST Board members attend every year in hopes of being fiscally responsible and making sure Society continues to act in the best interest of our Chicago Chapter members. Rest assured, they usually do.

CHAPTER OFFICERS

PRESIDENT

Jason McDonald, CPD
Grumman/Butkus Associates
847 316.9204
jsm@grummanbutkus.com

VICE PRESIDENT TECHNICAL

Frank Sanchez, CPD
Grumman/Butkus Associates
847 316.9251
fxs@grummanbutkus.com

VICE PRESIDENT LEGISLATIVE

Rick Butler
Lochinvar
815 477.9983
rbutler@lochinvar.com

VICE PRESIDENT MEMBERSHIP

Mark Mannarelli
Environmental Systems Design
312 456.2354
mmannarelli@esdesign.com

TREASURER

Sean Allard, CPD
Environmental Systems Design
312 580.0533
sallard@esdesign.com

ADMINISTRATIVE SECRETARY

Natalia Dankanich
Grumman/Butkus Associates
847 316.9208
nkd@grummanbutkus.com

CORRESPONDING SECRETARY

Peter Wu
peterwu83@gmail.com

AFFILIATE LIAISON

Mick Bradford
Miller Sales
630 458.8816
mick@miller-sales.com

EDUCATION CHAIRMAN

Dan Fagan, PE, CPD
Cannon Design
312 960.8301
dfagan@cannondesign.com

NEWSLETTER EDITOR

Ben Rubach, PE, CPD, LEED AP
dbHMS
brubach@dbhms.com
312 915.0557 x222

WEBMASTER

Jim Moynihan
Chicago Technical Sales
630 889.7121
CTSalesInc@aol.com

GOLF OUTING CHAIRMAN

Steve Triphahn
W-T Engineering, Inc.
847 895.3640
steve.triphahn@wtengineering.com

HISTORIAN

Donald Johnson

WEBSITE

<http://www.aspe.org/Chicago>
("C" is required)

(Continued)

- **CPD (Certified in Plumbing Design)**

- ASPE's **CPD Exam** will be offered either April 16 or April 17 in the Chicagoland area. CPD candidates will be notified of the exact date and location after they register. Go here for [CPD Exam Registration](#).
- In preparation for the exam, ASPE Chicago will once again offer a **CPD Review** class. This review class will be Saturday April 3 at Grumman/Butkus' office in Evanston. This class is FREE to ASPE members in good standing. So, make sure your dues are paid!! If you are interested in taking the Review Class or have questions, just email me at jsm@grummanbutkus.com. The class will be taught by Past President David DeBord, CPD LEED AP XYZ ETC of ESD (Environmental Systems Design).
- For many of you who are already CPD's, your **CPD Recertification** deadline is April 30! If this is YOUR deadline, make sure to download the CPD Recertification Package at <https://aspe.org/sites/default/files/webfm/pdfs/CPD/CPDReCertificationPackage.pdf>. Requirements are that you fill it out completely, have at least 24 RU's (recertification units) and send ASPE a check for \$50. It is vital that you get this in on time because if you are even 1 day late, it will cost you an extra \$85! We don't want THAT now, do we?!?!?

Although Natalia will include the 50/50 Raffle information in her article, I do want to tell you that I take great pride in knowing that the raffle money collected at the last meeting is on its way toward Haiti via [The Clinton Bush Haiti Fund](#). Thanks to all who donated.

One last thing before I let you continue your journey through the February newsletter and your hunt for my OTHER article..... it is like a broken record when we say that we know times are tough. We on YOUR Chicago Chapter Board of Directors want to help. We have a couple of tools to help communicate with our Chapter members and hopefully help those who are looking for work find it.

- First, we have the **Chicago Chapter website**, www.aspe.org/Chicago, where we post a number of Chapter related items including the newsletter and the manufacturer/representative related directory sections.
- Next, we have an **ASPE Chicago Chapter Group** on www.linkedin.com. In this Group, we hope to share news about the upcoming meetings among other things. If anyone wants to start a conversation about some ASPE or plumbing engineering related topic, this is a great place to do it!
- Finally, I am keeping an **employment list** for Chicago Chapter members who are looking for work for whatever reason. I also have a list of companies we know who are hiring. So far, we have had a couple folks hiring and their information has been shared with the members on the list. We are fully aware that some people do not want others to know they are looking and that is the reason the list stays with me and only me. If you want to be added OR if your company is hiring, please drop me a line at jsm@grummanbutkus.com. Hopefully, we can all work together to get everyone working!

Hope to see you all at La Villa (I left the space, Frank) on February 18. If you are concerned about the quality and quantity of the water we drink, this will be a meeting NOT to be missed!

Jason McDonald, President
jsm@grummanbutkus.com; 847 316.9204

TECHNICAL REPORT



JANUARY MEETING RECAP

Previous Technical Meeting: "Reverse Osmosis (RO) and Deionized (DI) Water Applications" presented by Paul Galvin of Georg Fischer"

We were fortunate that Mr. Galvin decided to leave sunny Puerto Rico and come to the sub zero temperatures of our beloved city to present this seminar. The presentation briefly reviewed the process of water purification and some of the many applications. Also, he provided us some insight on the different types of materials available.

One of the best pieces of advice he gave us was the segmentation of the systems to facilitate testing. Also, we should confirm that these systems are tested according to our specifications. Let's not forget that good drawings, details and strong specifications are not enough, we need to also pay close attention to the shop submittal review to make sure the systems are installed per our original intentions. We all have heard horror stories that could have been easily prevented by checking shop drawings and confirming that the appropriate tests were done.

Meeting Costs and the Importance of RSVP

Did you notice that last month's meeting was only \$20? Not only did we take advantage of a special price, but also ASPE Chicago subsidizes a portion of the dinner cost. This is thanks to your memberships and the support from our affiliate members. Therefore, please take advantage of this opportunity; come to the meeting and please don't forget to RSVP. Reservations are very important so I can have an accurate head count and this will allow us to stick to the proposed schedule.

Last meeting I only received 40 RSVPs and 74 of you showed up. This puts a toll on all of us because it means that they have to set up more seats and prepare more food. Can you imagine if you throw a party and you get 34 more guests than what you anticipated? All you have to do is click on the email address below and hit send; that's it. This email is used only for RSVPs. **Email: Chicago.ASPE.RSVP@gmail.com**. Therefore, as an incentive to all of you who RSVP, we will continue having the free dinner raffles and we will give you a **discount!** See the front of this newsletter for details.

Our slogan has been "Support those who support you", so please keep our affiliate members in mind on your projects and if you have any questions I am sure they will be there to assist.

February Primer: "None, nada!!"

That is correct! I am eliminating a few primer sessions. The primer sessions do not carry CEUs because they are only 30 minutes long. This will allow you to socialize and interact with other engineers and manufacturers' representatives prior to our main presentation.

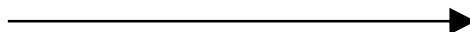
What do you think?

February Technical Program:

***Water Conservation Ordinance presented by Hala A. Ahmed,
AICP from Chicago Metropolitan Agency for Planning (CMAP)***

You will notice that I moved things around a bit. I made some changes to our February topics. Please see the end of this newsletter for our updated schedule.

Hala holds a Bachelor of Science in Architecture from the University of Khartoum, Sudan and a Master of Urban and Regional Planning from Virginia Polytechnic Institute and State University. She is also a member of the American Institute of Certified Planners (AICP). Between 1994- 1996 and 2005 to 2007, Hala worked in many architectural and urban design projects that took her from Khartoum to



Dubai and Malaysia. From 1999 to 2005, Hala worked as a City Planner in Decatur, IL and as a Regional Planner for the Tri-County Regional Planning Commission in Peoria, IL. She joined the Chicago Metropolitan Agency for Planning (CMAP) in 2007 where she worked in a variety of projects including the Regional Water Supply and Demand Study (to be released February 2010), the Regional Comprehensive Plan- The GO TO 2040 Plan (to be released October 2010) and watershed/storm water management planning initiatives.

Hala will show us how the results of the Regional Water Supply and Demand Study identify the need for increased water demand management at the local level. In following its tradition of publishing model ordinances, CMAP staff embarked on a process to develop an updated Model Water Conservation Ordinance to provide assistance to communities that wish to promote water conservation initiatives. The ordinance seeks to address indoor and landscape water use in both the residential and commercial/institutional/industrial sectors. By adopting the requirements of the proposed ordinances, communities may achieve significant reductions in water use that may allow them to grow sustainably while deferring the need for water supply infrastructure expansion required to meet increasing demand.

Frank Sanchez, CPD; Vice President Technical
fxs@grummanbutkus.com; 847 316.9251
Reduce, reuse, recycle... Rethink.

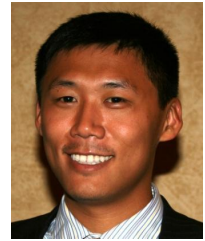
JANUARY 2010 MEETING ATTENDANCE

The following list of individuals attended the January 2010 meeting of the ASPE Chicago Chapter. In accordance with ASPE Society policy, these individuals are entitled to 0.75 RU's towards the required 24 RU's needed every two years to maintain CPD registration. Meeting attendance is also recognized by the Illinois Department of Professional Regulation to count as 1 PDH towards the required 30 PDH's needed every two years to renew Professional Engineering licenses.

Herb Hymen	Ralph Dantino	Bryan Fonseca	Frank Sanchez
Phil Blazic	E. J. Kedzie	Reid Goodrich	Bob Jackson
Rick Butler	Chris Sbarbaro	Chris Sopiarz	Phill Kroll
Mark Mannarelli	Mike Jordan	Steve Calehn	Michael Cwanek
Sean Allard	Keith Seier	Jim Greenway	Jon Triphahn
Natalia Dankanich	Greg Luczak	Tom Brown	Gabriel Gomez
Val Kurdaliev	Dave Wick	Kent Swanson	Sarah Mahlik
Dennis Richards	Craig Shannon	Art Schug	Brandon Taylor
Otton Finiewicz	Dee Vargas	Ed Lichner	Tom Babcock
Mick Bradford	Andy Dailey	Dan Courtney	<u>Frankly</u> Loulette
David DeBord	Bob Turk	Tom Higgins II	Michael Whiteside
Daniel I. Patt	Ken Cutler	Sandy DiRaddo	Paul Lacurrciere
Jason McDonald	Joe Ficek	Zoya Oberfeld	Jason Gremchuk
Peter Wu	Felipe Aravjo	Mike Belczak	Brian Hank
Bob Dahlmann	Mike Ponx	Jim Feeney	Joel Pedigo
Jeremy Cantor	Brian Carlos	Mike Castellano	Mel Withrow
Chris Wisinski	Angel Medina	David Lehman	
Nevo Martelli	Jeff Cochran	Paul Galvin	

This printing constitutes our record of who was in attendance. We apologize for any misspelling of names and ask that for future sign-ins, please print legibly. Thank You!

EVENTS



U.S. Green Building Council, www.usgbc-chicago.org

- **LEED for 2030 - Moving LEED Forward**

An afternoon workshop discussing ways that building objectives will evolve in the next 20 years, and advances in 'Smart Home' technology: The goals for Architecture 2030 are very ambitious. The U.S. Green Building Council and the LEED certification program have contributed greatly towards the achievement of the 2030 goals; however, the rating system will need to evolve in some significant ways in order for a LEED building to achieve the goals of 2030. Let's start looking forward to the next versions of LEED and how we can move building science to a more sophisticated level.

Feb. 4th 5:30 – 8:00 PM at the Haworth Showroom in the Merchandise Mart. Price is \$10 for USGBC members, \$15 for non-members. Register online at www.usgbc-chicago.org

- **LEED Core Concepts & Strategies Workshop**

An all-day workshop that will provide a solid introduction to the LEED process for anyone interested in pursuing GBCI's LEED Green Associate credential. Details as follows: The workshop provides essential knowledge of sustainable building concepts that are fundamental to all LEED Rating Systems. It begins with an introduction to the benefits and integrative approach to green building, and a brief background on the U.S. Green Building Council and LEED, including basics of the building certification process. The core of the workshop presents LEED intents and concepts at the credit category level - across building types and rating systems - touching on strategies, synergies, and specific examples that are reinforced by real project cases. Key LEED metrics and LEED referenced standards are addressed throughout the workshop. Interactive activities within the course keep you engaged and reinforce what you've learned.

Feb. 25th 8:00 AM to 5:00 PM at the Merchandise Mart in Chicago. Price is \$325 for USGBC members, \$390 for non-members before Feb. 18th. Register at <https://www.usgbc.org/CourseCatalog/coursedetail.aspx?ID=90000040>

ASHRAE www.illinoisashrae.org

- WE HAVE TICKETS TO WATCH THE BULLS STAMPEDE NEW YORK... Let's take the night off! And cheer for the Bulls. Bring clients, family or friends. A good time will be had by all! We want to invite you to join us for pizza, beer and a Chicago Bulls game. The Illinois Chapter has reserved a block of tickets to see the Chicago Bulls play the New York Knicks on Tuesday, Feb. 16th. Before the game, meet us at Moretti's Restaurant, 1645 W. Jackson (Between Ashland Ave. & Paulina St.). From 5:00 to 7 p.m., enjoy a pizza and pasta buffet before the game. Price is \$65 per ticket. Register at www.illinoisashrae.org

Society of Fire Protection Engineers—SFPE, www.chicagosfpe.org

- The 10th annual IFPA-SFPE fire protection product show will be held at the White Eagle Banquets and Restaurant in Niles Illinois on Tuesday, March 9th from 4pm-8pm. There will also be two hour-long seminars offering CEU's beginning at 3:15pm. Show admission is free. Buffet dinner from 6pm-8pm for \$30.00. For more information contact Harold Miller at 630-458-8816 or Harold@miller-sales.com. You must RSVP for the seminars.

Peter Wu, Corresponding Secretary
peterwu83@gmail.com

Hello again from your friendly V.P Membership!



I would like to WELCOME four (4) new members to the Chicago Chapter:

- Mr. Justin Sartler with Teng and Associates
- Mr. James Onohan with Tyco Thermal
- Mr. Tom Lang with Mifab
- Mickey Singh with HPS Pumps Sales & Service

Please welcome them into our FAMILY! After all, Chicago is the leading Chapter in the ASPE organization with 366 active members. The Boston chapter is second with 328 followed by Los Angeles with 232 and Philadelphia with 227 members. Remember When you see a person you do not know at a monthly meeting introduce yourself, say hello and let them feel welcome with the Chicago Chapter.

I thought this article might be of interest to a few

Every now and then we stumble across something that really puts what we do into perspective. That happened recently when we read the Pacific institute's "Water Conflict Chronology" Report. This report, which began in 1980 to better understand the connection between water resources, systems, and international security and conflict, details nearly every conflict involving water dating back to 3000 B.C. The results are staggering. Looking at a study like this underscores how important it is that we value the water we have and work to ensure everyone around the world has access to the same vital resources we do. Something most of us take for granted each day is the same thing that has the potential to cause major conflicts around the world.

As we look at this study we should all be sure to think about the impact the next time we turn on the faucet, shower, or hose and realize how lucky we are and how valuable our water is.

Excerpt from wateruseitwisely.com
Tuesday, December 15th, 2009

If any one that you know needs help with their dues renewal ASPE National has a "**compassion waiver**," program, which allows a member to maintain their membership over a three-month period and at the end of the third month they can renew at a discounted rate. If you are in this situation please let us help you in these rough times. This is what we (CHICAGO) are about, HELPING EACHOTHER!

Mark Mannarelli, Vice President Membership
mmannarelli@esdesign.com; 312.456.2354



ADMINISTRATIVE SECRETARY UPDATE

We just had our first meeting of a new decade. I hope this new decade will be good for all of us, for the whole industry in general. I believe, there are many interesting things lined up ahead of us this year, just keep reading our newsletter for the latest updates.

As usual, I would like to introduce winners of last meeting. Michael Whiteside of MIFAB won a free dinner, and Mark Manarelli, of ESD, was the 50/50 raffle winner. We decided to dedicate our 50/50 raffle to support an effort of many nations in helping Haitians in their recovery after the devastating quake. Our members' response was overwhelming. We collected over four hundred dollars. Mark donated \$100.00 of his winnings back. Congratulations guys, and thank you, Mark for your generosity.

Stay warm everyone, and I'll see you in February at LaVilla.

Natalia Dankanich, Administrative Secretary
nkd@grummanbutkus.com; 847 316.9208

AFFILIATES

The Product Show will be here before you know it. We are looking for ways to make it the most beneficial for ALL participants. If you have any suggestions/comments on the Product Show, look for the dates for the Product Show committee meetings and join us or drop me an e-mail. I'll be happy to bring up your ideas to the committee when we meet. We want everyone to have a successful show and are exploring ways to provide maximum benefits to EVERYONE!



Mick Bradford, Affiliate Liaison

mick@miller-sales.com; 630 688.2635



IAPMO Goes Green

IAPMO (International Association of Plumbing and Mechanical Officials) has announced their Green Supplement will be ready in February. This document is a supplement to the IAPMO Uniform Codes. It does not have a “point” system, but is an actual code to obtain increased sustainability for a building.

Highlights of the new Green Supplement include the following:

- Water and energy efficiency and conservation including high efficiency fixtures and appliances, water softening equipment, cooling towers and evaporative coolers
- Alternate water usage, including grey water, rainwater and recycled water
- Water heater systems, including equipment efficiency, insulation, recirculation, design of systems and controls

Energy efficiency for HVAC systems and commissioning, as well as increased indoor environmental quality.

This document will serve as a resource for code officials, engineers, contractors, and manufacturers as it relates to more sustainable plumbing designs.

For more information on this document, go to www.iapmogreen.org

The new ASPE Headquarters

I had the pleasure of attending the ASPE open house of their new headquarters. They have really grown up and this facility makes us look very professional. They also have gone a little “Green” too. According to Julius Ballanco, Society President, all their Board documents are paperless. The Board manual is over 350 pages long; that saves a lot of paper!

Rick Butler, Vice President Legislative

rbutler@lochivar.com; 815 477.9983

ASPE NEW HEADQUARTERS OPEN HOUSE

On Friday January 22, 2010, the American Society of Plumbing Engineers debuted their new headquarters. President Julius Ballanco, his wife and the staff of the Society were there to greet all members and supporters who arrived to tour the new building. Snacks and beverages were provided for all who arrived. The building is two stories tall with a new HVAC system installed for increased efficiency and accuracy of building loads. The building is just minutes away from O'Hare international airport which makes any regional or national conference or seminar quite easy to attend.

The best part is that there is plenty of room to grow. There are plenty of cubicles and offices waiting to be used. I expect these to be occupied as ASPE duties grow and the need for more staff will be necessary. Also, the possibility of renting out offices for additional income is being considered. The cubicles were included in the purchase of the building and after a good cleaning and reassembly, it was revealed that the once very dirty cubicles were practically brand new. As a member, I am quite proud of our new headquarters.

Michael A. Imaoka, Chicago Chapter Member
michael_imaoka_2@hotmail.com; 630 234.8958

ASPE Chicago Supports Haiti Earthquake Victims

On January 12, a magnitude 7.0 earthquake struck Haiti just outside the capital city of Port-au-Prince. The devastation – in lives lost, property destroyed, and families displaced – is immense. It is estimated that millions will be affected and reconstruction, when the time comes, will take years.



You probably heard on the news that Haiti is the poorest country in the western hemisphere. But what does it mean? Besides having a 70% unemployment rate in a country where the average person makes \$200 a year, they don't have the basic infrastructure we are used to, like roads, electricity and telecommunications. More importantly, they also lack access to healthcare, potable water and plumbing facilities. These people don't know or care about the latest electronic gadgets or who is going to be the new host of the late night TV show, their main concern is survival.

A few months back I read an article that was shocking; it described their level of poverty to a level I never imagined. In a nutshell, Haitians are so poor that they rely on cookies made of salt, vegetable shortening and dirt as their main ingredient. It was gut-wrenching to realize they have to rely on "dirt cookies" to cheat hunger. See <http://tiny.cc/Haitidirtcookies>. This just puts things into perspective, it gives us a glance of what these people may be going through right now, they had nothing and now they are in extreme need.

I am so proud of ASPE Chicago Chapter and the decision it made to donate the 50/50 raffle to assist our brothers and sisters in Haiti. During our last meeting we collected over \$300!! This money was promptly given to the Clinton Bush Haiti Fund.

Well done ladies and gentlemen!

For more information, please go to

Clinton Bush Haiti Fund
<http://clintonbushhaitifund.org/>

"The critical needs in Haiti are great, but they are also simple: food, water, shelter, and first-aid supplies. The best way concerned citizens can help is to donate funds that will go directly to supplying these material needs."

Frank Sanchez, CPD; Vice President Technical
fxs@grummanbutkus.com; 847 316.9251
Reduce, reuse, recycle... Rethink.



WHY I DO WHAT I DO

So, a lot of people have asked me, “Jason, why do you do what you do?” So, I tell them.... Okay, I don’t tell them anything because in reality, no one has ever asked me that. However, something happened recently that made me feel that I want to tell you guys why I DO do what I do and maybe get some of you as proud to be a Chicago Chapter member as I am. I attended the Open House for the new Society headquarters in Des Plaines. If you read Mike Imaoka’s article in this newsletter, you will notice that he said that he is “quite proud of our new headquarters”. And I am, too. I left with such a feeling of pride that it rivaled the feeling I get at ASPE Conventions. Do any of you know that feeling?

A number of you have attended Society (ASPE National) events. Whether you have attended a Convention, Symposium or something else, I wonder if you get the same feelings I do. When I attend a Society event, I get this feeling of excitement, of importance, of pride, of being a part of something really special. Corny? Yeah, maybe. But, it’s true! When I say importance, I am not talking about self-importance. I mean more like what we are doing here (ASPE) is important, that ASPE MATTERS!

What does ASPE mean to you? I am sure it varies with each person. To me, ASPE, and I am mostly talking Chicago Chapter here, is a group where people of different backgrounds can get together and have something in common to talk about. This is networking. And you know what? Through this networking, I have managed to make some really good friends over the years. Pretty cool! So, ASPE Chicago to me is a place where I can meet up with friends and drink beer, or 15’s as the case might be. But what else?

ASPE Chicago is also a place where I can learn. Sure, the technical presentations at meetings and seminars at the Product Show are wonderful sources of education and ALL offering free CEU’s. But, some of the best education the Chicago Chapter, and I am sure many other chapters, has to offer is of the non-CEU variety. The education achieved in talking with one’s colleagues, peers and others is invaluable! How many of the engineers and designers out there have taken home something learned at a meeting from the contractor or sales representative sitting next to him/her at dinner? And you can switch those roles around, too! We all can learn from each other! We can all become better designers, engineers, contractors, salespeople, manufacturers and inspectors just by attending ASPE Chicago meetings and talking with those around us.

Something else that we can do is to help each other. These remain trying times economically and I don’t know about you, but I know of a lot of our own Chicago Chapter members who are out of work. I mentioned this at the January meeting and I will repeat it here, I have NEVER felt more fortunate to have a job in my life. Honest! The Chicago Chapter Board is trying to help. If you know of a way to help or you in fact NEED help, please let us know. We promise to be discreet when necessary.

So, I have all this excitement built up from the Open House. I swear, I held my head a little higher and walked a little taller as I toured headquarters! If you were ever at the past headquarters on Catalpa, you know that it was small, cramped, cluttered AND we had to pay rent. The new headquarters is spacious, clean, professional and so much more. I am excited just writing about it! This excitement I speak of, I will try to explain it. And you know, maybe this is just a sickness that comes with being a Chapter Officer. When one gets on the Board, he/she starts thinking differently. We already know that the Chicago Chapter is the largest chapter in ASPE. But, what can we do to help it remain the BEST? What can get us more members? What can we do to give back to our members? Honestly, it gets kind of annoying sometimes thinking like that; but, it goes with the territory. Ha! If you care about the Chicago Chapter and want to feel some of this same excitement, run for a Board position. Get on a committee. Be a Delegate to the Convention! If ANY of these things entice you, let us know.

It's not ALWAYS fun and game though. Sometimes at meetings, I yell for people to sit down or shut up or whatever. Believe me, there is no disrespect being shown. Like the rest of the Board, I want meetings to move smoothly and to actually get you home at a reasonable time. Sure, sometimes we are not in as much control of a situation as we would like to be – say, like the January meeting dinner. Aside from that, we also find it important to give respect to our presenter who has volunteered time in his/her busy schedule to be with us and to try to teach us a thing or two.

Why do I push “charity”? I push charity because I am grateful for what I have and what WE have as a Chapter. I hope you are, too. We are truly blessed to be in the Chicago Chapter. If you have ever attended a society event, you may have seen the disparity in the chapters. There are definitely haves and have-nots. We are quite fortunate to be in the “HAVE” category. I will talk more about that in a second. We are talking about charity right now. As a Chapter that can afford to service its membership, it is also nice to be able to share with others who need it. Some of these organizations include Toys for Tots, Make A Wish Foundation, Leukemia Research Foundation (Ride to the Rock) among others. We even were lucky enough to be able to help out Haiti in our last 50/50 raffle. This charity not only helps others, it also keeps the name “American Society of Plumbing Engineers” out there and in a positive light. Good publicity is good publicity.

So, I talk about us being a “HAVE”. Sure, we have our members to thank for that. We ALSO have to pass a lot of our thanks on to our Affiliate members (manufacturers, their representatives, etc.). These folks get asked for money by the Chapter quite a bit. Mainly, we ask them to help support Booster Night, the Chicago Chapter holiday party, and their sponsorships help us have a really nice dinner (at a really nice price) AND special entertainment. More importantly, we ask them to support our Product Show each April. The Product Show is the ONE fundraiser for the year. A poorly exhibited Product Show could mean that we don't send members to the Symposium or don't send a full slate of Delegates to the Convention. Likewise, without the support of our Affiliates, we might have to actually PAY for our education. Folks, a LOT of chapters have to charge for seminars. With all of that just said, THIS is why I so often give accolades to our Affiliates and why the Board suggests you “support those who support you.” One way you can support them is to specify or purchase their products. Another way to support them (AND the Chicago Chapter) is to attend the Product Show. We have a WONDERFUL and VERY professional show and for that I am quite proud. Cost of the Product Show seminars and exhibition – ZERO!

What do I think about being President again? Well, I honestly did not envision myself being back on the Board after my last stint. I was enjoying my new life as Joe Member working on things like the Chapter database, the CPD Review, the newsletter (LOVED being Newsletter Editor) and other special ASPE Chicago projects. However, there was a need for someone to step up and I volunteered. Why? Because I love the Chicago Chapter. And now that I am here, I am really glad to be back. I like having the opportunity to once again lead the most awesome Chapter in Society AND I LOVE (sorry Nevo) being back on the microphone at meetings!! Ha!! I DO honestly love the Chicago Chapter and care about our members. Yeah, really. I think I heard something before, maybe even in a movie, about the US Marines and God, Family, Corps and Country. As far as ASPE goes, my loyalty lies with the Chicago Chapter members, then Region 5 (our region) and then Society. I can honestly say that I am here to serve you as are the other Chapter Officers. If you have ideas, requests, complaints or whatever, PLEASE share them. We serve YOU! And we do it WILLINGLY! We will do everything in our power to make the Chicago Chapter remain the best. And keeping the Chicago Chapter being the best is why I do what I do.

Jason McDonald, President

jsm@grummanbutkus.com; 847 316.9204

2009-2010 ASPE Chicago Meeting Schedule

Date	Primer	Technical	Location
September 17, 2009	ASPE Society Update : Tim Smith, Metro Design.	CSI MasterFormat: Presented by Randall Chappel, Associate Principal at Goettsch Partners	Costa's 340 South Halsted Street Free Valet Parking
October 15, 2009	BIM Overview - 3D Coordi- nation Walkthrough - CAD- WORKS	New LEED Green Building Rating System - David E. Debord, Envi- ronmental Systems Design	La Villa 3638 North Pu- laski Free Parking
October 23-25, 2009	ASPE Technical Symposium		Dearborn, MI
November 19, 2009	Seismic Restraints, Hangers and Supports by Tolco	Commissioning for Plumbing Systems - John Villani, Grum- man/Butkus Associates	The Parthenon 314 S. Hal- sted - Free Valet Parking
December 17, 2009	Booster Night Special Entertainment		La Villa Restaurant & Piz- zeria
January 21, 2010	"Reverse Osmosis (RO) and Deionized (DI) Water Ap- plications" presented by Paul Galvin of Georg Fisher		The Parthenon 314 S. Hal- sted - Free Valet Parking
February 18, 2010 UPDATED!	"Regional Water Supply Planning Group Water Con- servation Ordinance" presented by Hala A. Ahmed, AICP from Chicago Metropolitan Agency for Plan- ning (CMAP)		La Villa Restaurant & Pizzeria
March 18, 2010	Piping Identification	Legionella Control Systems by Steve Schira of Liquitech	La Villa Restaurant & Piz- zeria
April 15, 2010	39th Annual ASPE Chicago Product Show and Semi- nars		White Eagle - 6839 N Mil- waukee Ave, Niles, IL 60714
May 20, 2010	Fire Protection Basics: Occupancies, Definitions and Basic Layout		Alternate Venue or La Villa
June 18, 2010	Annual Golf Outing		Hilldale Golf Club 1625 Ardwick Drive Hoffman Estates
July 17, 2010	5 th Annual Kenneth G. Wentink Memorial Ride to the Rock		Glen Ellyn, IL to Starved Rock State Park